

臺灣蝶類誌
BUTTERFLY FAUNA OF TAIWAN
第五卷
VOL. V

臺灣蝶類誌
BUTTERFLY FAUNA
OF
TAIWAN

蛺蝶科
NYMPHALIDAE
第五卷 圖版篇
Vol. V PLATES

蛺蝶科 圖版篇
NYMPHALIDAE PLATES

徐堉峰、梁家源、
黃智偉、沈宗諭

行政院農業委員會林務局

徐堉峰 梁家源 黃智偉 沈宗諭

YU-FENG HSU JIA-YUAN LIANG CHIH-WEI HUANG ZONG-YU SHEN



行政院農業委員會林務局
FORESTRY BUREAU C.O.A

臺灣蝶類誌

— ◆ —
BUTTERFLY FAUNA
OF
TAIWAN

作者

徐堉峰

梁家源

黃智偉

沈宗諭



行政院農業委員會林務局

臺灣蝶類誌

—◆—
BUTTERFLY FAUNA
OF
TAIWAN

蛺蝶科

NYMPHALIDAE

—◆—
第五卷 圖版篇
Vol. V PLATE

YU-FENG HSU

JIA-YUAN LIANG

CHIH-WEI HUANG

ZONG-YU SHEN



COUNCIL OF AGRICULTURE EXECUTIVE YUAN
FORESTRY BUREAU

COLOUR PLATES

Note. Scale bars represent 1 cm.

 : Uppersides

 : Undersides

1. *Libythea lepita formosana* Fruhstorfer, 1909 東方喙蝶
♂. TAIPEI CITY, Shilin, Pingding Ancient Canal, 11. III. 2014, reared from *Celtis sinensis*, emgd. 21. III. 2014, HSU 14C14 (Y. M. Hsu).
2. *Libythea lepita formosana* Fruhstorfer, 1909 東方喙蝶
♀. TAIPEI CITY, Beitou, Taipei Veterans General Hospital, 14. III. 2010, reared from *Celtis* sp., emgd. 24. III. 2010 (H. C. Huang).
3. *Danaus plexippus* (Linnaeus, 1758) 帝王斑蝶
♂. USA: TX: Harris Co., Houston, IV. 2007 (H. H. Chuah).
4. *Danaus plexippus* (Linnaeus, 1758) 帝王斑蝶
♀. USA: TX: Harris Co., Houston, IV. 2007 (H. H. Chuah).
5. *Danaus genutia* (Cramer, [1779]) 虎斑蝶
♂. XINBEI CITY [= TAIPEI Co.], Ruifang, Nanya, 11. IX. 1998 (Y. T. Lo).



1 ♂



1 ♀



2 ♂



2 ♀



3 ♂



3 ♀



4 ♂



4 ♀



5 ♂



5 ♀



6. *Danaus genutia* (Cramer, [1779]) 虎斑蝶
♀. KAOHSIUNG CITY [= KAOHSIUNG Co.], Liugui, 23. X. 2005 (Y. F. Hsu).
7. *Danaus melanippus edmondii* (Bougainville, 1837) 白虎斑蝶
♂. TAIDONG Co., Lanyu, 24. VII. 1988 (C. S. Tseng).
8. *Danaus chrysippus* (Linnaeus, 1758) 金斑蝶
♂. TAIPEI CITY, Wenshan, Gongguan campus, NTNU, 27. V. 2005 (Y. F. Hsu).
9. *Danaus chrysippus* (Linnaeus, 1758) (f. *alcippoides*) 金斑蝶 (白化型)
♂. TAIDONG Co., Beinan, Danan, 120m, 29. VIII. 2005 (Y. F. Hsu).
10. *Danaus chrysippus* (Linnaeus, 1758) 金斑蝶
♀. TAIPEI CITY, Muzha, Taipei City Zoo, 28. V. 2009 (C. H. Lin, jr).



6✂



6✕



7✂



7✕



8✂



8✕



9✂



9✕



10✂



10✕



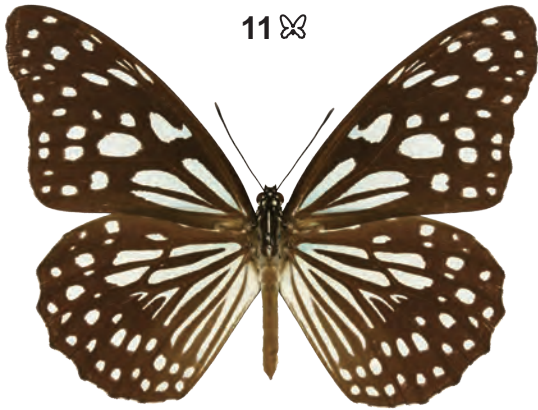
11. *Tirumala limniace limniace* (Cramer, [1775]) 淡紋青斑蝶
♂. TAIPEI CITY, Wenshan, Gongguan campus, NTNU, 5. III. 2009 (Y. F. Hsu).
12. *Tirumala limniace limniace* (Cramer, [1775]) 淡紋青斑蝶
♀. KAOHSIUNG CITY [= KAOHSIUNG Co.], Liugui, 23. X. 2005 (Y. F. Hsu).
13. *Tirumala septentrionis* (Butler, 1874) 小紋青斑蝶
♂. TAIPEI CITY, Shilin, Jiantan, 27. IX. 2018, reared from *Heterostemma brownii*, emgd. 12. X. 2018 (L. Huang).
14. *Tirumala septentrionis* (Butler, 1874) 小紋青斑蝶
♀. XINBEI CITY [= TAIPEI Co.], Wulai, 200m, 19. X. 2009 (Y. F. Hsu).



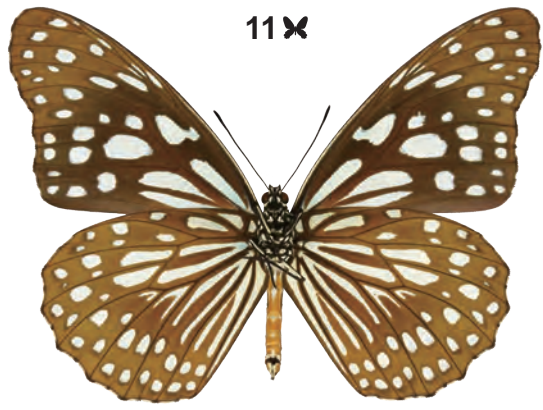
11 ♂



11 ♀



12 ♂



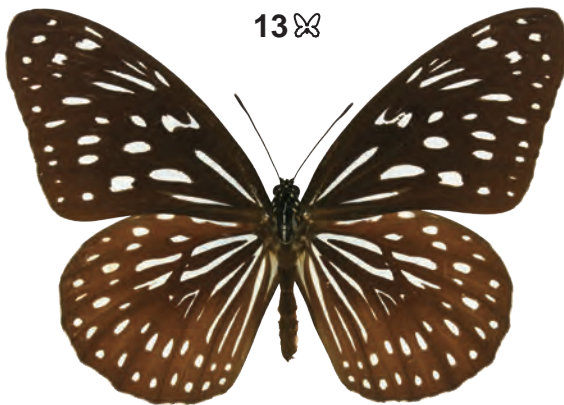
12 ♀



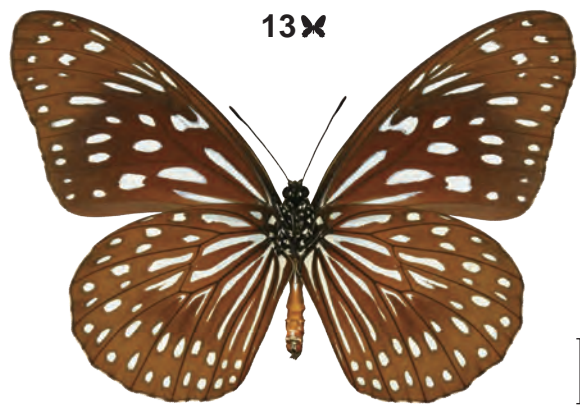
13 ♂



13 ♀



14 ♂



14 ♀



15. *Parantica aglea maghaba* (Fruhstorfer, 1909) 絹斑蝶
♂. PINGDONG Co., Shizi, Nunaishan, 26. III. 2006 (Y. F. Hsu).
16. *Parantica aglea maghaba* (Fruhstorfer, 1909) 絹斑蝶
♀. TAINAN CITY [= TAINAN Co.], Baihe, Guanziling, 300m, 24. IX. 2003 (Y. F. Hsu).
17. *Parantica aglea melanoides* Moore, 1883 絹斑蝶
♀. JINMEN Co., Lieyu, Yangshan, 9. XI. 2021 (H. C. Huang).



15 ☩



15 X



16 ☩



16 X



17 ☩



17 X



18. *Parantica swinhoei* (Moore, 1883) 斯氏絹斑蝶
♂. XINZHU Co., Zhudong, 5. XI. 2008, reared from *Tylophora ovata*, emgd. 26. XI. 2008, HSU 08L2.1(L. H. Wang & M. S. Sun).
19. *Parantica swinhoei* (Moore, 1883) 斯氏絹斑蝶
♀. XINBEI CITY, Bali, Guanyinshan, 500m, 15. IV. 2011 (Z. H. Yen).
20. *Parantica sita nipponica* (Moore, 1883) 大絹斑蝶
♂. TAIPEI CITY, Beitou, Shipai, 14. XII. 2018, reared from *Tylophora ovata*, emgd. 9. I. 2019, HSU 18M30 (H. C. Huang & L. Huang).
21. *Parantica sita nipponica* (Moore, 1883) 大絹斑蝶
♀. TAIPEI CITY, Beitou, Shipai, 14. XII. 2018, reared from *Tylophora ovata*, emgd. 2. I. 2019, HSU 18M30 (H. C. Huang & L. Huang).



18♀



18♂



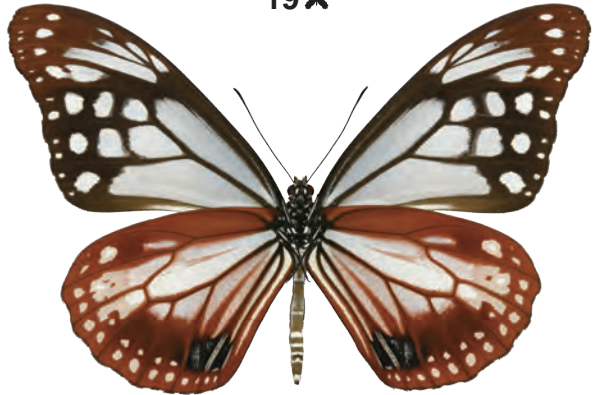
19♀



19♂



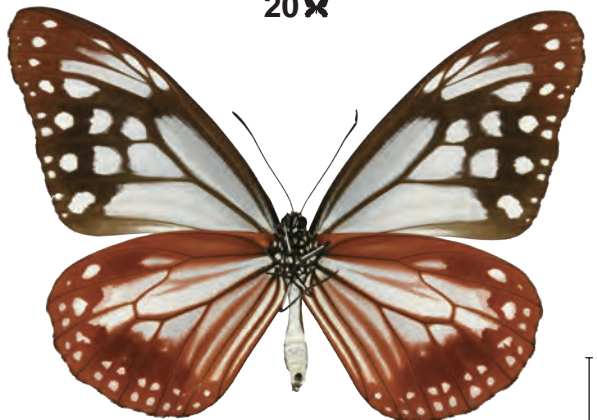
20♀



20♂



21♀



21♂



22. *Ideopsis similis* (Linneaus, 1758) 旖斑蝶
♂. XINZHU Co., Zhudong, 5. XI. 2008, reared from *Tylophora ovata*, emgd. 24. XI. 2008, HSU 08L2 (L. H. Wang & M. H. Sun).
23. *Ideopsis similis* (Linneaus, 1758) 旖斑蝶
♀. TAOYUAN CITY [= TAOYUAN Co.], Fuxing, Sanmin, Bianfudong, 350m, 8. IX. 2008 (Y. F. Hsu).
24. *Euploea sylvester swinhoi* Wallace, 1866 雙標紫斑蝶
♂. TAOYUAN CITY, Fuxing, Northern Cross-Island Highway, 48K, 3. V. 2017, reared from *Gymnema sylvestre*, emgd. 23. V. 2017, HSU 17E09 (C. W. Huang & Y. M. Hsu).
25. *Euploea sylvester swinhoi* Wallace, 1866 雙標紫斑蝶
♀. XINZHU Co., Xinfeng, Niuguling, 100m, 5. VI. 2010 (Y. F. Hsu & H. C. Huang).



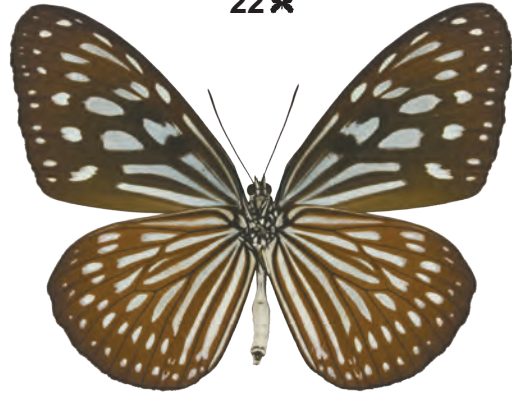
22 ✂



22 ✂



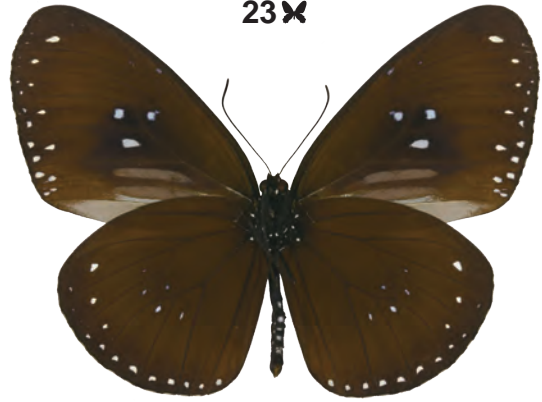
23 ✂



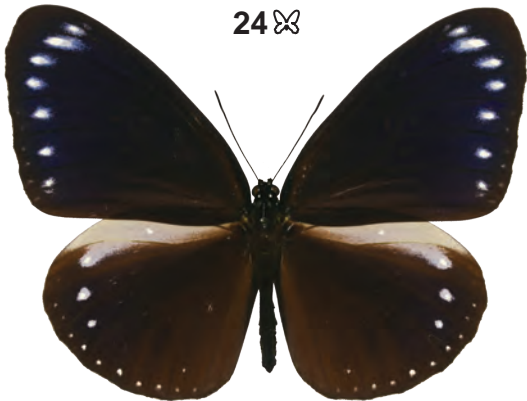
23 ✂



24 ✂



24 ✂



25 ✂



25 ✂



26. *Euploea midamus* (Linnaeus, 1758) 藍點紫斑蝶
♂. JINMEN Co., Jinsha, Wuhushan, 6. VIII. 2001, reared from *Strophanthus divaricatus*, emgd. 5. VIII. 2001 (Y. T. Lo).
27. *Euploea midamus* (Linnaeus, 1758) 藍點紫斑蝶
♀. JINMEN Co., Jinsha, Wuhushan, 6. VIII. 2001, reared from *Strophanthus divaricatus*, emgd. 28. VIII. 2001 (Y. T. Lo).
28. *Euploea mulciber barsine* Fruhstorfer, 1904 異紋紫斑蝶
♂. TAIPEI CITY, Wenshan, Muzha, Taipei City Zoo, 25. IV. 2010, reared from *Ficus microcarpa*, emgd. 22. V. 2010, HSU 10D23 (Y. F. Hsu).
29. *Euploea mulciber barsine* Fruhstorfer, 1904 異紋紫斑蝶
♀. TAIDONG Co., Yanping, Hongye, 700m, 25/26. VI. 2012 (Y. T. Lo).



26 ♀



26 ♂



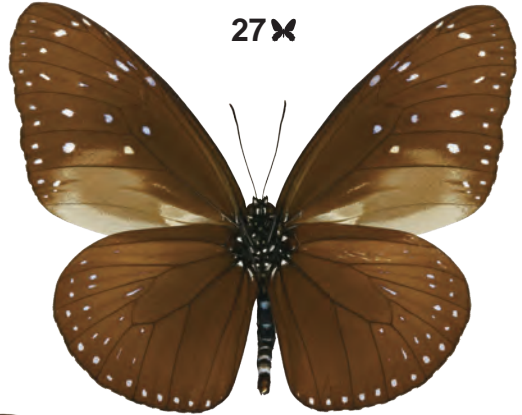
27 ♀



27 ♂



28 ♀



28 ♂



29 ♀



29 ♂



30. *Euploea phaenareta juvia* Fruhstorfer, 1908 大紫斑蝶
♂. TAIDONG Co., Lanyu, IV. 1960 (S. Araki).
31. *Euploea phaenareta juvia* Fruhstorfer, 1908 大紫斑蝶
♀. PINGDONG Co., Hengchun, VII. 1955 (S. Araki).
32. *Euploea eunice hobsoni* (Butler, 1877) 圓翅紫斑蝶
♂. XINBEI CITY, Wulai, 200m, 4. IV. 2012, reared from *Ficus microcarpa*,
emgd. 24. IV. 2012, HSU 12D1 (Y. F. Hsu).



30 ♂



30 ♀



31 ♂



31 ♀



32 ♂



32 ♀

33. *Euploea eunice hobsoni* (Butler, 1877) 圓翅紫斑蝶
♀. XINBEI CITY, Xindian, Feicui Dam, 11. IV. 2012, reared from *Ficus microcarpa*, emgd. 3. V. 2012, HSU 12D3 (Y. F. Hsu).
34. *Euploea tulliolus koxinga* Fruhstorfer, 1908 小紫斑蝶
♂. TAINAN CITY [= TAINAN Co.], Baihe, Zhentoushan, 27. VIII. 2004 (Y. F. Hsu).
35. *Euploea tulliolus koxinga* Fruhstorfer, 1908 小紫斑蝶
♀. Jiayi Co., Alishan, Shanmei, 500m, 29. IX. 2007 (Y. F. Hsu).
36. *Euploea tulliolus pollita* Erichson, 1834 小紫斑蝶 (菲律賓亞種)
♂. PHILIPPINES: CEBU PROV., Badian, Kawasan Falls, 4. XII. 2014 (C. L. Huang).



33♀



33♂



34♀



34♂



35♀



35♂



36♀



36♂



37. *Euploea core amymone* (Godart, 1819) 幻紫斑蝶
♂. KAOHSIUNG CITY, Qijin, Dongsha Is., 2/7. X. 2008, reared from *Ficus microcarpa*, emgd. 24. X. 2008, HSU 08K6 (Y. F. Hsu).
38. *Euploea core amymone* (Godart, 1819) 幻紫斑蝶
♀. KAOHSIUNG CITY, Qijin, Dongsha Is., 2/7. X. 2008, reared from *Ficus microcarpa*, emgd. 20. X. 2008, HSU 08K6 (Y. F. Hsu).
39. *Euploea camaralzeman cratis* Butler, 1866 白列紫斑蝶
♂. PENGHU Co., Xiyu, East Fort, 11. VI. 2014, reared from *Ficus microcarpa*, emgd. 14. VII. 2014, HSU 14E28 (C. W. Huang & J. Y. Liang).
40. *Euploea camaralzeman cratis* Butler, 1866 白列紫斑蝶
♀. PENGHU Co., Xiyu, East Fort, 11. VI. 2014, reared from *Ficus microcarpa*, emgd. 10. VII. 2014, HSU 14E28 (C. W. Huang & J. Y. Liang).



37 ♀



37 ♂



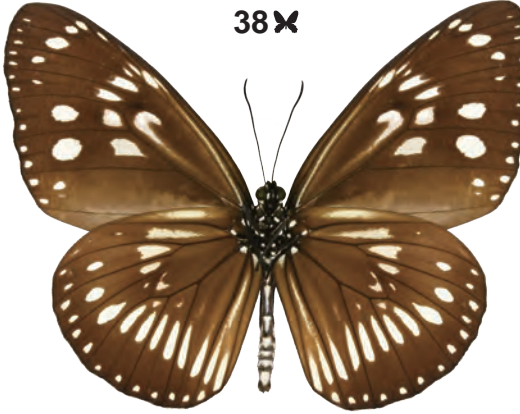
38 ♀



38 ♂



39 ♀



39 ♂



40 ♀



40 ♂



41. *Idea leuconoe clara* (Butler, 1867) 大白斑蝶
♂. JILONG CITY, Longgang Trail, 26. IX. 2006 (Y. F. Hsu).
42. *Idea leuconoe clara* (Butler, 1867) 大白斑蝶
♀. XINBEI CITY [= TAIPEI Co.], Ruifang, Nanya, 9. X. 1998 (Y. F. Hsu).
43. *Idea leuconoe kwashotoensis* (Sonan, 1928) 大白斑蝶 (綠島亞種)
♂. TAIDONG Co., Ludao, Cross Mountain Ancient Trail, 28. IV. 2014, reared from *Parsonsia alboflavescens*, HSU 14D57 (H. Y. Lee & H. C. Huang).
44. *Idea leuconoe kwashotoensis* (Sonan, 1928) 大白斑蝶 (綠島亞種)
♀. TAIDONG Co., Ludao, 8/10. IX. 2009 (C. L. Huang & Y. C. Lin).



41 ♂



41 ♀



42 ♂



42 ♀



43 ♂



43 ♀



44 ♂



44 ♀



45. *Telchinia issoria formosana* (Fruhstorfer, 1914) 苧麻細蝶
♂. TAIZHONG CITY [= TAIZHONG Co.], Heping, Shangguguan, 800/900m, 28. VII. 2007, reared from *Debregeasia orientalis*, emgd. 3. VIII. 2007, HSU 07G41 (Y. F. Hsu).
46. *Telchinia issoria formosana* (Fruhstorfer, 1914) 苧麻細蝶
♀. TAIZHONG CITY [= TAIZHONG Co.], Heping, Shangguguan, 800/900m, 28. VII. 2007, reared from *Debregeasia orientalis*, emgd. 4. VIII. 2007, HSU 07G41 (Y. F. Hsu).
47. *Telchinia issoria issoria* Hübner, [1819] 苧麻細蝶
♂. LIANJIANG Co., Nangan, Jinsha, 20. VII. 2013 (C. L. Huang, H. C. Huang & H. Y. Lee).
48. *Argynnis paphia formosicola* Matsumura, 1927 綠豹蛺蝶
♂. HUALIAN Co., Xiulin, Guanyuan, 8. IX. 2020, reared from *Viola* sp., emgd. 4. III. 2021, HSU 20J4 (Y. F. Hsu).
49. *Argynnis paphia formosicola* Matsumura, 1927 綠豹蛺蝶
♀. HUALIAN Co., Xiulin, Guanyuan, 8. IX. 2020, reared from *Viola* sp., emgd. 4. III. 2021, HSU 20J4 (Y. F. Hsu).



45 ♀



45 ♂



46 ♀



46 ♂



47 ♀



47 ♂



48 ♀



48 ♂



49 ♀



49 ♂



50. *Argynnis hyperbius* (Linnaeus, 1763) 斐豹蛺蝶
♂. NANTOU Co., Renai, Guandaoshan, 15. V. 1997 (Y. F. Hsu).
51. *Argynnis hyperbius* (Linnaeus, 1763) 斐豹蛺蝶
♀. TAIPEI CITY, Wenshan, Xianjiyan, 17. VIII. 2008, reared from *Viola inconspicua*, emgd. 7. IX. 2008, HSU 08H9 (Y. F. Hsu).
52. *Argynnis childreni* Gray, 1831 大豹蛺蝶
♂. LIANJIANG Co., Beigan, 19. XI. 2013, reared from *Viola* sp., emgd. 2/21. II. 2014, HSU 13L63 (L. H. Wang & H. Y. Lee).
53. *Argynnis childreni* Gray, 1831 大豹蛺蝶
♀. LIANJIANG Co., Beigan, 19. XI. 2013, reared from *Viola* sp., emgd. 2/21. II. 2014, HSU 13L63 (L. H. Wang & H. Y. Lee).
54. *Boloria palina yangi* Hsu & Yen, 1997 珀豹蛺蝶
♂. TAIZHONG CITY [= TAICHUNG Co.], [Heping], Lishan, 10. V. 1964. (C. T. Yang) (National Chung Hsing University, NCHU).
55. *Phalanta phalantha* (Drury, [1773]) 珙蛺蝶
♂. TAIPEI CITY, Wenshan, Gongguan campus, NTNU, 13/18. IV. 2007, reared from *Salix babylonica* [= *Salix pendulina*], emgd. 28. IV. 2007, HSU 07D16 (Y. F. Hsu).
56. *Phalanta phalantha* (Drury, [1773]) 珙蛺蝶
♀. JIAYI Co., Lantan, 24. IX. 2019, reared from *S. babylonica* [= *S. pendulina*], emgd. 3. X. 2019, HSU 19J35 (L. Huang & H. C. Huang).



50 ♂



50 ♀



51 ♂



51 ♀



52 ♂



52 ♀



53 ♂



53 ♀



54 ♂



54 ♀



55 ♂



55 ♀



56 ♂



56 ♀

57. *Cupha erymanthis* (Drury, [1773]) 黃襟蛺蝶
♂. XINBEI CITY, Xindian, Zhitan Elementary School, 6. III. 2011, reared from *Scolopia oldhamii*, emgd. 31. III. 2011, HSU 11C06 (C. L. Huang).
58. *Cupha erymanthis* (Drury, [1773]) 黃襟蛺蝶
♀. XINBEI CITY, Xindian, Zhitan Elementary School, 6. III. 2011, reared from *Scolopia oldhamii*, emgd. 31. III. 2011, HSU 11C06 (C. L. Huang).
59. *Neptis hylas luculenta* Fruhstorfer, 1907 豆環蛺蝶
♂. TAIPEI CITY, Wenshan, Gongguan campus, NTNU, 4. I. 2016, reared from *Galactia tenuiflora*, emgd. 9. II. 2016, HSU 16A09.5 (C. W. Huang).
60. *Neptis hylas luculenta* Fruhstorfer, 1907 豆環蛺蝶
♀. NANTOU Co., Renai, Jiantai Forset Trail, 1. XII. 2007, reared from *Galactia* sp., emgd. 24. XII. 2007, HSU 07M3 (C. L. Huang & J. M. Wu).
61. *Neptis hylas hylas* (Linnaeus, 1758) (WSF) 豆環蛺蝶 (高溫 / 雨季型)
♂. LIANJIANG Co., Nangan, Jinsha, 18. XI. 2013 (L. H. Wang & H. Y. Lee).
62. *Neptis hylas hylas* (Linnaeus, 1758) (DSF) 豆環蛺蝶 (低溫 / 乾季型)
♂. LIANJIANG Co., Nangan, Jinsha, 9. IV. 2014 (L. H. Wang & H. Y. Lee).
63. *Neptis hylas hylas* (Linnaeus, 1758) (WSF) 豆環蛺蝶 (高溫 / 雨季型)
♀. JINMEN Co., Jinhua, Shenshiqiao, 27/28. V. 2011 (Y. F. Hsu & H. C. Huang).



57 ♂



57 ♀



58 ♂



58 ♀



59 ♂



59 ♀



60 ♂



60 ♀



61 ♂



61 ♀



62 ♂



62 ♀



63 ♂



63 ♀



64. *Neptis sappho formosana* Fruhstorfer, 1908 小環蛺蝶
♂. TAIEPI CITY, Wenshan, Gongguan campus, NTNU, 10. V. 2010, reared from *Millettia reticulata* [= *Callerya reticulata*], emgd. 30. V. 2010, HSU 10E69 (C. L. Huang).
65. *Neptis sappho formosana* Fruhstorfer, 1908 小環蛺蝶
♀. MIAOLI Co., Taian, Xiangbi, 750m, 1. XII. 2012, reared from *Aphananthe aspera*, emgd. 23. XII. 2012, HSU 12M4 (Y. F. Hsu & S. N. Hung).
66. *Neptis soma tayalina* Murayama & Shimonoya, 1968 斷線環蛺蝶
♂. NANTOU Co., Renai, Songgang, 3. III. 2001 (Y. T. Lo).
67. *Neptis soma tayalina* Murayama & Shimonoya, 1968 斷線環蛺蝶
♀. TAOYUAN CITY, Fuxing, Xuewunao, 21. II. 2017, reared from *Zelkova serrata*, HSU 17B31.1M (Y. M. Hsu, C. J. Chang & C. W. Huang).
68. *Neptis soma ominicola* Fruhstorfer, 1908 (WSF) 斷線環蛺蝶 (高溫 / 雨季型)
♂. LIANJIANG Co., Nangan, Jinsha, 18. VI. 2014 (C. L. Huang).
69. *Neptis soma ominicola* Fruhstorfer, 1908 (DSF) 斷線環蛺蝶 (低溫 / 乾季型)
♂. LIANJIANG Co., Beigan, Wusha, 15. IV. 2014 (Y. F. Hsu, H. C. Huang & C. L. Huang).
70. *Neptis soma ominicola* Fruhstorfer, 1908 (WSF) 斷線環蛺蝶 (高溫 / 雨季型)
♀. LIANJIANG Co., Nangan, Tree Nursery, 17. VI. 2014 (C. L. Huang).



64 ✂



64 ✂



65 ✂



65 ✂



66 ✂



66 ✂



67 ✂



67 ✂



68 ✂



68 ✂



69 ✂



69 ✂



70 ✂



70 ✂



71. *Neptis nata lutatia* Fruhstorfer, 1913 細帶環蛺蝶
♂. JIAYI Co., Alishan, Danayigu, 17. II. 2020 (Y. M. Hsu).
72. *Neptis nata lutatia* Fruhstorfer, 1913 細帶環蛺蝶
♀. TAINAN CITY, Nanxi, Meiling, 29. XII. 2015, reared from *Trema orientalis*, emgd. 6. II. 2016, HSU 15M30 (C. W. Huang & T. Y. Liu).
73. *Neptis reducta* Fruhstorfer, 1908 無邊環蛺蝶
♂. NANTOU Co., Renai, Aowanda, 17. VIII. 2014, reared from *Aphananthe aspera*, emgd. 27. VIII. 2014, HSU 14H29 (W. J. Lin & J. R. Chen).
74. *Neptis reducta* Fruhstorfer, 1908 無邊環蛺蝶
♀. KAOHSIUNG CITY, Taoyuan, Meishan, 30. VI. 2016 (L. Huang).
75. *Neptis taiwana* Fruhstorfer, 1908 蓬萊環蛺蝶
♂. XINBEI CITY, Wulai, Xinxian, 23. IX. 2015, reared from *Phoebe formosana*, emgd. 16. X. 2015, HSU 15J56 (Y. M. Hsu).
76. *Neptis taiwana* Fruhstorfer, 1908 蓬萊環蛺蝶
♀. XINZHU Co., Jianshi, Lidongshan, 1500m, 3. IX. 2005 (Y. F. Hsu).
77. *Neptis noyala ikedai* Shirôzu, 1952 流紋環蛺蝶
♂. XINBEI CITY, Wulai, Hapen, 21. I. 2021, reared from *Castanopsis* sp., emgd. 24. III. 2021, HSU 21A06 (C. W. Huang, L. H. Wang & Y. F. Hsu).



71 ♂



71 ♀



72 ♂



72 ♀



73 ♂



73 ♀



74 ♂



74 ♀



75 ♂



75 ♀



76 ♂



76 ♀



77 ♂



77 ♀



78. *Neptis noyala ikedai* Shirôzu, 1952 流紋環蛺蝶
♀. TAOYUAN CITY, Fuxing, Sileng, 6. XII. 2020, reared from *Castanopsis carlesii* [= *Castanopsis cuspidata* var. *carlesii*], emgd. 18. IV. 2021 (Z. L. Chen, Y. Q. Yeh & K. Y. Chen).
79. *Neptis sankara shirakiana* Matsumura, 1929 眉紋環蛺蝶
♂. XINBEI CITY, Xindian, Sikanshui, 400m, 16. VII. 2013, reared from *Prunus campanulata*, emgd. 29. VII. 2013, HSU 13G27 (Y. F. Hsu).
80. *Neptis sankara shirakiana* Matsumura, 1929 眉紋環蛺蝶
♀. TAIDONG Co., Haiduan, Liyuan, 1800m, 2. VII. 2014 (C. W. Huang).
81. *Neptis sylvana esakii* Nomura, 1935 深山環蛺蝶
♂. YILAN Co., Datong, Siyuan, 2000m, 1. III. 2009, reared from *Quercus stenophylloides*, emgd. 2. IV. 2009, HSU 09C1 (H. Y. Lee).
82. *Neptis sylvana esakii* Nomura, 1935 深山環蛺蝶
♀. TAIDONG Co., Haiduan, Liyuan/Xiangyang, 19. VI. 2020 (C. W. Huang).
83. *Neptis hesione podarces* Nire, 1920 蓮花環蛺蝶
♂. TAIDONG Co., Yanping, Hongye, 500/600m, 26. XII. 2009, reared from *Ficus sarmentosa*, emgd. 1. III. 2010, HSU 09M17.2 (L. H. Wang & M. S. Sun).
84. *Neptis hesione podarces* Nire, 1920 蓮花環蛺蝶
♀. XINZHU Co., Jianshi, Lidongshan, 10. IX. 2014, reared from *Ficus sarmentosa*, emgd. 5. XII. 2014, HSU 14J19 (C. L. Huang & L. H. Wang).



78 ♀



78 ♂



79 ♀



79 ♂



80 ♀



80 ♂



81 ♀



81 ♂



82 ♀



82 ♂



83 ♀



83 ♂



84 ♀



84 ♂



85. *Neptis philyra splendens* Murayama, 1941 槭環蛺蝶
♂. YILAN Co., Datong, Mingchi, 31. I. 2016, reared from *Acer serrulatum*, emgd. 19. III. 2016, HSU 16A49 (C. C. Lu, jr, C. H. Lin, W. J. Lin, C. W. Huang & Y. H. Lin).
86. *Neptis philyra splendens* Murayama, 1941 槭環蛺蝶
♀. XINZHU Co., Jianshi, Lidongshan, 31. XII. 2013, reared from *Acer serrulatum*, emgd. 6. IV. 2014, HSU 13M27 (C. W. Huang, L. H. Wang & C. L. Huang).
87. *Neptis philyroides sonani* Murayama, 1941 鑲紋環蛺蝶
♂. TAIDONG Co., Haiduan, Tianlong Trail, 700m, 16. IV. 2011 (L. H. Wang).
88. *Neptis philyroides sonani* Murayama, 1941 鑲紋環蛺蝶
♀. KAOHSIUNG CITY, Taoyuan, Liguan, 5. V. 2020 (C. J. Chang, C. W. Huang, W. J. Lin & S. Y. Chen).
89. *Neptis ilos nirei* Nomura, 1935 奇環蛺蝶
♂. HUALIAN Co., Xiulin, Guanyuan, 2374m, 20. VIII. 2020, reared from *Acer rubescens*, emgd. 14. XI. 2020, HSU 20H7 (Z. L. Chen).
90. *Neptis ilos nirei* Nomura, 1935 奇環蛺蝶
♀. HUALIAN Co., Xiulin, Bilu, 2000m, 10. IX. 2020, reared from *Acer rubescens*, emgd. 24. XI. 2020, HSU 20J7 (Y. F. Hsu & Z. Y. Shen).
91. *Neptis pryleri jucundita* Fruhstorfer, 1908 黑星環蛺蝶
♂. PINGDONG Co., Wutai, Ali, 1000m, 22. V. 2011 (Y. F. Hsu).



85 ♀



85 ♂



86 ♀



86 ♂



87 ♀



87 ♂



88 ♀



88 ♂



89 ♀



89 ♂



90 ♀



90 ♂



91 ♀



91 ♂



92. *Neptis pryeri jucundita* Fruhstorfer, 1908 黑星環蛺蝶
♀. NANTOU Co., Renai, Huisun, 600/700m, 20. II. 2012 (Y. F. Hsu & H. C. Huang).
93. *Pantoporia hordonia rihodona* (Moore, 1878) 金環蛺蝶
♂. XINBEI CITY [= TAIPEI Co.], Wulai, Fushan Research Station, 700m, 4/5. VIII. 2006, reared from *Albizia julibrissin*, emgd. 7. VIII. 2006, HSU 06H14 (Y. F. Hsu & H. C. Huang).
94. *Pantoporia hordonia rihodona* (Moore, 1878) 金環蛺蝶
♀. XINBEI CITY [= TAIPEI Co.], Wulai, Fushan Research Station, 700m, 28. VIII. 2006, reared from *Acacia intsia* [= *Acacia caesia*], emgd. 15. IX. 2006, HSU 06H39 (Y. F. Hsu).
95. *Limenitis sulpitia tricola* Fruhstorfer, 1908 殘眉線蛺蝶
♂. TAIPEI CITY, Nangang, Sanchongpupi, 26. V. 2014 (Y. F. Hsu).
96. *Limenitis sulpitia tricola* Fruhstorfer, 1908 (melanized form) 殘眉線蛺蝶 (黑化型)
♂. JILONG CITY, Longgang Trail, 26. VIII. 2008 (C. K. Wang).
97. *Limenitis sulpitia tricola* Fruhstorfer, 1908 殘眉線蛺蝶
♀. XINBEI CITY [= TAIPEI Co.], Xindian, Zhitan Elementary School, 6. III. 2011, reared from *Lonicera japonica*, emgd. 1. IV. 2011, HSU 11C09.2 (C. L. Huang).
98. *Limenitis sulpitia sulpitia* (Cramer, [1779]) 殘眉線蛺蝶
♂. LIANJIANG Co., Beigan, Qinbi/Ankang, 21. VII. 2020 (Y. F. Hsu).



92 ♂



92 ♀



93 ♂



93 ♀



94 ♂



94 ♀



95 ♂



95 ♀



96 ♂



96 ♀



97 ♂



97 ♀



98 ♂



98 ♀



99. *Limenitis sulpitia sulpitia* (Cramer, [1779]) 殘眉線蛺蝶
♀. LIANJIANG Co., Nangan, Tree Nursery, 11. X. 2014 (H. Y. Lee & C. W. Huang).
100. *Limenitis asura baelia* (Fruhstorfer, 1908) 白圈線蛺蝶
♂. TAIPEI CITY, Neihu, Dalun Lake, 1. V. 2020, reared from *Ilex ficoidea*, emgd. 9. V. 2020, HSU 20E03 (Y. M. Hsu).
101. *Limenitis asura baelia* (Fruhstorfer, 1908) (melanized form) 白圈線蛺蝶 (黑化型)
♂. TAIPEI CITY, Nangang, Sanchongpupi, 26. V. 2014 (Y. F. Hsu).
102. *Limenitis asura baelia* (Fruhstorfer, 1908) 白圈線蛺蝶
♀. TAIPEI CITY, Neihu, Dalun Lake, 1. V. 2020, reared from *Ilex ficoidea*, emgd. 9. V. 2020, HSU 20E03 (Y. M. Hsu).
103. *Limenitis jina sauteri* (Fruhstorfer, 1913) 寬帶線蛺蝶
♂. XINZHU Co., Jianshi, Mamei, 1600m 13. IX. 2005, reared from *Lonicera hypoglauca*, emgd. 16. X. 2005, HSU 05J42 (C. C. Lu, L. H. Wang & H. Y. Lee).
104. *Limenitis jina sauteri* (Fruhstorfer, 1913) 寬帶線蛺蝶
♀. TAIZHONG CITY [= TAIZHONG Co.], Heping, Shangguguan, 900m, 29. VII. 2007 (Y. F. Hsu).



99 ♀



99 ♂



100 ♀



100 ♂



101 ♀



101 ♂



102 ♀



102 ♂



103 ♀



103 ♂



104 ♀



104 ♂

105. *Limenitis fortuna kodahirai* (Sonan, 1938) 幻紫線蛺蝶
♂. TAOYUAN CITY, Fuxing, Northern Cross-Island Road, 14. VI. 2021, reared from *Viburnum* sp., emgd. 20. VII. 2021, HSU 21F6 (Y. Q. Yeh).
106. *Limenitis fortuna kodahirai* (Sonan, 1938) 幻紫線蛺蝶
♀. TAOYUAN CITY, Fuxing, Northern Cross-Island Road, 14. VI. 2021, reared from *Viburnum* sp., emgd. 20. VII. 2021, HSU 21F6 (Y. Q. Yeh).
107. *Limenitis dudu jinamitra* Fruhstorfer, 1908 紫俳線蛺蝶
♂. XINBEI CITY, Wugu, Zhanshan, 3. III. 2016 (H. C. Huang).
108. *Limenitis dudu jinamitra* Fruhstorfer, 1908 紫俳線蛺蝶
♀. XINBEI CITY [= TAIPEI Co.], Wulai, Fushan, Kalamoji Trail, 500m, 7. IV. 2009, reared from *Lonicera* sp., emgd. 9. IV. 2009, HSU 09D16 (Y. F. Hsu).
109. *Athyma perius* (Linnaeus, 1758) 玄珠帶蛺蝶
♂. JIAYI Co., Fanlu, Chukou, 300m, 10. V. 2011 (Y. F. Hsu).
110. *Athyma perius* (Linnaeus, 1758) 玄珠帶蛺蝶
♀. TAIZHONG CITY, Dakeng, Trail No. 4, 18. VIII. 2018, reared from *Glochidion* sp., emgd. 5. IX. 2018 (L. Huang).



105 ✂



105 ✂



106 ✂



106 ✂



107 ✂



107 ✂



108 ✂



108 ✂



109 ✂



109 ✂



110 ✂



110 ✂

111. *Athyma selenophora laela* (Fruhstorfer, 1908) 異紋帶蛺蝶
♂. XINBEI CITY [= TAIPEI Co.], Wulai, Jiajiuliao, 150m, 21. VII. 2008 (Y. F. Hsu).
112. *Athyma selenophora laela* (Fruhstorfer, 1908) 異紋帶蛺蝶
♀. TAIPEI CITY, Beitou, Zhongzhengshan Trail, 1. IX. 2008, reared from *Wendlandia formosana*, emgd. 14. X. 2008, HSU 08H34 (N. Y. Tsai).
113. *Athyma selenophora laela* (Fruhstorfer, 1908) (melanized form) 異紋帶蛺蝶 (黑化型)
♀. XINBEI CITY [= TAIPEI Co.], Wanli, Fengguizui, 650m, 25. IX. 2010 (C. L. Huang).
114. *Athyma cama zoroastres* Butler, 1877 雙色帶蛺蝶
♂. XINBEI CITY [= TAIPEI Co.], Wulai, 9. VII. 2004, reared from *Glochidion rubra* [= *Glochidion rubrum*], emgd. 13. VIII. 2004, HSU 04G8 (J. R. Chen & C. T. Chang).
115. *Athyma cama zoroastres* Butler, 1877 (melanized form) 雙色帶蛺蝶 (黑化型)
♂. PINDONG Co., Mudan, Gaoshifoshan, 4. II. 2010, reared fom *Glochidion rubrum*, emgd. 19. II. 2010, HSU 10B10 (L. H. Wang).
116. *Athyma cama zoroastres* Butler, 1877 雙色帶蛺蝶
♀. PINDONG Co., Mudan, Gaoshifoshan, 4. II. 2010, reared fom *Glochidion rubrum*, emgd. 19. II. 2010, HSU 10B10 (L. H. Wang).



111 ♂



111 ♀



112 ♀



112 ♂



113 ♀



113 ♂



114 ♀



114 ♂



115 ♀



115 ♂



116 ♀



116 ♂



117. *Athyma opalina hirayamai* (Matsumura, 1935) 流帶蛺蝶
♂. TAOYUAN CITY [= TAOYUAN Co.], Fuxing, Sileng, 1000m, 23. IX. 2014,
emgd. 28. X. 2014, HSU 14J48 (Y. M. Hsu).
118. *Athyma opalina hirayamai* (Matsumura, 1935) 流帶蛺蝶
♀. TAOYUAN CITY [= TAOYUAN Co.], Fuxing, Sileng, 1000m, 23. IX. 2014,
emgd. 5. XI. 2014, HSU 14J48 (Y. M. Hsu).
119. *Abrota ganga formosana* Fruhstorfer, 1909 璫蛺蝶
♂. NANTOU Co., Renai, Aowanda, 5. VII. 2008 (T. W. Chen & N. Y. Tsai).
120. *Abrota ganga formosana* Fruhstorfer, 1909 璫蛺蝶
♀. HUALIAN Co., Xiulin, Bilu, 2150m, 9. VII. 2018 (Y. F. Hsu).
121. *Euthalia irrubescens fulguralis* (Matsumura, 1909) 紅玉翠蛺蝶
♂. NANTOU Co., Renai, Huisun, 4. IV. 2021, reared from *Scurrula* sp., emgd.
15. VI. 2021, HSU 21D14 (Z. L. Chen, K. Y. Chen, M. H. Wu & Y. Q. Yeh).
122. *Euthalia irrubescens fulguralis* (Matsumura, 1909) 紅玉翠蛺蝶
♀. NANTOU Co., Renai, Huisun, 4. IV. 2021, reared from *Scurrula* sp., emgd. 8.
VI. 2021, HSU 21D14 (Z. L. Chen, K. Y. Chen, M. H. Wu & Y. Q. Yeh).



117 ♂



117 ♀



118 ♂



118 ♀



119 ♂



119 ♀



120 ♂



120 ♀



121 ♂



121 ♀



122 ♂



122 ♀

123. *Euthalia phemius* (Doubleday, [1848]) 尖翅翠蛺蝶
♂. TAIPEI CITY, Wenshan, Jingmei, 24. XI. 2020, reared from *Mangifera indica*, emgd. 30. XII. 2020, HSU 20L12 (Y. F. Hsu).
124. *Euthalia phemius* (Doubleday, [1848]) 尖翅翠蛺蝶
♀. XINBEI CITY, Xindian, Guishan, 22. XII. 2020, reared from *Mangifera indica*, emgd. 1. I. 2021, HSU 20M12 (Y. F. Hsu).
125. *Euthalia kosempona* Fruhstorfer, 1908 甲仙綠蛺蝶
♂. TAOYUAN CITY, Fuxing, Xuanyuan, 27. VI. 2018 (C. W. Huang & S. Y. Chen).
126. *Euthalia kosempona* Fruhstorfer, 1908 甲仙綠蛺蝶
♀. TAIZHONG CITY, Heping, Guguan, 1000m, 17. VI. 2012 (Y. C. Lin).
127. “*Euthalia pyrrha* var. *daitoensis* Matsumura 1919”
Holotype ♀ of *Euthalia pyrrha* var. *daitoensis* Matsumura 1919 ; “臺東 [Taito/Taidong] Formosa Matsumura/*E. pyrrha daitoensis*” (Systematic Entomology Laboratory, Hokkaido University, SEHU).
128. *Euthalia malapana* Shirôzu & Chung, 1958 馬拉巴翠蛺蝶
♂. TAIZHONG CITY [= TAIZHONG Co.], Heping, Shishanxi, 21. VII. 1997 (C. Y. Hung).



123 ♀



123 ♂



124 ♀



124 ♂



125 ♀



125 ♂



126 ♀



126 ♂



127 ♀



127 ♂



128 ♀



128 ♂

129. *Euthalia malapana* Shirôzu & Chung, 1958 馬拉巴翠蛺蝶
♀. TAIZHONG CITY [= TAIZHONG Co.], Heping, Guguan, VII. 1988.
130. *Euthalia formosana* Fruhstorfer, 1908 臺灣翠蛺蝶
♂. XINBEI CITY [= TAIPEI Co.], Wulai, 30. X. 2002, reared from *Quercus glauca*, emgd. 13. III. 2003, HSU 02K80 (L. W. Wu).
131. *Euthalia formosana* Fruhstorfer, 1908 臺灣翠蛺蝶
♀. XINBEI CITY [= TAIPEI Co.], Wulai, 30. X. 2002, reared from *Quercus glauca*, emgd. 9. III. 2003, HSU 02K78 (C. L. Huang).
132. *Euthalia insulae* Hall, 1930 窄帶翠蛺蝶
♂. TAIZHONG CITY [= TAIZHONG Co.], Heping, Guguan, Bojinjiashan, emgd. 17. III. 2001 (C. C. Lu).
133. *Euthalia insulae* Hall, 1930 窄帶翠蛺蝶
♀. YILAN Co., Datong, Tuleng, 1600m, 11. VIII. 2009 (Y. F. Hsu).
134. *Dichorragia nesimachus formosanus* Fruhstorfer, 1909 流星蛺蝶
♂. JIAYI Co., Alishan, Dabang, 29. X. 2011, reared from *Meliosma rhoifolia*, emgd. 21. XI. 2011, HSU 11K35 (C. Y. Liao).



129 ♂



129 ♀



130 ♂



130 ♀



131 ♂



131 ♀



132 ♂



132 ♀



133 ♂



133 ♀



134 ♂



134 ♀



135. *Dichorragia nesimachus formosanus* Fruhstorfer, 1909 流星蛺蝶
♀. TAIPEI CITY, Neihu, Dagouxi, 30. X. 2018, emgd. 21. XI. 2018 (L. Huang).
136. *Timelaea albescens formosana* Fruhstorfer, 1908 白裳貓蛺蝶
♂. PINGDONG Co., Wutai, Old Dawu, 1000m, 14/16. II. 2000 (Y. T. Lo).
137. *Timelaea albescens formosana* Fruhstorfer, 1908 白裳貓蛺蝶
♀. PINGDONG Co., Wutai, Old Dawu, 1000m, 14/16. II. 2000 (Y. T. Lo).
138. *Chitoria chrysolora* (Fruhstorfer, 1908) 金鎧蛺蝶
♂. NANTOU Co., Renai, Huisun, 700m, 8. X. 2011 (C. S. Chung).
139. *Chitoria chrysolora* (Fruhstorfer, 1908) 金鎧蛺蝶
♀. NANTOU Co., Renai, Nanshanxi, 2. VII. 1999 (C. C. Lu).
140. *Chitoria chrysolora* (Fruhstorfer, 1908) ('Yellow form') 金鎧蛺蝶 (黃色型)
♀. PINGDONG Co., Chunri, Dahanshan, 25. XI. 2014, reared from *Celtis formosana*, emgd. 23. II. 2015, HSU 14L30 (Y. F. Hsu).
141. *Chitoria chrysolora* (Fruhstorfer, 1908) (gynandromorph) 金鎧蛺蝶 (雌雄型)
gynandrism. XINBEI CITY, Wulai, 25. I. 2018, reared from *Celtis formosana*, emgd. 20. III. 2018, HSU 18A26 (L. Huang).



135 ♂



135 ♀



136 ♂



136 ♀



137 ♂



137 ♀



138 ♂



138 ♀



139 ♂



139 ♀



140 ♂



140 ♀



141 ♂



141 ♀



142. *Chitoria ulupi arakii* Naritomi, 1959 武鎧蛺蝶
♂. XINZHU Co., Jianshi, Lidongshan, 19. IX. 2014, reared from *Celtis sinensis*,
emgd. 17. XII. 2014, HSU 14J82 (C. W. Huang, C. L. Huang & L. H. Wang).
143. *Chitoria ulupi arakii* Naritomi, 1959 武鎧蛺蝶
♀. XINZHU Co., Jianshi, Lidongshan, 19. IX. 2014, reared from *Celtis sinensis*,
emgd. 28. XII. 2014, HSU 14J82 (C. W. Huang, C. L. Huang & L. H. Wang).
144. *Helcyra plesseni* (Fruhstorfer, 1913) 普氏白蛺蝶
♂. PINGDONG Co., Wutai, 16. III. 2020, emgd. 10. IV. 2020 (K. Y. Chen).
145. *Helcyra plesseni* (Fruhstorfer, 1913) 普氏白蛺蝶
♀. TAIZHONG CITY, Heping, Guguan, Shaolai, 2. VIII. 2016 (Z. L. Chen).
146. *Helcyra superba takamukai* Matsumura, 1919 白蛺蝶
♂. NANTOU Co., Renai, Nanshanxi, 23. IV. 2014, reared from *Celtis biondii*,
emgd. 4. VI. 2014, HSU 14D34 (Y. F. Hsu).
147. *Helcyra superba takamukai* Matsumura, 1919 白蛺蝶
♀. HUALIAN Co., Xiulin, Shikongzai, 25. IV. 2008, reared from *Celtis biondii*,
emgd. 2. V. 2008, HSU 08D35 (C. K. Wang).



142 ♂



142 ♀



143 ♂



143 ♀



144 ♂



144 ♀



145 ♂



145 ♀



146 ♂



146 ♀



147 ♂



147 ♀

148. *Sephisa chandra androdamas* Fruhstorfer, 1908 燦蛺蝶
♂. TAIPEI CITY, Shilin, Wanxi Industrial Rd., Right Branch Line, 13. IV. 2020,
reared from *Quercus glauca*, emgd. 29. IV. 2020, HSU 20D01 (Y. M. Hsu).
149. *Sephisa chandra androdamas* Fruhstorfer, 1908 燦蛺蝶
♀. TAIPEI CITY, Shilin, Bixi Industrial Rd., 19. III. 2015, reared from *Quercus glauca*, emgd. 5. V. 2015, HSU 15C19 (Y. M. Hsu).
150. *Sephisa daimio* Matsumura, 1910 臺灣燦蛺蝶
♂. HUALIAN Co., Xiulin, Bilu, 30. VII. 2019 (C. W. Huang).
151. *Sephisa daimio* Matsumura, 1910 臺灣燦蛺蝶
♀. XINZHU Co., Jianshi, Yulao, 1200m, 14. II. 2006, reared from *Quercus gilva*,
emgd. 14. V. 2006, HSU 06B24 (L. H. Wang).



148 ♂



148 ♀



149 ♂



149 ♀



150 ♂



150 ♀



151 ♂



151 ♀



152. *Hestina assimilis formosana* (Moore, 1895) 紅斑脈蛺蝶
♂. TAIPEI CITY, Wenshan, Chanchushan, 7. VI. 2019 (L. Huang).
153. *Hestina assimilis formosana* (Moore, 1895) (melanized form) 紅斑脈蛺蝶 (黑化型)
♂. TAIPEI CITY, Wenshan, Muzha, Hills S. of NCCU campus, 20. III. 2009 (N. Y. Tsai).
154. *Hestina assimilis formosana* (Moore, 1895) 紅斑脈蛺蝶
♀. TAIPEI CITY, Wenshan, Chanchushan, 10. VII. 2019 (L. Huang).
155. *Hestina assimilis assimilis* (Linnaeus, 1758) 紅斑脈蛺蝶
♂. LIANJIANG Co., Beigan, Qinbi, 26. VI. 2019 (Y. Y. Lu).



152 ♂



152 ♀



153 ♂



153 ♀



154 ♂



154 ♀



155 ♂



155 ♀



156. *Hestina assimilis assimilis* (Linnaeus, 1758) 紅斑脈蛺蝶
♀. JINEMN Co., Jincheng, Shuitou, 20. XI. 2013, reared from *Celtis sinensis*,
emgd. 2. VI. 2014, HSU 13L50 (Y. F. Hsu & H. C. Huang).
157. *Sasakia charonda formosana* Shirôzu, 1963 大紫蛺蝶
♂. TAOYUAN CITY [= TAOYUAN Co.], Fuxing, Baling/ Xuanyuan, 2. VI.
1986 (Y. F. Hsu).
158. *Sasakia charonda formosana* Shirôzu, 1963 大紫蛺蝶
♀. TAOYUAN CITY, Fuxing, Xuanyuan, 600m, 7. VI. 2015, reared from *Celtis
sinensis*, emgd. 20. IX. 2015, HSU 15F6 (C. C. Lu, jr).



156 ♀



156 ♂



157 ♀



157 ♂



158 ♀



158 ♂



159. *Ariadne ariadne pallidior* (Fruhstorfer, 1899) 波蛺蝶
♂. TAINAN CITY, Xinhua, 20m, 20. XI. 2011 (Y. F. Hsu).
160. *Ariadne ariadne pallidior* (Fruhstorfer, 1899) 波蛺蝶
♀. TAINAN CITY, Xinhua, 20m, 20. XI. 2011 (Y. F. Hsu).
161. *Cyrestis thyodamas formosana* Fruhstorfer, 1898 (WSF) 網絲蛺蝶 (高溫 / 雨季型)
♂. XINBEI CITY [= TAIPEI Co.], Wulai, Fushan Research Station, 700m, 4/5. VIII. 2006 (Y. F. Hsu & H. C. Huang).
162. *Cyrestis thyodamas formosana* Fruhstorfer, 1898 (DSF) 網絲蛺蝶 (低溫 / 乾季型)
♂. TAIPEI CITY, Wenshan, Xianjiyan, 16. III. 2011, reared from *Ficus* sp., emgd. 9. IV. 2011 (C. L. Huang).
163. *Cyrestis thyodamas formosana* Fruhstorfer, 1898 ('Yellow form') 網絲蛺蝶 (黃色型)
♂. TAIPEI CITY, Neihu, Neigou, 3. I. 2009 (H. C. Huang).
164. *Cyrestis thyodamas formosana* Fruhstorfer, 1898 (WSF) 網絲蛺蝶 (高溫 / 雨季型)
♀. XINBEI CITY, Wulai, Jiajiuliao, 200m, 24. X. 2011 (Y. C. Lin).



159 ♂



159 ♀



160 ♂



160 ♀



161 ♂



161 ♀



162 ♂



162 ♀



163 ♂



163 ♀



164 ♂



164 ♀

165. *Cyrestis thyodamas formosana* Fruhstorfer, 1898 (DSF) 網絲蛺蝶 (低溫 / 乾季型)
♀. TAIPEI CITY, Wenshan, Chanchushan, 17. II. 2009, reared from *Ficus microcarpa*, emgd. 21. II. 2009, HSU 09B17 (Y. F. Hsu).
166. *Cyrestis thyodamas formosana* Fruhstorfer, 1898 ('Yellow form') 網絲蛺蝶 (黃色型)
♀. TAIPEI CITY, Shilin, Tianxiyuan, 600m, 27. VII. 2011 (H. C. Huang).
167. *Cyrestis thyodamas chinensis* Martin, 1903 網絲蛺蝶
♂. LIANJIANG Co., Beigan, Disposal Area, 20. X. 2020 (Y. F. Hsu).
168. *Cyrestis thyodamas chinensis* Martin, 1903 網絲蛺蝶 (黃色型)
♀. LIANJIANG Co., Beigna, Leishan, 22. VII. 2020 (Y. F. Hsu).
169. *Junonia almana* (Linnaeus, 1758) (WSF) 眼蛺蝶 (高溫 / 雨季型)
♂. JILONG CITY, Bisha Harbor, 9. XI. 2010 (J. H. Lin).
170. *Junonia almana* (Linnaeus, 1758) (DSF) 眼蛺蝶 (低溫 / 乾季型)
♂. TAINAN CITY, Liujia, 20m, 20. XI. 2011 (Y. F. Hsu).



165 ♂



165 ♀



166 ♂



166 ♀



167 ♂



167 ♀



168 ♂



168 ♀



169 ♂



169 ♀



170 ♂



170 ♀

171. *Junonia almana* (Linnaeus, 1758) (WSF) 眼蛺蝶 (高溫 / 雨季型)
♀. TAIPEI CITY, Wenshan, Gongguan campus, NTNU, 5. VII. 2002, reared from *Lindernia ruelloides* [= *L. ruellioides*], emgd. 2/6. VIII. 2002, HSU 02G5 (H. S. Chuen & F. Z. Lin).
172. *Junonia almana* (Linnaeus, 1758) (DSF) 眼蛺蝶 (低溫 / 乾季型)
♀. TAIPEI CITY, Wenshan, Gongguan campus, NTNU, 1. XI. 2000 (Y. F. Hsu).
173. *Junonia lemonias aenaria* (Fruhstorfer, 1912) (WSF) 鱗紋眼蛺蝶 (高溫 / 雨季型)
♂. PINGDONG Co., Checheng, Xiaojianshan, 4. IX. 2010 (Y. F. Hsu).
174. *Junonia lemonias aenaria* (Fruhstorfer, 1912) (DSF) 鱗紋眼蛺蝶 (低溫 / 乾季型)
♂. PINGDONG Co., Sandimen, 300m, 2. I. 2009 (Y. F. Hsu).
175. *Junonia lemonias aenaria* (Fruhstorfer, 1912) (WSF) 鱗紋眼蛺蝶 (高溫 / 雨季型)
♀. JIAYI Co., Alishan, Shizhuo/ Dabang, 900/1000m, 25. IX. 2010 (Y. F. Hsu).
176. *Junonia lemonias aenaria* (Fruhstorfer, 1912) (DSF) 鱗紋眼蛺蝶 (低溫 / 乾季型)
♀. TAINAN CITY, Dongshan, Kantoushan, 24. XII. 2019 (C. W. Huang & S. Y. Chen).



171 ♂



171 ♀



172 ♂



172 ♀



173 ♂



173 ♀



174 ♂



174 ♀



175 ♂



175 ♀



176 ♂



176 ♀

177. *Junonia orithya* (Linnaeus, 1758) 青眼蛺蝶
♂. TAIPEI CITY, Shilin, Tianxiyuan, 300m, 21. IX. 2010 (W. H. Chien).
178. *Junonia orithya* (Linnaeus, 1758) 青眼蛺蝶
♀. HUALIAN Co., Yuli, Chikeshan, 4. V. 2019 (J. Y. Liang).
179. *Junonia iphita* (Cramer, [1779]) (WSF) 黯眼蛺蝶 (高溫 / 雨季型)
♂. NANTOU Co., Renai, Huisun Forestry Station, 16. X. 2010 (Y. F. Hsu).
180. *Junonia iphita* (Cramer, [1779]) (DSF) 黯眼蛺蝶 (低溫 / 乾季型)
♂. PINGDONG Co., Wutai, Ali, 1200m, 5. III. 2011 (Y. F. Hsu).
181. *Junonia iphita* (Cramer, [1779]) (WSF) 黯眼蛺蝶 (高溫 / 雨季型)
♀. PINGDONG Co., Chunri, Dahan Forest Trail, 21+K, 20. VII. 2020 (C. W. Huang, C. J. Cheng & J. Y. Liang).
182. *Junonia iphita* (Cramer, [1779]) (DSF) 黯眼蛺蝶 (低溫 / 乾季型)
♀. JIAYI Co., Alishan, Shanmei, 500m, 31. III. 2007 (Y. F. Hsu).



177 ♂



177 ♀



178 ♂



178 ♀



179 ♂



179 ♀



180 ♂



180 ♀



181 ♂



181 ♀



182 ♂



182 ♀

183. *Junonia atlites* (Linnaeus, 1763) 波紋眼蛺蝶
♂. JINMEN Co., Jinsha, Wuhushan, 30. IX. 2000 (Y. T. Lo).
184. *Junonia atlites* (Linnaeus, 1763) 波紋眼蛺蝶
♀. PINGDONG Co., Mudan, Xuhai, 23. X. 2009 (Y. F. Hsu).
185. *Kallima inachus formosana* Fruhstorfer, 1913 枯葉蝶
♂. HUALIAN Co., Xiulin, Huide Tunnel, 30m, 25. VII. 2008 (M. H. Sun).
186. *Kallima inachus formosana* Fruhstorfer, 1913 枯葉蝶
♀. HUALIAN Co., Xiulin, Shikongzai, 60m, 25. VII. 2007 (M. H. Sun).



183 ♂



183 ♀



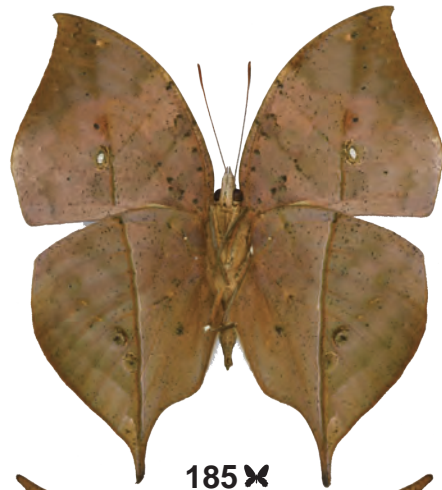
184 ♂



184 ♀



185 ♂



185 ♀



186 ♂



186 ♀



187. *Yoma sabina podium* Tsukada, 1985 黃帶隱蛺蝶
♂. PINGDONG Co., Shizi, Lilongshan, 500m, 23. VI. 2007, reared from *Ruellia prostrata*, emgd. 27. VII. 2007, HSU 07F40 (C. C. Lu, L. W. Wu & L. H. Wang).
188. *Yoma sabina podium* Tsukada, 1985 黃帶隱蛺蝶
♀. PINGDONG Co., Shizi, Lilongshan, 500m, 23. VI. 2007, reared from *Ruellia prostrata*, emgd. 27. VII. 2007, HSU 07F40 (C. C. Lu, L. W. Wu & L. H. Wang).
189. *Vanessa indica* (Herbst, 1794) 大紅蛺蝶
♂. HUALIAN Co., Xiulin, Guanyuan, 5. IX. 2018 (C. W. Huang).
190. *Vanessa indica* (Herbst, 1794) 大紅蛺蝶
♀. JILONG CITY, NTOU campus, 5. XI. 2009 (Z. H. Yen).



187 ♂



187 ♀



188 ♂



188 ♀



189 ♂



189 ♀



190 ♂



190 ♀



191. *Vanessa cardui* (Linnaeus, 1758) 小紅蛺蝶
♂. TAIPEI CITY, Wenshan, Gongguan campus, NTNU, 18. X. 2019, reared from *Artemisia indica*, emgd. 8. XI. 2019, HSU 19K16 (L. Huang).
192. *Vanessa cardui* (Linnaeus, 1758) 小紅蛺蝶
♀. TAIPEI CITY, Wenshan, Gongguan campus, NTNU, 18. X. 2019, reared from *Artemisia indica*, emgd. 5. XI. 2019, HSU 19K16 (L. Huang).
193. *Polygonia c-album asakurai* Nakahara, 1920 突尾鉤蛺蝶
♂. XINZHU Co., Jianshi, Lidongshan, 1500m, 31. III. 2009, reared from *Zelkova serrata*, emgd. 12. IV. 2009, HSU 09C56 (C. L. Huang).
194. *Polygonia c-album asakurai* Nakahara, 1920 突尾鉤蛺蝶
♀. HUALIAN Co., Xiulin, Cien, 15. VII. 2007, reared from *Ulmus uyematsui*, emgd. 27. VII. 2007, HSU 07G6 (C. C. Lu & L. H. Wang).
195. *Polygonia c-aureum lunulata* Esaki & Nakahara, 1924 (WSF) 黃鉤蛺蝶 (高溫/雨季型)
♂. TAIPEI CITY, Wenshan, Jingmei, 18. IX. 2008 (Y. F. Hsu).
196. *Polygonia c-aureum lunulata* Esaki & Nakahara, 1924 (DSF) 黃鉤蛺蝶 (低溫/乾季型)
♂. JIAYI Co., Xingang, Yuemei, 1. XII. 2008 (Y. F. Hsu).



191 ♂



191 ♀



192 ♂



192 ♀



193 ♂



193 ♀



194 ♂



194 ♀



195 ♂



195 ♀



196 ♂



196 ♀

197. *Polygonia c-aureum lunulata* Esaki & Nakahara, 1924 (WSF) 黃鈎蛺蝶 (高溫/雨季型)
♀. JIAYI Co., Xingang, Yuemei, 29. XI. 2008, reared from *Humulus scandens*,
emgd. 13. XII. 2008, HSU 08L29 (Y. F. Hsu).
198. *Polygonia c-aureum lunulata* Esaki & Nakahara, 1924 (DSF) 黃鈎蛺蝶 (低溫/乾季型)
♀. HUALIAN Co., Xiulin, Huitouwan, 700m, 30. I. 2007 (Y. F. Hsu).
199. *Polygonia c-aureum c-aureum* (Linnaeus, 1758) (DSF) 黃鈎蛺蝶 (低溫/乾季型)
♂. JINMEN Co., Jinhu, Jinmen Botanical Garden, 5. XI. 2015 (H. C. Huang).
200. *Polygonia c-aureum c-aureum* (Linnaeus, 1758) (DSF) 黃鈎蛺蝶 (低溫/乾季型)
♀. JINMEN Co., Jinsha, Tianpu Dam, 6. XI. 2015 (C. W. Huang).
201. *Kaniska canace drilon* (Fruhstorfer, 1908) 琉璃蛺蝶
♂. XINBEI CITY, Bali, Guanyinshan, 400/450m, 28. IV. 2011 (Z. H. Yen).
202. *Kaniska canace drilon* (Fruhstorfer, 1908) 琉璃蛺蝶
♀. TAIPEI CITY, Neihu, Daluntou, 21. X. 2013, emgd. 22. XI. 2013 (Y. M. Hsu).



197 ♂



197 ♀



198 ♂



198 ♀



199 ♂



199 ♀



200 ♂



200 ♀



201 ♂



201 ♀



202 ♂



202 ♀

203. *Kaniska canace canace* (Linnaeus, 1763) 琉璃蛺蝶
♂. JINEMN Co., Jinhu, Botanical Garden, 18/20. XI. 2013 (Y. F. Hsu & H. C. Huang).
204. *Kaniska canace canace* (Linnaeus, 1763) 琉璃蛺蝶
♀. LIANJIANG Co., Nangan, Tree Nursery, 18. VI. 2014 (C. L. Huang).
205. *Kaniska canace ishima* (Fruhstorfer, 1898) 琉璃蛺蝶
♂. TAIDONG Co., Lanyu, Sidaogou, 13/15. VI. 2003 (Y. F. Hsu).
206. *Nymphalis xanthomelas formosana* (Matsumura, 1925) 緋蛺蝶
♂. TAOYUAN CITY, Fuxing, Fufushan, 1400m, 4. III. 2020, reared from *Zelkova serrata*, emgd. 6. IV. 2020, HSU 20C4 (Y. F. Hsu).
207. *Nymphalis xanthomelas formosana* (Matsumura, 1925) 緋蛺蝶
♀. NANTOU Co., Renai, Kunyang, 24. VI. 2016 (J. Y. Liang).
208. *Symbrenthia lilaea formosanus* Fruhstorfer, 1908 散紋盛蛺蝶
♂. XINBEI CITY [= TAIPEI Co.], Wulai, 150m, 8. XI. 2004, reared from *Boehmeria nivea*, emgd. 18. XI. 2004, HSU 04L21 (Y. F. Hsu).



203 ♂



203 ♀



204 ♂



204 ♀



205 ♂



205 ♀



206 ♂



206 ♀



207 ♂



207 ♀



208 ♂



208 ♀



209. *Symbrenthia lilaea formosanus* Fruhstorfer, 1908 散紋盛蛺蝶
♀. TAOYUAN CITY [= TAOYUAN Co.], Fuxing, Damen, 10. VI. 2005, reared from *Boehmeria nivea*, emgd. 22/23. VI. 2005, HSU 05F28 (Y. F. Hsu).
210. *Symbrenthia lilaea lunica* Bascombe, Johnston & Bascombe, 1999 散紋盛蛺蝶 (華南亞種)
♂. MIAOLI Co., Sanwan, Emei Bridge, 14. I. 2006, reared from *Boehmeria nivea*, emgd. 3. II. 2006, HSU 06A12 (Y. F. Hsu).
211. *Symbrenthia lilaea lunica* Bascombe, Johnston & Bascombe, 1999 散紋盛蛺蝶 (華南亞種)
♀. XINZHU Co., Zhudong, 100m, 28. III. 2008 (Y. F. Hsu).
212. *Symbrenthia brabira scatinia* Fruhstorfer, 1908 黃豹盛蛺蝶
♂. NANTOU Co., Renai, Huisun, 600/700m, 20. II. 2012 (Y. F. Hsu & H. C. Huang).
213. *Symbrenthia brabira scatinia* Fruhstorfer, 1908 黃豹盛蛺蝶
♀. TAIZHONG CITY [= TAIZHONG Co.], Heping, Shangguguan, 900m, 30. X. 2006 (Y. F. Hsu).
214. *Hypolimnas misippus* (Linnaeus, 1764) 雌擬幻蛺蝶
♂. TAINAN CITY [= TAINAN Co.], Xinhua, 26. VII. 2007, reared from *Portulaca oleracea*, emgd. 2. IX. 2007, HSU 07G35 (Y. F. Hsu).
215. *Hypolimnas misippus* (Linnaeus, 1764) 雌擬幻蛺蝶
♀. TAINAN CITY [= TAINAN Co.], Xinhua, 26. VII. 2007, reared from *Portulaca oleracea*, emgd. 2. IX. 2007, HSU 07G35 (Y. F. Hsu).



209 ♂



209 ♀



210 ♂



210 ♀



211 ♂



211 ♀



212 ♂



212 ♀



213 ♂



213 ♀



214 ♂



214 ♀



215 ♂



215 ♀

216. *Hypolimnas bolina kezia* (Butler, 1877) 幻蛺蝶
♂. TAIDONG Co., Lanyu, Qiwei, 16. III. 2012, reared from *Achyranthes aspera* var. *rubro-fusca* [= *Achyranthes aspera* var. *rubrofusca*], emgd. 1. V. 2012, HSU 12C16 (Y. F. Hsu).
217. *Hypolimnas bolina kezia* (Butler, 1877) 幻蛺蝶
♀. TAIDONG Co., Haiduan, Liyuan, Southern Cross-Island Highway, 163K, 20/21. V. 2017 (C. W. Huang).
218. *Hypolimnas bolina philippensis* (Butler, 1874) 幻蛺蝶菲律賓型 (亞種)
♂. TAIDONG Co., Lanyu, Xiaotianchi, 8. IX. 2008 (C. H. Yen).
219. *Hypolimnas bolina iacintha* (Drury, 1773) 幻蛺蝶大陸型 (亞種)
♀. TAIDONG Co., Lanyu Storage Unit/ Longmen, 27. VIII. 1989 (M. L. Jeng).
220. *Hypolimnas bolina ?bolina* (Linnaeus, 1758) 幻蛺蝶紅斑型 (? 承名亞種)
♀. KAOHSIUNG CITY, Niasong, Chengqing Lake, 31. VII. 2019 (Y. H. Ou).



216 ♂



216 ♀



217 ♂



217 ♀



218 ♂



218 ♀



219 ♂



219 ♀



220 ♂



220 ♀



221. *Hypolimnas anomala truentus* Fruhstorfer, 1912 端紫幻蛺蝶
♂. TAIDONG Co., Ludao, 12. VIII. 2010, reared from *Pipturus arborescens*,
emgd. 6. IX. 2010, HSU 10H49 (H. C. Huang).
222. *Hypolimnas anomala truentus* Fruhstorfer, 1912 端紫幻蛺蝶
♀. TAIDONG Co., Ludao, 12. VIII. 2010, reared from *Pipturus arborescens*,
emgd. 6. IX. 2010, HSU 10H49 (H. C. Huang).
223. *Calinaga formosana* Fruhstorfer, 1908 臺灣絹蛺蝶
♂. XINBEI CITY [= TAIPEI Co.], Wulai, Fushan, 400m, 19. III. 2010 (Y. F.
Hsu).
224. *Calinaga formosana* Fruhstorfer, 1908 臺灣絹蛺蝶
♀. TAOYUAN CITY, Fuxing, Ronghua, 26. III. 2021 (C. W. Huang).



221 ♀



221 ♂



222 ♀



222 ♂



223 ♀



223 ♂



224 ♀



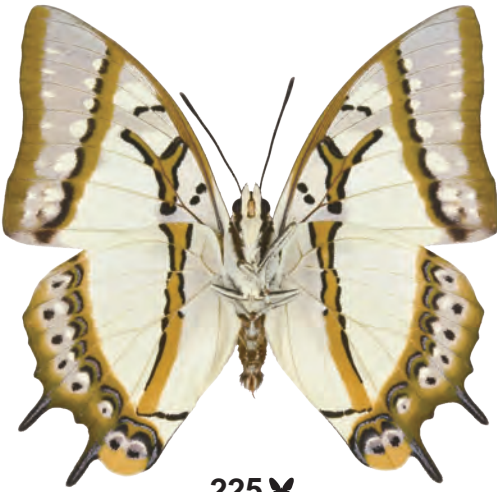
224 ♂



225. *Charaxes eudamippus formosanus* (Rothschild, 1899) 雙尾蛺蝶
♂. TAOYUAN CITY [= TAOYUAN Co.], Fuxing, Baling, 23. IV. 2004 (Y. F. Hsu).
226. *Charaxes eudamippus formosanus* (Rothschild, 1899) 雙尾蛺蝶
♀. TAIZHONG CITY [= TAIZHONG Co.], Dongshi, Zhongzheng Park, 9. V. 2005, reared from *Millettia reticulata* [= *Callerya reticulata*], emgd. 20. VI. 2005, HSU 05E39 (C. L. Huang & C. M. Wu).
227. *Charaxes narcaea meghaduta* (Fruhstorfer, 1908) 小雙尾蛺蝶
♂. XINBEI CITY, Danshui, Erziping, 20. IX. 2011, reared from *Maackia taiwanensis*, emgd. 31. X. 2011, HSU 11J6 (H. C. Huang).



225 ♂



225 ♀



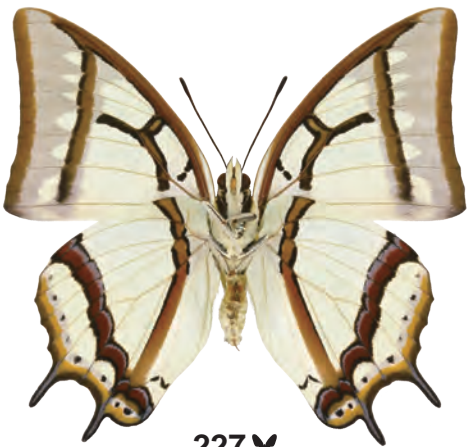
226 ♂



226 ♀



227 ♂



227 ♀



228. *Charaxes narcaea meghaduta* (Fruhstorfer, 1908) 小雙尾蛺蝶
♀. XINBEI CITY [= TAIPEI Co.], Wulai, Fushan Botanical Garden, 700m, 5. VIII. 2006, reared from *Maackia taiwanensis*, emgd. 1. IX. 2006 (Y. F. Hsu & H. C. Huang).
229. *Charaxes bernardus* (Fabricius, 1793) 玉帶螫蛺蝶
♂. LIANJIANG Co., Beigan, Jinsha, 18. XI. 2013 (L. H. Wang & H. Y. Lee).
230. *Charaxes bernardus* (Fabricius, 1793) 玉帶螫蛺蝶
♀. LIANJIANG Co., Beigan, Jinsha, 18. XI. 2013, reared from *Cinnamomum camphora*, emgd. 5. I. 2014 (L. H. Wang & H. Y. Lee).



228 ♂



228 ♀



229 ♂



229 ♀



230 ♂



230 ♀

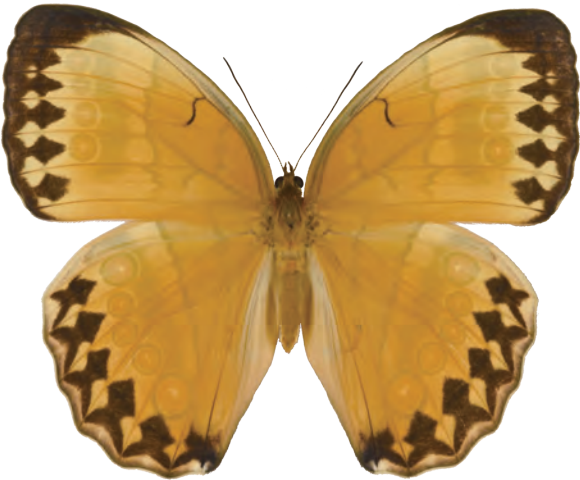
231. *Stichophthalma howqua formosana* Fruhstorfer, 1908 箭環蝶
♂. NANTOU Co., Lugu, Fenghuanggu Bird Park, 8. VII. 2012 (Y. F. Hsu).
232. *Stichophthalma howqua formosana* Fruhstorfer, 1908 箭環蝶
♀. TAIZHONG CITY, Heping, Malunshan, 30. X. 2016, reared from bamboo,
emgd. 4. VI. 2017, HSU16K33 (H. C. Huang).



231 ♂



231 ♀



232 ♂



232 ♀

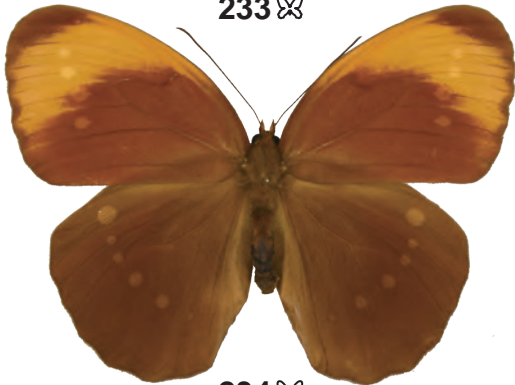
233. *Faunis eumeus* (Drury, 1770) 串珠環蝶
♂. JILONG CITY, Zhongzhen, Haimentianxian, 13. I. 2001 (M. H. Lin).
234. *Faunis eumeus* (Drury, 1770) 串珠環蝶
♀. JILONG CITY, Zhongzhen, Haimentianxian, 15. I. 2001 (M. H. Lin).
235. *Discophora sondaica tulliana* Stichel, 1905 方環蝶
♂. TAIPEI CITY, Shilin, Zhishanyan, 12. I. 2007, reared from *Bambusa* sp.,
emgd. 23. III. 2007, HSU 07A19 (Y. F. Hsu).
236. *Discophora sondaica tulliana* Stichel, 1905 方環蝶
♀. TAIPEI CITY, Shilin, Zhishanyan, 12. I. 2007, reared from *Bambusa* sp.,
emgd. 11. III. 2007, HSU 07A19 (Y. F. Hsu).



233 ♂



233 ♀



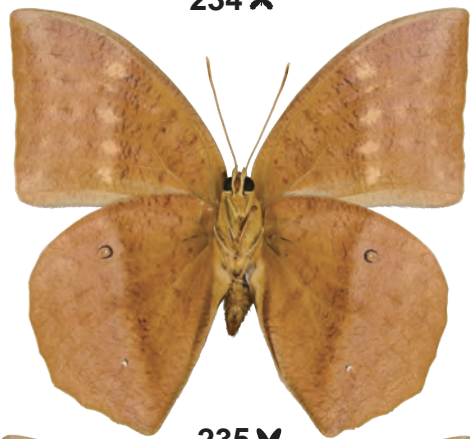
234 ♂



234 ♀



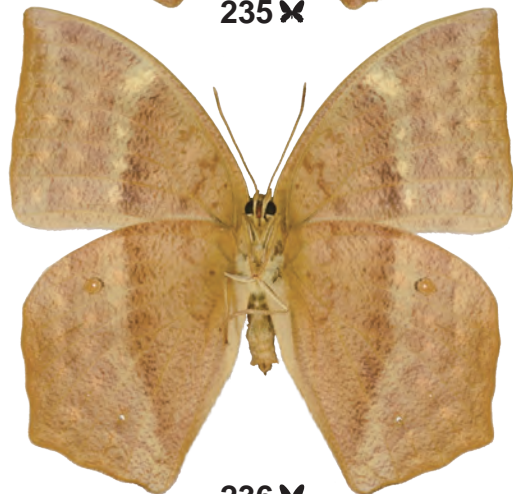
235 ♂



235 ♀



236 ♂



236 ♀



237. *Ypthima baldus zodina* Fruhstorfer, 1911 (WSF) 小波眼蝶 (高溫 / 雨季型)
♂. TAIPEI CITY, Beitou, Zhonghu, 28. IX. 2021 (C. W. Huang).
238. *Ypthima baldus zodina* Fruhstorfer, 1911 (DSF) 小波眼蝶 (低溫 / 乾季型)
♂. NANTOU Co., Renai, Huisun, 600/700m, 20. II. 2012 (Y. F. Hsu & H. C. Huang).
239. *Ypthima baldus zodina* Fruhstorfer, 1911 (WSF) 小波眼蝶 (高溫 / 雨季型)
♀. TAIDONG Co, Lanyu, Qiwei, 27. III. 2010 (J. H. Lin).
240. *Ypthima baldus zodina* Fruhstorfer, 1911 (DSF) 小波眼蝶 (低溫 / 乾季型)
♀. TAINAN CITY, Danei, Erxi, 13. II. 2012 (Y. F. Hsu).
241. *Ypthima okurai* Okano, 1962 (WSF) 大藏波眼蝶 (高溫 / 雨季型)
♂. KAOHSIUNG CITY, Taoyuan, Fenggangshan, 1100/1300m, 29. IX. 2020, reared from *Oplismenus* sp., emgd. 12. XI. 2020, HSU 20J26 (Y. F. Hsu).
242. *Ypthima okurai* Okano, 1962 (DSF) 大藏波眼蝶 (低溫 / 乾季型)
♂. PINGDONG Co., Wutai, Wutoushan, 1200m, 4. IV. 2002 (Y. F. Hsu, C. C. Lu & C. L. Huang).
243. *Ypthima okurai* Okano, 1962 (WSF) 大藏波眼蝶 (高溫 / 雨季型)
♀. KAOHSIUNG CITY [= KAOHSIUNG Co.], Taoyuan, Fenggangshan, 1300m, 24. IX. 2007 (Y. F. Hsu & G. P. Su).
244. *Ypthima okurai* Okano, 1962 (DSF) 大藏波眼蝶 (低溫 / 乾季型)
♀. PINGDONG Co., Wutai, Wutoushan, 1200m, 4. IV. 2002 (Y. F. Hsu, C. C. Lu & C. L. Huang).
245. *Ypthima tappana* Matsumura, 1909 達邦波眼蝶
♂. PINGDONG Co., Shizi, Shouka, 8/9. V. 2020 (Y. F. Hsu & J. Y. Liang).
246. *Ypthima tappana* Matsumura, 1909 達邦波眼蝶
♀. JILONG CITY, Longgang Trail, 50m, 11. IV. 2010 (C. L. Huang).
247. *Ypthima atra taiwana* Lamas, 2010 大波眼蝶
♂. NANTOU Co., Renai, Huisun, 600/700m, 20. II. 2012 (Y. F. Hsu & H. C. Huang).
248. *Ypthima atra taiwana* Lamas, 2010 大波眼蝶
♀. NANTOU Co., Renai, Huisun, 600/700m, 20. II. 2012 (Y. F. Hsu & H. C. Huang).



237 ♂



237 ♀



238 ♂



238 ♀



239 ♂



239 ♀



240 ♂



240 ♀



241 ♂



241 ♀



242 ♂



242 ♀



243 ♂



243 ♀



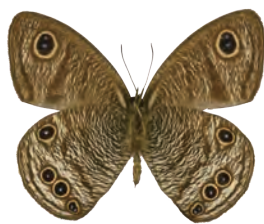
244 ♂



244 ♀



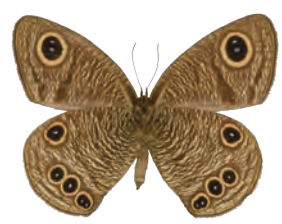
245 ♂



245 ♀



246 ♂



246 ♀



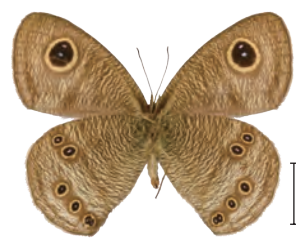
247 ♂



247 ♀



248 ♂



248 ♀

249. *Ypthima yamanakai* Sonan, 1938 白漪波眼蝶
♂. HUALIAN Co., Xiulin, Xinbaiyang, 1700m, 19. VI. 2009 (L. H. Wang).
250. *Ypthima yamanakai* Sonan, 1938 白漪波眼蝶
♀. XINZHU Co., Jianshi, Yulao, 1500m, 25. VI. 2009 (L. H. Wang).
251. *Ypthima angustipennis* Takahashi, 2000 狹翅波眼蝶
♂. TAOYUAN CITY [= TAOYUAN Co.], Fuxing, Xuanyuan, 1000m, 31. V. 2011 (J. H. Lin).
252. *Ypthima angustipennis* Takahashi, 2000 狹翅波眼蝶
♀. NANTOU Co., Renai, Huisun, 600/700m, 20. II. 2012 (Y. F. Hsu & H. C. Huang).
253. *Ypthima multistriata* Butler, 1883 密紋波眼蝶
♂. KAOHSIUNG CITY, Taoyuan, Zhongzhiguan, 28. IV. 2020 (C. W. Huang).
254. *Ypthima multistriata* Butler, 1883 密紋波眼蝶
♀. NANTOU Co., Renai, Huisun, Forestry Station, 16. X. 2010 (Y. F. Hsu).
255. *Ypthima esakii esakii* Shirôzu, 1960 (WSF) 江崎波眼蝶 (高溫 / 雨季型)
♂. KAOHSIUNG CITY, Taoyuan, Shidong, 600m, 11. VIII. 2011 (Y. F. Hsu).
256. *Ypthima esakii esakii* Shirôzu, 1960 (DSF) 江崎波眼蝶 (低溫 / 乾季型)
♂. NANTOU Co., Renai, Huisun, 600/700m, 20. II. 2012 (Y. F. Hsu & H. C. Huang).
257. *Ypthima esakii esakii* Shirôzu, 1960 (WSF) 江崎波眼蝶 (高溫 / 雨季型)
♀. HUALIAN Co., Xiulin, Lushui, 450m, 20. V. 2007 (L. H. Wang).
258. *Ypthima esakii esakii* Shirôzu, 1960 (DSF) 江崎波眼蝶 (低溫 / 乾季型)
♀. NANTOU Co., Renai, Huisun, 600/700m, 20. II. 2012 (Y. F. Hsu & H. C. Huang).
259. *Ypthima esakii wangi* Lee, 1998 江崎波眼蝶北部亞種
♂. XINBEI CITY [= TAIPEI Co.], Ruifang, Nanya, 26. IX. 1999 (Y. F. Hsu).
260. *Ypthima esakii wangi* Lee, 1998 江崎波眼蝶北部亞種
♀. XINBEI CITY [= TAIPEI Co.], Ruifang, Nanya, 12. X. 1999 (Y. F. Hsu).



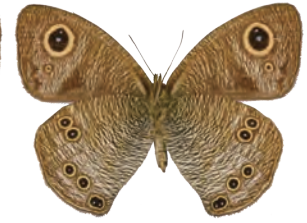
249 ♂



249 ♀



250 ♂



250 ♀



251 ♂



251 ♀



252 ♂



252 ♀



253 ♂



253 ♀



254 ♂



254 ♀



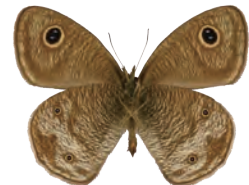
255 ♂



255 ♀



256 ♂



256 ♀



257 ♂



257 ♀



258 ♂



258 ♀



259 ♂



259 ♀



260 ♂



260 ♀

261. *Ypthima akragas* Fruhstorfer, 1911 白帶波眼蝶
♂. PINGDONG Co., Wutai, Wutoushan, 1100/1200m, 5. V. 2007 (Y. F. Hsu).
262. *Ypthima akragas* Fruhstorfer, 1911 白帶波眼蝶
♀. HUALIAN Co., Xiulin, Bilu, 2150m, 29. VII. 2018 (Y. F. Hsu).
263. *Ypthima praenubila kanonis* Matsumura, 1929 巨波眼蝶 (臺灣北部亞種)
♂. TAIPEI CITY, Beitou, Datunshan, 800m, 18. VI. 2007 (Y. F. Hsu).
264. *Ypthima praenubila kanonis* Matsumura, 1929 巨波眼蝶 (臺灣北部亞種)
♀. TAIPEI CITY, Beitou, Datunshan, 950m, 3. VII. 2008 (Y. F. Hsu).
265. *Ypthima praenubila neobilia* Murayama, 1980 巨波眼蝶 (臺灣中南部亞種)
♂. TAIDONG Co., Haiduan, Liyuan, 1750/1800m, 18/19. VI. 2020 (Y. F. Hsu & C. W. Huang).
266. *Ypthima praenubila neobilia* Murayama, 1980 巨波眼蝶 (臺灣中南部亞種)
♀. TAIDONG Co., Haiduan, Liyuan, 27. VI. 2020, emgd. 26. VI. 2021, HSU 20F18 (Y. Q. Yeh & Z. L. Chen).
267. *Ypthima norma posticalis* Matsumura, 1909 罕波眼蝶
♂. “13. 11. 3. 烏尖連峯 [3. XI. 1938. TAIPEI CITY: Beitou, Wujianlianfeng]” (TARI).
268. *Ypthima norma posticalis* Matsumura, 1909 罕波眼蝶
♀. [No label, data presumably same as Fig. 267] (TARI).



261 ♂



261 ♀



262 ♂



262 ♀



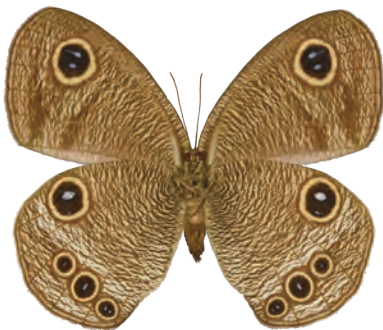
263 ♂



263 ♀



264 ♂



264 ♀



265 ♂



265 ♀



266 ♂



266 ♀



267 ♂



267 ♀



268 ♂



268 ♀



269. *Ypthima norma norma* Westwood, 1851 罕波眼蝶
♂. LIANJIANG Co., Beigan, Daqiu, 6. IX. 2014 (C. L. Huang & H. Y. Lee).
270. *Ypthima norma norma* Westwood, 1851 罕波眼蝶
♀. LIANJIANG Co., Beigan, Daqiu, 31. VII. 2008, reared from *Panicum* sp., emgd. 29. X. 2008, HSU 08H32 (D. C. Chen).
271. *Ypthima wenlungi* Takahashi, 2007 文龍波眼蝶
♂. KAOHSIUNG CITY [= KAOHSIUNG Co.], Taoyuan, Fenggangshan, 1300m, 30. IX. 2007, reared from *Oplismenus* sp., emgd. 26. XI. 2007, HSU 07J61 (Y. F. Hsu).
272. *Ypthima wenlungi* Takahashi, 2007 文龍波眼蝶
♀. KAOHSIUNG CITY [= KAOHSIUNG Co.], Taoyuan, Fenggangshan, 1300m, 24. IX. 2007 (Y. F. Hsu & G. P. Su).
273. *Ypthima lisandra* (Cramer, [1780]) 圓翅波眼蝶
♂. JINMEN Co., Jinhua, Jianhua, 20. VI. 2010, reared from *Paspalum conjugatum*, emgd. 26. VII. 2010, HSU 10F29 (C. K. Wang).
274. *Ypthima lisandra* (Cramer, [1780]) 圓翅波眼蝶
♀. JINMEN Co., Jinhua, Jianhua, 20. VI. 2010 (C. K. Wang).
275. *Palaeonympha opalina macrophthalmia* Fruhstorfer, 1911 古眼蝶
♂. TAOYUAN CITY, Fuxing, Baling Ancient Trail, 5. IV. 2017 (L. Huang).
276. *Palaeonympha opalina macrophthalmia* Fruhstorfer, 1911 古眼蝶
♀. PINGDONG Co., Chunri, Danhanshan, 26. IV. 2008 (R. K. Dong).
277. *Zophoessa dura neoclydes* (Fruhstorfer, 1909) 大幽眼蝶
♂. TAIDONG Co., Haiduan, Southern Cross-Island Highway, 160K, 20/21. V. 2017 (C. W. Huang).



269 ♂



269 ♀



270 ♂



270 ♀



271 ♂



271 ♀



272 ♂



272 ♀



273 ♂



273 ♀



274 ♂



274 ♀



275 ♂



275 ♀



276 ♂



276 ♀



277 ♂

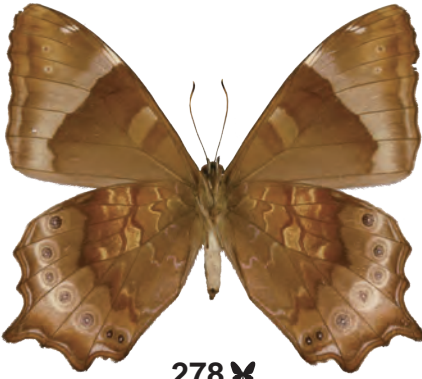


277 ♀

278. *Zophoessa dura neoclides* (Fruhstorfer, 1909) 大幽眼蝶
♀. HUALIAN Co., Xiulin, Guanyuan, 2200m, 7. VII. 2006 (L. H. Wang).
279. *Zophoessa siderea kanoi* (Esaki & Nomura, 1937) 圓翅幽眼蝶
♂. HUALIAN Co., Xiulin, Kuailin, 2100m, 14. I. 2007, reared from *Yushania niitakayamensis*, emgd. 13. III. 2007, HSU 07A22.2 (L. H. Wang).
280. *Zophoessa siderea kanoi* (Esaki & Nomura, 1937) 圓翅幽眼蝶
♀. HUALIAN Co, Xiulin, Nenggao Trail, 25K, 1800m, 1. I. 2007, reared from *Yushania niitakayamensis*, emgd. 4. III. 2007, HSU 07A10 (L. H. Wang).
281. *Zophoessa niitakana* (Matsumura, 1906) 玉山幽眼蝶
♂. NANTOU Co., Renai, Yunhai, 2400m, 13. I. 2007, reared from *Yushania niitakayamensis*, emgd. 19. III. 2007, HSU 07A21.1 (L. H. Wang).
282. *Zophoessa niitakana* (Matsumura, 1906) 玉山幽眼蝶
♀. HUALIAN Co., Xiulin, Xiaofengkou, 5. IX. 2018 (C. J. Chang).
283. *Lethe europa pavida* Fruhstorfer, 1908 (WSF) 長紋黛眼蝶 (高溫 / 雨季型)
♂. KAOHSIUNG CITY [= KAOHSIUNG Co.], Tianliao, 100m, 13. XI. 2010, reared from *Bambusa* sp., emgd. 23. XI. 2010, HSU 10L24 (Y. F. Hsu).
284. *Lethe europa pavida* Fruhstorfer, 1908 (DSF) 長紋黛眼蝶 (低溫 / 乾季型)
♂. YUNLIN Co., Douliu, Hushan Dam, 12. XII. 2015 (L. Huang & H. C. Huang).
285. *Lethe europa pavida* Fruhstorfer, 1908 (WSF) 長紋黛眼蝶 (高溫 / 雨季型)
♀. TAINAN CITY [= TAINAN Co.], Guantian, Wushantou, 24. XI. 2009, reared from *Bambusa* sp., emgd. 18. I. 2010, HSU 09L27 (Y. F. Hsu).



278 ♀



278 ♂



279 ♀



279 ♂



280 ♀



280 ♂



281 ♀



281 ♂



282 ♀



282 ♂



283 ♀



283 ♂



284 ♀



284 ♂



285 ♀



285 ♂

286. *Lethe europa pavida* Fruhstorfer, 1908 (DSF) 長紋黛眼蝶 (低溫 / 乾季型)
♀. XINZHU Co., Baoshan, Shanhu, 27. XII. 2008 (Y. F. Hsu).
287. *Lethe europa beroe* (Cramer, [1775]) 長紋黛眼蝶
♂. LIANJIANG Co., Beigan, Leishan, 20. XI. 2013 (L. H. Wang & H. Y. Lee).
288. *Lethe rohria daemniaca* Fruhstorfer, 1908 波紋黛眼蝶
♂. TAOYUAN CITY, Fuxing, Baling Ancient Trail, 1. IV. 2015, reared from *Miscanthus sinensis*, emgd. 14. V. 2015, HSU 15D01 (L. Huang).
289. *Lethe rohria daemniaca* Fruhstorfer, 1908 波紋黛眼蝶
♀. XINBEI CITY, Xindian, Dailaokengshan, 25. III. 2016, reared from *Miscanthus* sp., emgd. 25. II. 2016, HSU 16B5 (Y. F. Hsu).
290. *Lethe verma cintamani* Fruhstorfer, 1909 玉帶黛眼蝶
♂. XINZHU Co., Wufeng, E. branch Dalu Forest Trail, 2000m, 20. X. 2009 (L. H. Wang & C. H. Huang).
291. *Lethe verma cintamani* Fruhstorfer, 1909 玉帶黛眼蝶
♀. KAOHSIUNG CITY [= KAOHSIUNG Co.], Taoyuan, Meishan, 700m, 8. XI. 2010 (H. C. Huang).



286 ♂



286 ♀



287 ♂



287 ♀



288 ♂



288 ♀



289 ♂



289 ♀



290 ♂



290 ♀



291 ♂



291 ♀

292. *Lethe hyrania formosana* Fruhstorfer, 1908 深山黛眼蝶
♂. YILAN Co., Datong, Taipingshan, 1700m, 15. VI. 2007 (Y. F. Hsu).
293. *Lethe hyrania formosana* Fruhstorfer, 1908 深山黛眼蝶
♂. TAOYUAN CITY, Fuxing, Xuanyuan, 19. VII. 2018 (Y. F. Hsu).
294. *Lethe hyrania formosana* Fruhstorfer, 1908 深山黛眼蝶
♀. HUALIAN Co., Xiulin, Kuailin, 2100m, 14. I. 2007, reared from *Yushania nitakayamensis*, emgd. 19. II. 2007, HSU 07A22.3 (L. H. Wang).
295. *Lethe hyrania formosana* Fruhstorfer, 1908 深山黛眼蝶
♀. TAOYUAN CITY, Fuxing, Xuewunao, 1300m, 7. VI. 2017 (Y. F. Hsu).
296. *Lethe chandica ratnacri* Fruhstorfer, 1908 曲紋黛眼蝶
♂. TAIPEI CITY, Shilin, Tianxiyuan, 13. XII. 2013, reared from bamboo, emgd. 20. I. 2014, HSU 13M33 (Y. M. Hsu).
297. *Lethe chandica ratnacri* Fruhstorfer, 1908 曲紋黛眼蝶
♀. TAOYUAN CITY, Fuxing, Baling, 1. II. 2020, reared from *Miscanthus* sp., emgd. 20. III. 2020, HSU 20B4 (Y. F. Hsu).



292 ♀



292 ♂



293 ♀



293 ♂



294 ♀



294 ♂



295 ♀



295 ♂



296 ♀



296 ♂



297 ♀



297 ♂

298. *Lethe mataja* Fruhstorfer, 1908 臺灣黛眼蝶
♂. PINGDONG Co., Wutai, Wutoushan, 1200m, 6. VI. 2009 (Y. F. Hsu).
299. *Lethe mataja* Fruhstorfer, 1908 臺灣黛眼蝶
♀. NANTOU Co., Renai, Huisun, 600/700m, 20. II. 2012, reared from *Miscanthus sinensis*, emgd. 2. III. 2012, HSU 12B20 (Y. F. Hsu & H. C. Huang).
300. *Lethe christophi hanako* Fruhstorfer, 1908 柯氏黛眼蝶
♂. HUALIAN Co., Xiulin, Bilu, 2200m, 24. VII. 2005 (Y. F. Hsu).
301. *Lethe christophi hanako* Fruhstorfer, 1908 柯氏黛眼蝶
♀. YILAN Co., Nanao, Taipingshan, 28. VI. 1984 (Y. F. Hsu).
302. *Lethe butleri periscelis* (Fruhstorfer, 1908) 巴氏黛眼蝶
♂. TAOYUAN CITY [= TAOYUAN Co.], Fuxing, Daman, 700m, 10. VI. 2005 (Y. F. Hsu).
303. *Lethe butleri periscelis* (Fruhstorfer, 1908) 巴氏黛眼蝶
♀. HUALIAN Co., Xiulin, Lushui, 450m, 20. V. 2007 (L. H. Wang).



298 ♂



298 ♀



299 ♂



299 ♀



300 ♂



300 ♀



301 ♂



301 ♀



302 ♂



302 ♀



303 ♂



303 ♀

304. *Lethe gemina zaitha* Fruhstorfer, 1914 孿斑黛眼蝶
♂. NANTOU Co., Renai, Beidongyanshan, 1500m, 28. X. 2006, reared from
Miscanthus sinensis, emgd. 27. III. 2007, HSU 06L29 (Y. F. Hsu).
305. *Lethe gemina zaitha* Fruhstorfer, 1914 孿斑黛眼蝶
♀. NANTOU Co., Renai, Beidongyanshan, 1500m, 28. X. 2006, reared from
Miscanthus sinensis, emgd. 1. IV. 2007, HSU 06L29 (Y. F. Hsu).
306. *Neope pulaha didia* (Fruhstorfer, 1909) 黃斑蔭眼蝶
♂. TAIZHONG CITY [= TAIZHONG Co.], Heping, Siyuan, 2100m, 24. IV.
2009 (C. L. Huang).
307. *Neope pulaha didia* (Fruhstorfer, 1909) 黃斑蔭眼蝶
♀. NANTOU Co., Renai, Tunyuan, 5. V. 2010 (L. H. Wang).
308. *Neope bremeri watanabei* Matsumura, 1909 (WSF) 布氏蔭眼蝶 (高溫 / 雨季型)
♂. NANTOU Co., Renai, Beidongyanshan, 1500m, 28. X. 2006 (Y. F. Hsu).
309. *Neope bremeri watanabei* Matsumura, 1909 (DSF) 布氏蔭眼蝶 (低溫 / 乾季型)
♂. YILAN Co., Datong, Renze Spring [= Jiuzhize Spring], 15. II. 1987 (Y. F.
Hsu).



304 ♂



304 ♀



305 ♂



305 ♀



306 ♂



306 ♀



307 ♂



307 ♀



308 ♂



308 ♀



309 ♂



309 ♀

310. *Neope bremeri watanabei* Matsumura, 1909 (WSF) 布氏蔭眼蝶 (高溫 / 雨季型)
♀. XINBEI CITY, Xindian, Sikanshui, 1. III. 2019, reared from *Miscanthus sinensis*, emgd. 18. IV. 2019, HSU 19C3 (Y. F. Hsu).
311. *Neope bremeri watanabei* Matsumura, 1909 (DSF) 布氏蔭眼蝶 (低溫 / 乾季型)
♀. TAOYUAN CITY [= TAOYUAN Co.], Fuxing, Baling, 600m, 23. II. 2010 (Y. F. Hsu).
312. *Neope arandii laticolora* (Fruhstorfer, 1908) 白斑蔭眼蝶
♂. TAIDONG Co., Haiduan, Southern Cross-Island Highway, 160K, 20/21. V. 2017 (C. W. Huang).
313. *Neope arandii laticolora* (Fruhstorfer, 1908) 白斑蔭眼蝶
♀. TAIZHONG CITY [= TAIZHONG Co.], Heping, Xueshan, Qika, 2600m, 19/21. IX. 2005 (Y. F. Hsu).
314. *Neope muirheadii nagasawae* Matsumura, 1919 (WSF) 褐翅蔭眼蝶 (高溫 / 雨季型)
♂. TAINAN CITY, Zuozen, Caoshan, 16. VII. 2018 (Y. F. Hsu).
315. *Neope muirheadii nagasawae* Matsumura, 1919 (DSF) 褐翅蔭眼蝶 (低溫 / 乾季型)
♂. XINBEI CITY [= TAIPEI Co.], Wulai, 2. III. 2007 (Y. F. Hsu).



310 ♂



310 ♀



311 ♂



311 ♀



312 ♂



312 ♀



313 ♂



313 ♀



314 ♂



314 ♀



315 ♂



315 ♀

316. *Neope muirheadii nagasawae* Matsumura, 1919 (WSF) 褐翅蔭眼蝶 (高溫 / 雨季型)
♀. TAOYUAN CITY [= TAOYUAN Co.], Fuxing, Baling, 1000m, 11. VII. 2011 (H. C. Huang).
317. *Neope muirheadii nagasawae* Matsumura, 1919 (DSF) 褐翅蔭眼蝶 (低溫 / 乾季型)
♀. XINBEI CITY [= TAIPEI Co.], Jinshan, Dingbayan, 19. III. 2013 (C. L. Huang).
318. *Mycalesis francisca formosana* Fruhstorfer, 1908 (WSF) 眉眼蝶 (高溫 / 雨季型)
♂. TAOYUAN CITY, Fuxing, Xuanyuan, 19. VII. 2018 (C. W. Huang).
319. *Mycalesis francisca formosana* Fruhstorfer, 1908 (DSF) 眉眼蝶 (低溫 / 乾季型)
♂. JIAYI Co., Alishan, Shanmei, 30. III. 2008 (Y. F. Hsu).
320. *Mycalesis francisca formosana* Fruhstorfer, 1908 (WSF) 眉眼蝶 (高溫 / 雨季型)
♀. KAOHSIUNG CITY, Taoyuan, Meishan, 27. X. 2016 (L. Huang).
321. *Mycalesis francisca formosana* Fruhstorfer, 1908 (DSF) 眉眼蝶 (低溫 / 乾季型)
♀. JIAYI Co., Alishan, Shanmei, 500m, 31. III. 2007 (Y. F. Hsu).
322. *Mycalesis gotama nanda* Fruhstorfer, 1908 (WSF) 稻眉眼蝶 (高溫 / 雨季型)
♂. XINBEI CITY, Danshui, Pingding, 250m, 1. VIII. 2011 (H. C. Huang).
323. *Mycalesis gotama nanda* Fruhstorfer, 1908 (DSF) 稻眉眼蝶 (低溫 / 乾季型)
♂. XINBEI CITY [= TAIPEI Co.], Wulai, 30. XI. 2004 (Y. F. Hsu).
324. *Mycalesis gotama nanda* Fruhstorfer, 1908 (WSF) 稻眉眼蝶 (高溫 / 雨季型)
♀. NANTOU Co, Renai, Songboling, emgd. 20. XII. 2008 (Y. T. Lo).



316 ♂



316 ♀



317 ♂



317 ♀



318 ♂



318 ♀



319 ♂



319 ♀



320 ♂



320 ♀



321 ♂



321 ♀



322 ♂



322 ♀



323 ♂



323 ♀



324 ♂



324 ♀

325. *Mycalesis gotama nanda* Fruhstorfer, 1908 (DSF) 稻眉眼蝶 (低溫 / 乾季型)
♀. NANTOU Co., Lugu, 500m, 20. I. 2009 (Y. F. Hsu).
326. *Mycalesis kagina* Fruhstorfer, 1908 嘉義眉眼蝶
♂. TAINAN CITY, Dongshan, Kantoushan, ca 600m, 21. X. 2014, reared from *Zingiber kawagooi*, emgd. 20. XI. 2014, HSU 14K46 (Y. F. Hsu).
327. *Mycalesis kagina* Fruhstorfer, 1908 嘉義眉眼蝶
♀. TAINAN CITY, Dongshan, Kantoushan, 600/800m, 18. XI. 2011, reared from *Zingiber kawagooi*, emgd, 6. XII. 2011, HSU 11L10 (Y. F. Hsu).
328. *Mycalesis perseus blasius* (Fabricius, 1798) (WSF) 曲斑眉眼蝶 (高溫 / 雨季型)
♂. TAIDONG Co., Beinan, Danan, 100m, 27. V. 2005 (Y. F. Hsu).
329. *Mycalesis perseus blasius* (Fabricius, 1798) (DSF) 曲斑眉眼蝶 (低溫 / 乾季型)
♂. KAOHSIUNG CITY [= KAOHSIUNG Co.], Liugui, 200m, 29. X. 2006, reared from *Panicum* sp., emgd. 26. XII. 2006, HSU 06K60 (Y. F. Hsu).
330. *Mycalesis perseus blasius* (Fabricius, 1798) (WSF) 曲斑眉眼蝶 (高溫 / 雨季型)
♀. PINGDONG Co., Pingdong City, Pingdong Airport, 12. VIII. 2000 (S. C. Chen).
331. *Mycalesis perseus blasius* (Fabricius, 1798) (DSF) 曲斑眉眼蝶 (低溫 / 乾季型)
♀. TAIDONG Co., Taidong City, Pipa Lake, 16. X. 2007, reared from grass, emgd. 23. XII. 2007, HSU 07K32 (Y. F. Hsu).
332. *Mycalesis mucianus zonatus* Matsumura, 1909 (WSF) 切翅眉眼蝶 (高溫 / 雨季型)
♂. TAIPEI CITY, Wenshan, Gongguan campus, NTNU, 2. V. 2014 (L. Huang).
333. *Mycalesis mucianus zonatus* Matsumura, 1909 (DSF) 切翅眉眼蝶 (低溫 / 乾季型)
♂. KAOHSIUNG CITY [= KAOHSIUNG Co.], Liugui, 200m, 31. XII. 2006 (Y. F. Hsu).
334. *Mycalesis mucianus zonatus* Matsumura, 1909 (WSF) 切翅眉眼蝶 (高溫 / 雨季型)
♀. TAIPEI CITY, Wenshan, Gongguan campus, NTNU, 29. IV. 2014 (Y. F. Hsu).



325 ♀



325 ♂



326 ♀



326 ♂



327 ♀



327 ♂



328 ♀



328 ♂



329 ♀



329 ♂



330 ♀



330 ♂



331 ♀



331 ♂



332 ♀



332 ♂



333 ♀



333 ♂



334 ♀



334 ♂

335. *Mycalesis mucianus zonatus* Matsumura, 1909 (DSF) 切翅眉眼蝶 (低溫 / 乾季型)
♀. TAINAN CITY, Dongshan, Kantoushan, 600/800m, 18. XI. 2011 (Y. F. Hsu).
336. *Mycalesis mineus* (Linnaeus, 1758) (WSF) 小眉眼蝶 (高溫 / 雨季型)
♂. TAIDONG Co., Taidong City, Pipa Lake, 16. X. 2007 (Y. F. Hsu).
337. *Mycalesis mineus* (Linnaeus, 1758) (DSF) 小眉眼蝶 (低溫 / 乾季型)
♂. JIAYI CITY, Lantan, 12. II. 2006 (Y. F. Hsu).
338. *Mycalesis mineus* (Linnaeus, 1758) (WSF) 小眉眼蝶 (高溫 / 雨季型)
♂. JINMEN Co., Jinsha, nr. Houling Park, 28/29. VIII. 2011 (Y. F. Hsu & H. C. Huang).
339. *Mycalesis mineus* (Linnaeus, 1758) (DSF) 小眉眼蝶 (低溫 / 乾季型)
♂. JINMEN Co., Jinsha, Houling, 18. XI. 2013 (Y. F. Hsu & H. C. Huang).
340. *Mycalesis mineus* (Linnaeus, 1758) (WSF) 小眉眼蝶 (高溫 / 雨季型)
♀. TAIDONG Co., Taidong City, Pipa Lake, 16. X. 2007 (Y. F. Hsu).
341. *Mycalesis mineus* (Linnaeus, 1758) (DSF) 小眉眼蝶 (低溫 / 乾季型)
♀. KAOHSIUNG CITY, Tianliao, 80m, 3. XII. 2011 (Y. F. Hsu).
342. *Mycalesis mineus* (Linnaeus, 1758) (WSF) 小眉眼蝶 (高溫 / 雨季型)
♀. JINEMN Co., Jinning, Zhongshan Forest, 5. XI. 2013 (C. L. Huang & H. C. Huang).
343. *Mycalesis mineus* (Linnaeus, 1758) (DSF) 小眉眼蝶 (低溫 / 乾季型)
♀. JINEMN Co., Jinsha, Shishan, 18. XI. 2013 (Y. F. Hsu & H. C. Huang).
344. *Telinga mara* (Fruhstorfer, 1908) (WSF) 淺色眉眼蝶 (高溫 / 雨季型)
♂. TAIDONG Co., Donghe, Donghe Farm, 350m, 16. X. 2007 (Y. F. Hsu).



335 ♂



335 ♀



336 ♂



336 ♀



337 ♂



337 ♀



338 ♂



338 ♀



339 ♂



339 ♀



340 ♂



340 ♀



341 ♂



341 ♀



342 ♂



342 ♀



343 ♂



343 ♀



344 ♂



344 ♀

345. *Telinga mara* (Fruhstorfer, 1908) (DSF) 淺色眉眼蝶 (低溫 / 乾季型)
♂. PINGDONG Co., Wutai, Old Dawu/Bayouxi, 500/900m, 17. III. 2009 (Y. F. Hsu & H. C. Huang).
346. *Telinga mara* (Fruhstorfer, 1908) (WSF) 淺色眉眼蝶 (高溫 / 雨季型)
♀. TAINAN CITY, Dongshan, Kantoushan, 25. III. 2020, emgd. 9. V. 2020, HSU 20C61 (C. W. Huang & S. Y. Chen).
347. *Telinga mara* (Fruhstorfer, 1908) (DSF) 淺色眉眼蝶 (低溫 / 乾季型)
♀. PINGDONG Co., Wutai, Wutoushan, 26. IV. 1999 (Y. F. Hsu).
348. *Minois nagasawae* (Matsumura, 1906) 永澤蛇眼蝶
♂. NANTOU Co., Renai, Nenggao/Tianchi, 17. IX. 2010 (C. L. Huang).
349. *Minois nagasawae* (Matsumura, 1906) 永澤蛇眼蝶
♀. NANTOU Co., Renai, Tianchi, 17. IX. 2010 (C. L. Huang).
350. *Melanitis leda* (Linnaeus, 1758) (WSF) 暮眼蝶 (高溫 / 雨季型)
♂. TAINAN CITY, Xinhua, 20m, 20. XI. 2011, reared from *Panicum maximum*, emgd. 22. XI. 2011, HSU 11L15 (Y. F. Hsu).
351. *Melanitis leda* (Linnaeus, 1758) (DSF) 暮眼蝶 (低溫 / 乾季型)
♂. TAINAN CITY [= TAINAN Co.], Guantian, Wushantou, 80m, 19. XI. 2005, reared from *Pennisetum purpureum*, emgd. 19. XII. 2005, HSU 05M39 (Y. F. Hsu).
352. *Melanitis leda* (Linnaeus, 1758) (WSF) 暮眼蝶 (高溫 / 雨季型)
♀. TAINAN CITY, Guantian, Wushantou, 6. IX. 2011, reared from *Panicum maximum*, emgd. 10. IX. 2011, HSU 11J11 (Y. F. Hsu).



345 ♂



345 ♀



346 ♂



346 ♀



347 ♂



347 ♀



348 ♂



348 ♀



349 ♂



349 ♀



350 ♂



350 ♀



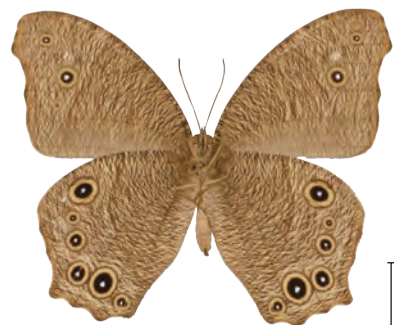
351 ♂



351 ♀



352 ♂



352 ♀

353. *Melanitis leda* (Linnaeus, 1758) (DSF) 暮眼蝶 (低溫 / 乾季型)
♀. TAINAN CITY, Xinhua, 20m, 20. XI. 2011 (Y. F. Hsu).
354. *Melanitis phedima polishana* Fruhstorfer, 1908 (WSF) 森林暮眼蝶 (高溫 / 雨季型)
♂. TAIPEI CITY, Songshan, Hushan, 20. IV. 2010 (C. L. Huang).
355. *Melanitis phedima polishana* Fruhstorfer, 1908 (DSF) 森林暮眼蝶 (低溫 / 乾季型)
♂. TAINAN CITY, Dongshan, Kantoushan, 600/800m, 4. II. 2011 (Y. F. Hsu).
356. *Melanitis phedima polishana* Fruhstorfer, 1908 (WSF) 森林暮眼蝶 (高溫 / 雨季型)
♀. TAIPEI CITY, Wenshan, Gongguan campus, NTNU, 5. VI. 2020, reared from *Oplismenus compositus*, emgd. 3. VII. 2020 (S. Y. Chen).
357. *Melanitis phedima polishana* Fruhstorfer, 1908 (DSF) 森林暮眼蝶 (低溫 / 乾季型)
♀. TAINAN CITY [= TAINAN Co.], Xinhua, Dakeng, 80m, 10/11. II. 2006 (Y. F. Hsu).
358. *PentHEMA formosanum* (Rothschild, 1898) 臺灣斑眼蝶
♂. XINBEI CITY, Danshui, Erziping, 800m, 31. V. 2011 (H. C. Huang).



353 ♂



353 ♀



354 ♂



354 ♀



355 ♂



355 ♀



356 ♂



356 ♀



357 ♂



357 ♀



358 ♂



358 ♀

359. *PentHEMA formosanum* (Rothschild, 1898) (melanized form) 臺灣斑眼蝶 (黑化型)
♂. PINGDONG Co., Shizi, Shouka, 8/9. V. 2020 (Y. F. Hsu & J. Y. Liang).
360. *PentHEMA formosanum* (Rothschild, 1898) 臺灣斑眼蝶
♀. XINBEI CITY, Danshui, Erziping, 700m, 18. VIII. 2011 (Y. T. Lin).
361. *Elymnia hypermnestra hainana* Moore, 1878 藍紋鋸眼蝶
♂. KAOHSIUNG CITY, Tianliao, 23. II. 2021, reared from *Phoenix loureiroi*[= *P. hanceana*], emgd. 5. III. 2021, HSU 21B17 (Y. F. Hsu).
362. *Elymnia hypermnestra hainana* Moore, 1878 藍紋鋸眼蝶
♀. KAOHSIUNG CITY, Tianliao, 23. II. 2021, reared from *Phoenix loureiroi*[= *P. hanceana*], emgd. 3. III. 2021, HSU 21B17 (Y. F. Hsu).



359 ♂



359 ♀



360 ♂



360 ♀



361 ♂



361 ♀



362 ♂



362 ♀



363. *Libythea geoffroy philippina* Staudinger, 1889 紫喙蝶

♂. INDONESIA: S. SULAWESI PROV., Bantimurubg near Maros, IV. 2013
(Native collector).

364. *Parantica luzonensis* (C. & R. Felder, 1863) 呂宋絹斑蝶

♂. PHILIPPINES: IFUGAO PROV., Kinakin, IX. 2013.

365. *Parthenos sylla philippensis* Fruhstorfer, 1898 麗蛺蝶

♂. PHILIPPINES: Mindanao, Dava, 6. XII. 2014 (C. L. Huang).



363 ♀



363 ♂



364 ♀



364 ♂



365 ♀



365 ♂



366. *Neptis thisbe* (Ménétriés, 1859) 提環蛺蝶

♀. CHINA: GUANGDONG PROV., Shaoguan Shi, Ruyuan Xian, Ruyang, Laopenkeng, 1000/1100m, 5/6. II. 2001, reared from *Fagus longipetiolata*, emgd. 16. IV. 2001, HSU 01B3 (Y. F. Hsu, C. C. Lu & Y. T. Lo).

367. *Neptis rivularis bergmanni* Bryk, 1942 單環蛺蝶

♂. Holotype of *Neptis coenobita* var. *formosana* Matsumura, 1919; “台北 [Taihoku/Taipei]/ 37. 6. 4 [4. VI. 1904]/ Type Matsumura [red label]” (Systematic Entomology Laboratory, Hokkaido University, SEHU).

368. *Neptis rivularis bergmanni* Bryk, 1942 單環蛺蝶

♂. “台北 ニトベ [Taihoku Nitobe]/*Neptis coenobita formosicola* Mats.” (Taiwan Agriculture Research Institute, TARI).

369. *Cethosia biblis* (Drury, 1770) 紅鋸蛺蝶

♂. JINMEN Co., Jinsha, Shishan, 6. XI. 2015 (L. Huang).



366 ♂



366 ♀



367 ♂



367 ♀



368 ♂



368 ♀



369 ♂



369 ♀



370. *Apatura ilia nikosia* Fruhstorfer, 1913 細帶閃蛺蝶
♂. CHINA: SHAANXI PROV., Huayin Shi, Huayin, 400m, 4. IX. 2009 (Y. F. Hsu).
371. *Apatura ilia nikosia* Fruhstorfer, 1913 細帶閃蛺蝶
♀. CHINA: YUNNAN PROV., Kunming Shi, Helongtan, 14. VII. 2009 (Y. F. Hsu).
372. *Hestina japonica manja* Fruhstorfer, 1913 小脈蛺蝶
♂. CHINA: YUNNAN PROV., Dehong Zhou, Ruili Shi, Bangdashan, 1400m, 5/6. IX. 2014 (Y. F. Hsu & N. Y. Tsai).
373. *Doleschallia bisaltide philippensis* Fruhstorfer, 1899 蠹葉蝶
♂. PHILIPPINES: BATANES PROV., Sabtang Is., Sumnanga, 20. III. 2014, reared from *Pseuderanthemum curtatum*, emgd. 17. IV. 2014, HSU 14C22 (Y. F. Hsu, C. L. Huang & H. C. Huang).
374. *Doleschallia bisaltide philippensis* Fruhstorfer, 1899 蠹葉蝶
♀. PHILIPPINES: BATANES PROV., Sabtang Is., Sumnanga, 20. III. 2014, reared from *Pseuderanthemum curtatum*, emgd. 16. IV. 2014, HSU 14C22 (Y. F. Hsu, C. L. Huang & H. C. Huang).



370 ♂



370 ♀



371 ♂



371 ♀



372 ♂



372 ♀



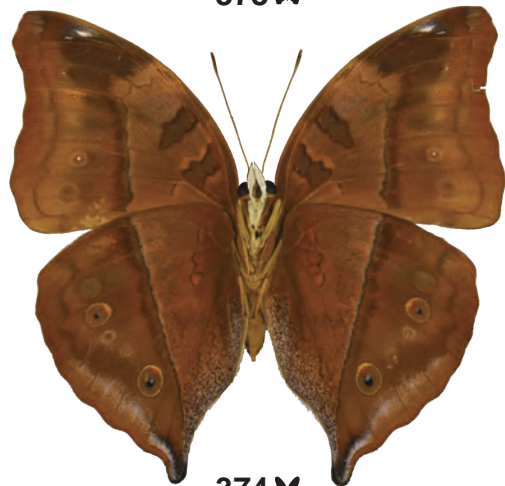
373 ♂



373 ♀



374 ♂



374 ♀



375. *Junonia hedonia ida* (Cramer, 1779) 南洋眼蛺蝶
♂. PHILIPPINES: BATANES PROV., Batan Is., Basco, Mt. Irajá, 17. III. 2013
(Y. F. Hsu).
376. *Junonia hedonia ida* (Cramer, 1779) 南洋眼蛺蝶
♀. JAPAN: OKINAWA PREF., Yaeyama, Takatomi, Iriomote, 1. VII. 1990 (J &
Y Iwahashi).
377. *Mycalesis igoleta* C. & R. Felder, 1863 伊果眉眼蝶
♂. TAIDONG Co., Lanyu, Xiaotianchi, 26. IV. 2010 (J. H. Lin).
378. *Mycalesis igoleta* C. & R. Felder, 1863 伊果眉眼蝶
♀. TAIDONG Co., Lanyu, Xiaotianchi, 26. IV. 2010 (J. H. Lin).
379. *Lethe diana australis* Naritomi, 1943 月神黛眼蝶
Holotype ♀ of *Lethe diana australis* Naritomi, 1943 ; “(台) ムシヤ 17年8
月10日 [Taiwan Musha 17. 8. 10] [Wushe, 10. VIII. 1942]/ HOLOTYPE ssp.
australis [red label]” (University Museum, University of Tokyo, UMUT).
380. *Lethe confusa* Aurivillius, 1898 白帶黛眼蝶
♂. HONG KONG: New Territory, Wu Kau Tang, 100m, 6. IX. 2006 (Y. F. Hsu, P.
Loh & L. W. Wu).



375 ♂



375 ♀



376 ♂



376 ♀



377 ♂



377 ♀



378 ♂



378 ♀



379 ♂



379 ♀



380 ♂



380 ♀



MALE GENITALIA

Note. Scale bars represent 1 mm.

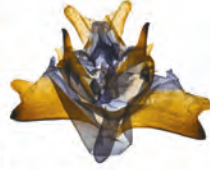
381. *Libythea lepita formosana* Fruhstorfer, 1909 東方喙蝶
♂. YILAN Co., Nanao, Dabaishan, 21. VII. 2016 (L. Huang) (genitalia preparation JYL824).
382. *Danaus plexippus* (Linnaeus, 1758) 帝王斑蝶
♂. USA: TX: Harris Co., Houston, IV. 2007, reared from *Asclepias curassavica*, emgd., 25. IV. 2007, HSU 07D7 (H. H. Chuah) (genitalia preparation JYL1033).
383. *Danaus genutia* (Cramer, [1779]) 虎斑蝶
♂. TAIPEI CITY, Shilin, Zhishanyan, 1. VI. 2015 (L. Huang) (genitalia preparation JYL728).
384. *Danaus melanippus edmondii* (Bougainville, 1837) 白虎斑蝶
♂. PHILIPPINES: BATANES PROV., Turahan, San Rafael, 14. IV. 2013 (Y. F. Hsu) (genitalia preparation JYL1026).



381



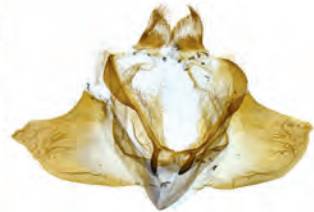
382



383



384



385. *Danaus chrysippus* (Linnaeus, 1758) 金斑蝶
♂. TAIZHONG CITY, Tanzi, Tanzi Elementary School, 4. VII. 2015 (L. Huang)
(genitalia preparation JYL729).
386. *Tirumala limniace limniace* (Cramer, [1775]) 淡紋青斑蝶
♂. TAIPEI CITY, Wenshan, Gongguan campus, NTNU, 8. IX. 2018, emgd. 19.
IX. 2018 (L. Huang) (genitalia preparation JYL963).
387. *Tirumala septentrionis* (Butler, 1874) 小紋青斑蝶
♂. TAIPEI CITY, Shilin, Zhishanyan, 8. V. 2015 (L. Huang) (genitalia prepara-
tion JYL749).
388. *Parantica aglea maghaba* (Fruhstorfer, 1909) 絹斑蝶
♂. PINGDONG Co., Chunri, Dahanshan, 2. IX. 2014 (C. L. Huang) (genitalia
preparation JYL742).



385



386



387



388

389. *Parantica swinhoei* (Moore, 1883) 斯氏絹斑蝶

♂. HUALIAN Co., Zhuoxi, Nanan, 22. IV. 2015 (J. Y. Liang) (genitalia preparation JYL744).

390. *Parantica sita nipponica* (Moore, 1883) 大絹斑蝶

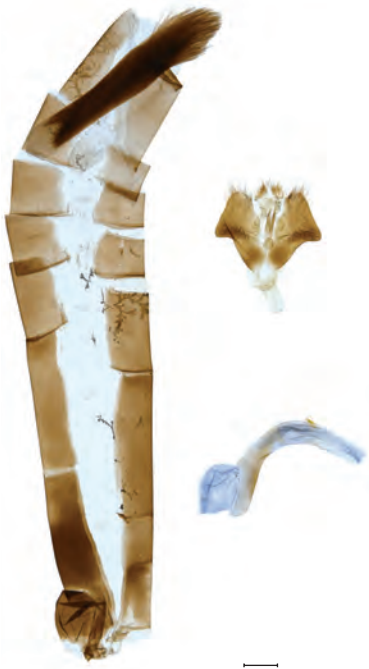
♂. PENGHU Co., Xiyu, East Fort, 11. VI. 2014 (C. W. Huang) (genitalia preparation JYL746).

391. *Ideopsis similis* (Linnaeus, 1758) 旖斑蝶

♂. MIAOLI Co., Sanyi, Zhentoushan, 13. IX. 2015 (L. Huang) (genitalia preparation JYL752).

392. *Euploea sylvester swinhoei* Wallace, 1866 雙標紫斑蝶

♂. TAIDONG Co., Beinan, Zhiben Forest Trail, 31. X. 2015 (L. Huang) (genitalia preparation JYL732).



389



390



391



392

393. *Euploea midamus* (Linnaeus, 1758) 藍點紫斑蝶
♂. JINEMN Co., Jinning, 5. XI. 2015 (L. Huang) (genitalia preparation JYL740).
394. *Euploea mulciber barsine* Fruhstorfer, 1904 異紋紫斑蝶
♂. PINGDONG Co., Chunri, Dahanshan, 2. IX. 2014 (C. L. Huang) (genitalia preparation JYL735).
395. *Euploea phaenareta juvia* Fruhstorfer, 1908 大紫斑蝶
♂. THAILAND: PHUKET PROV., Rt4020, Mu Ban Phuket Hopeland, 24. VIII. 2016, reared from *Cerbera* sp., emgd. 28. VIII. 2016, HSU 16H50 (Y. F. Hsu & H. C. Huang) (genitalia preparation JYL1015).
396. *Euploea eunice hobsoni* (Butler, 1877) 圓翅紫斑蝶
♂. TAOYUAN CITY [= TAOYUAN Co.], Fuxing, Xuanyuan Trail, 1000m, 19. V. 2012, reared from *Ficus erecta*, emgd. 25. V. 2012, HSU 12E6 (H. C. Huang) (genitalia preparation JYL1013).



393



394



395



396

397. *Euploea tulliolus koxinga* Fruhstorfer, 1908 小紫斑蝶
♂. PINGDONG Co., Chunri, Dahanshan, 2. IX. 2014 (C. L. Huang) (genitalia preparation JYL738).
398. *Euploea core amymone* (Godart, 1819) 幻紫斑蝶
♂. KAOHSIUNG CITY, Qijin, Dongsha Is., 2/7. X. 2008 (Y. F. Hsu) (genitalia preparation JYL1025).
399. *Euploea camaralzeman cratis* Butler, 1866 白列紫斑蝶
♂. PENGHU Co., Xiyu, East Fort, 11. VI. 2014, reared from *Ficus microcarpa*, emgd. 14. VII. 2014, HSU 14E28 (C. W. Huang & J. Y. Liang) (genitalia preparation JYL1009).
400. *Idea leuconoe clara* (Butler, 1867) 大白斑蝶
♂. JILONG CITY, Zhongzheng, NTOU, 4. II. 2017, emgd. 3. IV. 2017, HSU 17B05 (L. Huang) (genitalia preparation JYL1003).



397



398



399



400

401. *Idea leuconoe kwashotoensis* (Sonan, 1928) 大白斑蝶 (綠島亞種)
♂. TAIDONG Co., Ludao, 28/29. VII. 2007 (T. W. Chen & Y. C. Lin) (genitalia preparation JYL1041).
402. *Telchinia issoria formosana* (Fruhstorfer, 1914) 苧麻細蝶
♂. MIAOLI Co., Taian, Dongguashan, 29. I. 2015 (L. Huang) (genitalia preparation JYL778).
403. *Telchinia issoria issoria* Hübner, [1819] 苧麻細蝶
♂. LIANJIANG Co., Nangan, Jinsha, 20. VII. 2013 (C. L. Huang, H. C. Huang & H. Y. Lee) (genitalia preparation JYL927).
404. *Argynnis paphia formosicola* Matsumura, 1927 綠豹蛺蝶
♂. HUALIAN Co., Xiulin, Xinbaiyang, 1600/1700m, 3. VII. 2008 (L. H. Wang) (genitalia preparation JYL1011).



401



402



403



404

405. *Argynnis hyperbius* (Linnaeus, 1763) 斐豹蛺蝶
♂. XINBEI CITY, Shiding, Ergeshan, 29. V. 2015 (R. Z. Chang) (genitalia preparation JYL776).
406. *Argynnis childreni* Gray, 1831 大豹蛺蝶
♂. LIANJIANG Co., Beigan, 19. XI. 2013, reared from *Viola* sp., emgd. 2/21. II. 2014, HSU 13L63(L. H. Wang & H. Y. Lee) (genitalia preparation JYL925).
407. *Phalanta phalantha* (Drury, [1773]) 珙蛺蝶
♂. TAIZHONG CITY, Wufeng, Xiangbi Road, 12. XII. 2015 (H. C. Huang) (genitalia preparation JYL867).
408. *Cupha erymanthis* (Drury, [1773]) 黃襟蛺蝶
♂. TAIPEI CITY, Zhongzheng, Taipei Botanical Garden, 8. X. 2018, emgd. 24. X. 2018 (L. Huang) (genitalia preparation JYL966).



405



406



407



408

409. *Neptis hylas luculenta* Fruhstorfer, 1907 豆環蛺蝶
♂. NANTOU Co., Renai, Huisun, 10. IX. 2010 (C. L. Huang) (genitalia preparation JYL848).
410. *Neptis hylas hylas* (Linnaeus, 1758) 豆環蛺蝶
♂. JINMEN Co., Jinhua, Shenshiqiao, 13. VIII. 2015 (L. Huang) (genitalia preparation JYL846).
411. *Neptis sappho formosana* Fruhstorfer, 1908 小環蛺蝶
♂. KAOHSIUNG CITY, Taoyuan, Southern Cross-Island Highway, 120K, 3. VII. 2015 (C. W. Huang) (genitalia preparation JYL857).
412. *Neptis soma tayalina* Murayama & Shimonoya, 1968 斷線環蛺蝶
♂. KAOHSIUNG CITY, Taoyuan, Southern Cross-Island Highway, 130K, 3. VII. 2015 (C. W. Huang) (genitalia preparation JYL841).



409



410



411



412

413. *Neptis soma ominicola* Fruhstorfer, 1908 斷線環蛺蝶
♂. LIANJIANG Co., Beigan, Qinbi, 16. IV. 2014 (Y. F. Hsu, H. C. Huang & C. L. Huang) (genitalia preparation JYL923).
414. *Neptis nata lutatia* Fruhstorfer, 1913 細帶環蛺蝶
♂. TAOYUAN CITY, Fuxing, Xuanyuan, 13. VII. 2015 (R. Z. Chang) (genitalia preparation JYL851).
415. *Neptis reducta* Fruhstorfer, 1908 無邊環蛺蝶
♂. TAOYUAN CITY, Fuxing, Sule, 14. VII. 2015 (L. Huang) (genitalia preparation JYL859).
416. *Neptis taiwana* Fruhstorfer, 1908 蓬萊環蛺蝶
♂. TAOYUAN CITY, Fuxing, Sule, 14. VII. 2015 (R. Z. Chang) (genitalia preparation JYL855).



413



414



415



416

417. *Neptis noyala ikedai* Shirôzu, 1952 流紋環蛺蝶
♂. NANTOU Co., Renai, Nanshanxi, 1000m, 27. V. 2012 (C. C. Lu, jr) (genitalia preparation JYL980).
418. *Neptis sankara shirakiana* Matsumura, 1929 眉紋環蛺蝶
♂. HUALIAN Co., Xiulin, Huoranting, 1. VI. 2019 (C. W. Huang) (genitalia preparation JYL912).
419. *Neptis sylvana esakii* Nomura, 1935 深山環蛺蝶
♂. KAOHSIUNG CITY, Taoyuan, Southern Cross-Island Highway, 135K, 3. VII. 2015 (C. W. Huang & T. Y. Liu) (genitalia preparation JYL971).
420. *Neptis hesione podarces* Nire, 1920 蓮花環蛺蝶
♂. NANTOU Co., Xinyi, Renlun Forest Trail, 7. I. 2011, reared from *Ficus sarmentosa*, emgd. 1. III. 2011, HSU 11A09 (L. H. Wang) (genitalia preparation JYL945).



417



418



419



420

421. *Neptis philyra splendens* Murayama, 1941 槭環蛺蝶
♂. TAOYUAN CITY, Fuxing, Xuanyuan, 4. VI. 2018 (L. Huang) (genitalia preparation JYL964).
422. *Neptis philyroides sonani* Murayama, 1941 鑲紋環蛺蝶
♂. TAOYUAN CITY, Fuxing, Baling, 26. V. 2015 (L. Huang) (genitalia preparation JYL852).
423. *Neptis ilos nirei* Nomura, 1935 奇環蛺蝶
♂. HUALIAN Co., Xiulin, Bilu, 30. VII. 2019 (C. W. Huang) (genitalia preparation JYL947).
424. *Neptis pryri jucundita* Fruhstorfer, 1908 黑星環蛺蝶
♂. PINGDONG Co., Chunri, Dahanshan, 2. IX. 2014 (C. L. Huang) (genitalia preparation JYL854).



421



422



423



424

425. *Pantoporia hordonia rihodona* (Moore, 1878) 金環蛺蝶
♂. TAIKONG Co., Beinan, Zhiben Forest Trail, 31. X. 2015 (L. Huang) (genitalia preparation JYL863).
426. *Limenitis sulphitia tricola* Fruhstorfer, 1908 殘眉線蛺蝶
♂. TAIPEI CITY, Neihu, Kaiyanshan, 21. VII. 2015 (R. Z. Chang) (genitalia preparation JYL826).
427. *Limenitis sulphitia sulphitia* (Cramer, [1779]) 殘眉線蛺蝶
♂. LIANJIANG Co., Beigan, Qinbi, 25. VI. 2019 (Y. Y. Lu) (genitalia preparation JYL994).
428. *Limenitis asura baelia* (Fruhstorfer, 1908) 白圈線蛺蝶
♂. TAIPEI CITY, Beitou, Menghuanhu, emgd. 18. VII. 2014 (genitalia preparation JYL953).



425



426



427



428



429. *Limenitis jina sauteri* (Fruhstorfer, 1913) 寬帶線蛺蝶
♂. TAOYUAN CITY, Fuxing, Kayilan, 580m, 13. VII. 2016 (L. Huang & H. C. Huang) (genitalia preparation JYL995).
430. *Limenitis fortuna kodahirai* (Sonan, 1938) 幻紫線蛺蝶
♂. TAOYUAN CITY, Fuxing, Northern Cross-Island Highway, 55K, 16. V. 2015 (C. W. Huang & T. Y. Liu) (genitalia preparation JYL1020).
431. *Limenitis dudu jinamitra* Fruhstorfer, 1908 紫俳線蛺蝶
♂. TAIPEI CITY, Neihu, Kaiyanshan, 22. VII. 2015 (R. Z. Chang) (genitalia preparation JYL865).
432. *Athyma perius* (Linnaeus, 1758) 玄珠帶蛺蝶
♂. TAIZHONG CITY, Fengyuan, Zhongzheng Park, 1. VIII. 2015 (L. Huang) (genitalia preparation JYL781).



429



430



431



432



433. *Athyma selenophora laela* (Fruhstorfer, 1908) 異紋帶蛺蝶
♂. TAIPEI CITY, Wenshan, Gongguan campus, NTNU, 1. V. 2011 (genitalia preparation JYL955).
434. *Athyma cama zoroastres* Butler, 1877 雙色帶蛺蝶
♂. MIAOLI Co., Sanyi, 7. VI. 2015 (L. Huang) (genitalia preparation JYL771).
435. *Athyma opalina hirayamai* (Matsumura, 1935) 流帶蛺蝶
♂. HUALIAN Co., Xiulin, Huoranting, 3. IV. 2019 (C. W. Huang) (genitalia preparation JYL968).
436. *Abrota ganga formosana* Fruhstorfer, 1909 璫蛺蝶
♂. XINBEI CITY, Wulai, Baoqing Temple, 10 VIII. 2015 (L. Huang) (genitalia preparation JYL775).



433



434



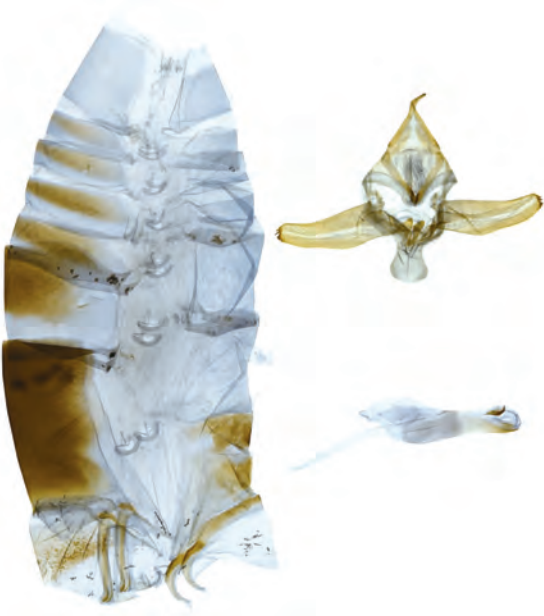
435



436



437. *Euthalia irrubescens fulguralis* (Matsumura, 1909) 紅玉翠蛺蝶
♂. NANTOU Co., Renai, Huisun, 4. IV. 2021, reared from *Scurrula* sp., emgd. 5. VI. 2021, HSU 21D14 (Z. L. Chen, K. Y. Chen, M. H. Wu & Y. Q. Yeh) (genitalia preparation JYL1040).
438. *Euthalia phemius* (Doubleday, [1848]) 尖翅翠蛺蝶
♂. JILONG CITY, Zhongshan, Wuqiaotou, 1. XI. 2019, reared from *Mangifera indica*, emgd. 26. XI. 2019, HSU 19L2 (K. L. Chen, H. C. Huang, Y. F. Hsu & C. C. Lu, jr) (genitalia preparation JYL1005).
439. *Euthalia kosempona* Fruhstorfer, 1908 甲仙綠蛺蝶
♂. XINBEI CITY, Wulai, Badaoershan, 21. VII. 2011 (L. H. Wang) (genitalia preparation JYL989).
440. *Euthalia malapana* Shirôzu & Chung, 1958 馬拉巴翠蛺蝶
♂. TAIZHONG CITY [= TAIZHONG Co.], Heping, Shishanxi, VIII. 1988 (C. K. La) (genitalia preparation JYL1030).



437



438



439



440

441. *Euthalia formosana* Fruhstorfer, 1908 臺灣翠蛺蝶
♂. KAOHSIUNG CITY, Taoyuan, Laonongxi Forest Trail, 7K, 7. VI. 2015 (C. W. Huang) (genitalia preparation JYL789).
442. *Euthalia insulae* Hall, 1930 窄帶翠蛺蝶
♂. KAOHSIUNG CITY, Taoyuan, Southern Cross-Island Highway, 130K, 4. VII. 2015 (C. W. Huang) (genitalia preparation JYL793).
443. *Dichorragia nesimachus formosanus* Fruhstorfer, 1909 流星蛺蝶
♂. XINBEI CITY, Bali, Guanyinshan, 400/450m, 28. IV. 2011 (Z. H. Yen) (genitalia preparation JYL1045).
444. *Timelaea albescens formosana* Fruhstorfer, 1908 白裳貓蛺蝶
♂. TAOYUAN CITY, Fuxing, Sule, 2. VII. 2015 (L. Huang) (genitalia preparation JYL881).



441



442



443



444

445. *Chitoria chrysolora* (Fruhstorfer, 1908) 金鎧蛺蝶
♂. TAOYUAN CITY, Fuxing, Xuanyuan, 14. VII. 2015 (R. Z. Chang) (genitalia preparation JYL783).
446. *Chitoria ulupi arakii* Naritomi, 1959 武鎧蛺蝶
♂. HUALIAN Co., Xiulin, Bilu, 15/16. VII. 2019 (C. W. Huang) (genitalia preparation JYL975).
447. *Helcyra plesseni* (Fruhstorfer, 1913) 普氏白蛺蝶
♂. TAIZHONG CITY, Heping, Shaolai Trail, 30. IX. 2018 (L. Huang) (genitalia preparation JYL785).
448. *Helcyra superba takamukui* Matsumura, 1919 白蛺蝶
♂. PINGDONG Co., Chunri, Qijia, 350m, 27. VII. 2018 (Y. T. Chung) (genitalia preparation JYL1014).



445



446



447



448

449. *Sephisa chandra androdamas* Fruhstorfer, 1908 燦蛺蝶
♂. TAIPEI CITY, Beitou, Datunshan, 6. VII. 2016 (L. Huang) (genitalia preparation JYL874).
450. *Sephisa daimio* Matsumura, 1910 臺灣燦蛺蝶
♂. TAOYUAN CITY, Fuxing, Northern Cross-Island Highway, 20. VI. 2015 (W. J. Lin) (genitalia preparation JYL940).
451. *Hestina assimilis formosana* (Moore, 1895) 紅斑脈蛺蝶
♂. HUALIAN Co., Xiulin, Huoranting, 23. VI. 2020 (C. W. Huang) (genitalia preparation JYL944).
452. *Hestina assimilis assimilis* (Linnaeus, 1758) 紅斑脈蛺蝶
♂. JINMEN Co., Jinsha, Ronghu Dam, 15. VIII. 2015, reared from *Celtis sinensis*, HSU 15H47 (L. Huang) (genitalia preparation JYL797).



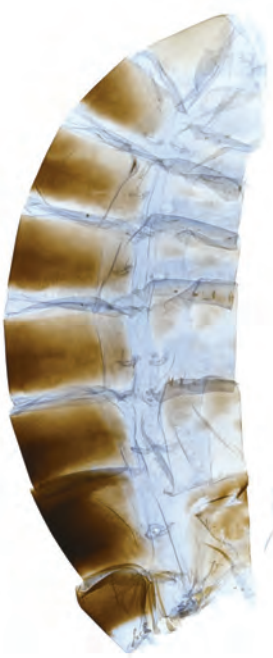
449



450



451



452

453. *Sasakia charonda formosana* Shirôzu, 1963 大紫蛺蝶
♂. TAOYUAN CITY, Fuxing, Zhongbaling, 4. VI. 2015 (H. C. Huang) (genitalia preparation JYL873).
454. *Ariadne ariadne pallidior* (Fruhstorfer, 1899) 波蛺蝶
♂. JINMEN Co., Jincheng, Shuitou, 15. VIII. 2015 (L. Huang) (genitalia preparation JYL770).
455. *Cyrestis thyodamas formosana* Fruhstorfer, 1898 網絲蛺蝶
♂. JILONG CITY, NTOU, 5. II. 2017, emgd. 27. II. 2017, HSU 17B04 (L. Huang) (genitalia preparation JYL948).
456. *Cyrestis thyodamas chinensis* Martin, 1903 網絲蛺蝶
♂. LIANJIANG Co., Beigan, Leishan, 22. VII. 2020 (Y. F. Hsu & H. C. Huang) (genitalia preparation JYL786).



453



454

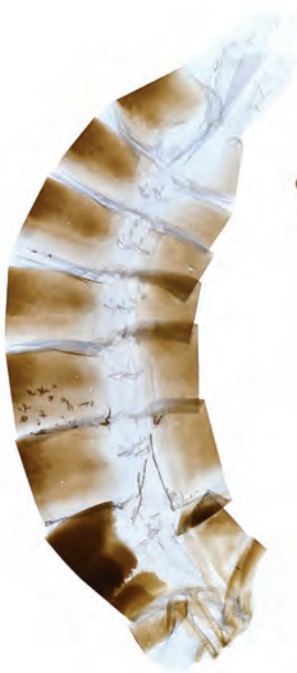


455



456

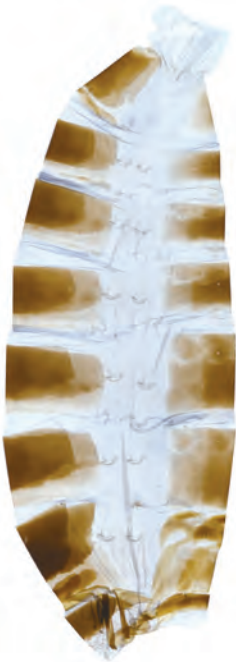
457. *Junonia almana* (Linnaeus, 1758) 眼蛺蝶
♂. PENGHU Co., Magong, Anyihu, 12. VI. 2014 (J. Y. Liang & C. W. Huang)
(genitalia preparation JYL798).
458. *Junonia lemonias aenaria* (Fruhstorfer, 1912) 鱗紋眼蛺蝶
♂. YUNLIN Co., Douliu, Hushan Dam, 12. XII. 2015 (L. Huang) (genitalia
preparation JYL803).
459. *Junonia orithya* (Linnaeus, 1758) 青眼蛺蝶
♂. XINBEI CITY, Ruifang, Sandiaoling, 12. IX. 2015, emgd. 11. X. 2015 (L.
Huang) (genitalia preparation JYL767).
460. *Junonia iphita* (Cramer, [1779]) 黯眼蛺蝶
♂. XINBEI CITY, Ruifang, Sandiaoling, 12. IX. 2015 (L. Huang) (genitalia
preparation JYL801).



457



458



459



460



461. *Junonia atlites* (Linnaeus, 1763) 波紋眼蛺蝶

♂. JINMEN Co., Jinhu, Taiwushan, 14. VIII. 2015, emgd. 7. IX. 2015 (L. Huang) (genitalia preparation JYL800).

462. *Kallima inachus formosana* Fruhstorfer, 1913 枯葉蝶

♂. MIAOLI Co., Sanyi, Zhentoushan, 13. IX. 2015 (L. Huang) (genitalia preparation JYL773).

463. *Yoma sabina podium* Tsukada, 1985 黃帶隱蛺蝶

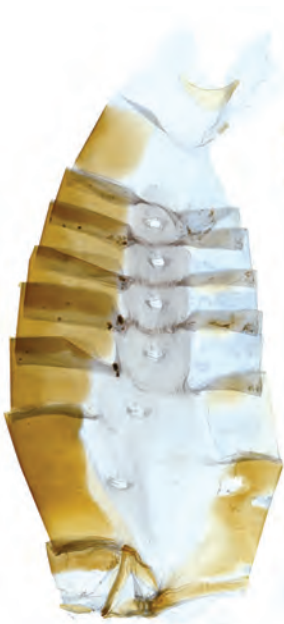
♂. JIAYI Co., Dapu, Qingyun Spring, 21. IV. 2020 (Y. F. Hsu) (genitalia preparation JYL939).

464. *Vanessa indica* (Herbst, 1794) 大紅蛺蝶

♂. TAIPEI CITY, Beitou, Qixing Park, 15. VI. 2015 (L. Huang) (genitalia preparation JYL763).



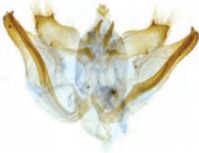
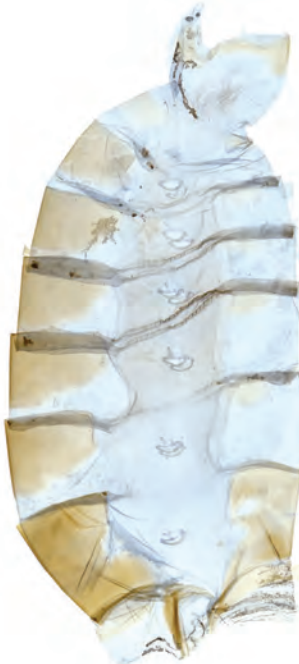
461



462



463



464

465. *Vanessa cardui* (Linnaeus, 1758) 小紅蛺蝶
♂. TAIPEI CITY, Neihu, Dagouxi, 7. XI. 2017 (L. Huang) (genitalia preparation JYL996).
466. *Polygonia c-album asakurai* Nakahara, 1920 突尾鉤蛺蝶
♂. XINZHU Co., Jianshi, Lidongshan, 11. VI. 2018, emgd. 23. VI. 2018 (L. Huang) (genitalia preparation JYL990).
467. *Polygonia c-aureum lunulata* Esaki & Nakahara, 1924 黃鉤蛺蝶
♂. MIAOLI Co., Sanyi, 7. VI. 2015 (L. Huang) (genitalia preparation JYL869).
468. *Polygonia c-aureum c-aureum* (Linnaeus, 1758) 黃鉤蛺蝶
♂. LIANJIANG Co., Beigan, Leishan, 22. VII. 2020 (Y. F. Hsu) (genitalia preparation JYL952).



465



466



467



468

469. *Kaniska canace drilon* (Fruhstorfer, 1908) 琉璃蛺蝶
♂. TAOYUAN CITY, Fuxing, Baling, 9. V. 2015 (L. Huang) (genitalia preparation JYL806).
470. *Kaniska canace canace* (Linnaeus, 1763) 琉璃蛺蝶
♂. JINMEN Co., Jinhu, Botanical Garden, 5. XI. 2015 (L. Huang) (genitalia preparation JYL759).
471. *Nymphalis xanthomelas formosana* (Matsumura, 1925) 緋蛺蝶
♂. HUALIAN Co., Xiulin, Bilu/Xinbaiyang, 9. VII. 2018 (C. W. Huang) (genitalia preparation JYL905).
472. *Symbrenthia lilaea formosanus* Fruhstorfer, 1908 散紋盛蛺蝶
♂. YILAN Co., Nanao, Dabaishan, 21. VII. 2016 (L. Huang) (genitalia preparation JYL877).



469



470



471



472



473. *Symbrenthia lilaea lunica* Bascombe, Johnston & Bascombe, 1999 散紋盛蛺蝶 (華南亞種)
♂. TAINAN CITY, Dongshan, Kantoushan, 18. IX. 2018 (Y. F. Hsu) (genitalia preparation JYL879).
474. *Symbrenthia brabira scatinia* Fruhstorfer, 1908 黃豹盛蛺蝶
♂. MIAOLI Co., Sanyi, Guandaoshan, 4. VII. 2015 (L. Huang) (genitalia preparation JYL760).
475. *Hypolimnas misippus* (Linnaeus, 1764) 雌擬幻蛺蝶
♂. XINBEI CITY, Yingge, 8. VII. 2015, emgd. 7. VIII. 2015 (H. C. Huang) (genitalia preparation JYL754).
476. *Hypolimnas bolina kezia* (Butler, 1877) 幻蛺蝶
♂. MIAOLI Co., Sanyi, 7. VI. 2015, emgd. 29. VI. 2015 (L. Huang) (genitalia preparation JYL755).



473



474



475

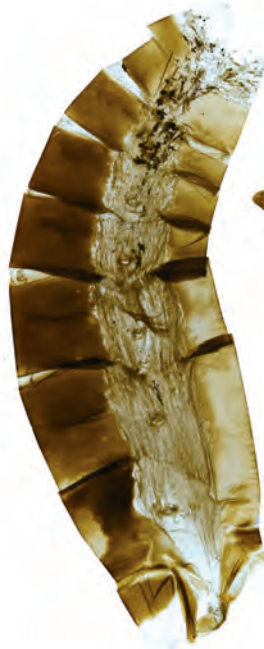


476

477. *Hypolimnas anomala truentus* Fruhstorfer, 1912 端紫幻蛺蝶
♂. TAIDONG Co., Ludao, 25/27. IX. 2004 (Y. F. Hsu & H. C. Huang) (genitalia preparation JYL992).
478. *Calinaga formosana* Fruhstorfer, 1908 臺灣絹蛺蝶
♂. TAOYUAN CITY, Fuxing, Gaoyi, 600m, 5. IV. 2017 (L. Huang) (genitalia preparation JYL998).
479. *Charaxes eudamippus formosanus* (Rothschild, 1899) 雙尾蛺蝶
♂. PINGDONG Co., Wutai, Ailiaobeixi/Bayouxi, 500/900m, 14/17. III. 2008 (Y. F. Hsu & H. C. Huang) (genitalia preparation JYL1008).
480. *Charaxes narcaea meghaduta* (Fruhstorfer, 1908) 小雙尾蛺蝶
♂. XINBEI CITY, Wulai, Baoqing Temple, 17. VIII. 2015 (Y. H. Lin & C. W. Huang) (genitalia preparation JYL871).



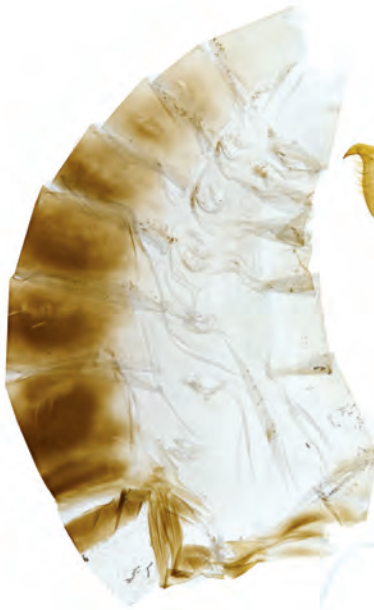
477



478



479



480



481. *Charaxes bernardus* (Fabricius, 1793) 玉帶螫蛺蝶
♂. LIANJIANG Co., Beigan, Jinsha, 18. XI. 2013, reared from *Cinnamomum camphora*, emgd. 30. XII. 2013 (L. H. Wang & H. Y. Lee) (genitalia preparation JYL1047).
482. *Stichophthalma howqua formosana* Fruhstorfer, 1908 箭環蝶
♂. TAOYUAN CITY, Fuxing, Xuanyuan, 29. VI. 2015 (L. Huang) (genitalia preparation JYL876).
483. *Faunis eumeus* (Drury, 1770) 串珠環蝶
♂. JILONG CITY, Longgang Trai, 11. IV. 2011, reared from *Heterosmilax japonica* [= *Smilax bockii*], emgd. 27. V. 2010, HSU 10D10 (C. L. Huang, C. K. Wang & Y. T. Lin) (genitalia preparation JYL794).
484. *Discophora sondaica tulliana* Stichel, 1905 方環蝶
♂. TAIPEI CITY, Shilin, Ciwu Temple, 22. VI. 2015 (L. Huang) (genitalia preparation JYL788).



481



482



483



484

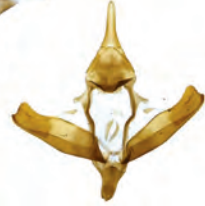
485. *Ypthima baldus zodina* Fruhstorfer, 1911 小波眼蝶
♂. XINBEI CITY, Ruifang, Sandiaoling, 12. IX. 2015 (L. Huang) (genitalia preparation JYL884).
486. *Ypthima okurai* Okano, 1962 大藏波眼蝶
♂. TAIDONG Co., Haiduan, Wulu Forest Trail, 30. IV. 2019 (L. H. Wang) (genitalia preparation JYL920).
487. *Ypthima tappana* Matsumura, 1909 達邦波眼蝶
♂. PINGDONG Co., Shizi, Shouka, 8. V. 2020 (Y. F. Hsu) (genitalia preparation JYL897).
488. *Ypthima atra taiwana* Lamas, 2010 大波眼蝶
♂. TAIDONG Co., Beinan, Zhiben Forest Trail, 21. X. 2015 (L. Huang) (genitalia preparation JYL893).



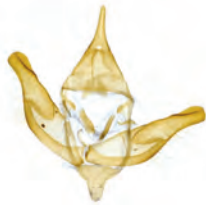
485



486



487



488



489. *Ypthima yamanakai* Sonan, 1938 白漪波眼蝶
♂. KAOHSIUNG CITY, Taoyuan, Southern Cross-Island Highway, 130K, 3. VII. 2015 (C. W. Huang) (genitalia preparation JYL886).
490. *Ypthima angustipennis* Takahashi, 2000 狹翅波眼蝶
♂. TAIDONG Co., Haiduan, Lido. 7. VI. 2020 (J. Y. Liang) (genitalia preparation JYL918).
491. *Ypthima multistriata* Butler, 1883 密紋波眼蝶
♂. TAIPEI CITY, Nangang, Academia Sinica, 23. IV. 2014 (H. C. Huang) (genitalia preparation JYL894).
492. *Ypthima esakii esakii* Shirôzu, 1960 江崎波眼蝶
♂. YILAN Co., Nanao, Dabaishan, 21. IV. 2016 (L. Huang) (genitalia preparation JYL888).



489



490



491



492

493. *Ypthima esakii wangi* Lee, 1998 江崎波眼蝶北部亞種
♂. XINBEI CITY [= TAIPEI Co.], Ruifang, Nanya, 9. X. 1998 (Y. F. Hsu) (genitalia preparation JYL978).
494. *Ypthima akragas* Fruhstorfer, 1911 白帶波眼蝶
♂. YILAN Co., Nanao, Dabaishan, 12. VI. 2014 (L. H. Wang) (genitalia preparation JYL882).
495. *Ypthima praenubila kanonis* Matsumura, 1929 巨波眼蝶 (臺灣北部亞種)
♂. TAIPEI CITY, Beitou, Menghuan Lake, 8. VI. 2013 (C. L. Huang) (genitalia preparation JYL896).
496. *Ypthima praenubila neobilia* Murayama, 1980 巨波眼蝶 (臺灣中南部亞種)
♂. PINGDONG Co., Chunri, Dahanshan, 1100/1200m, 8. VIII. 2020 (Y. F. Hsu) (genitalia preparation JYL903).



493



494



495



496

497. *Ypthima norma norma* Westwood, 1851 罕波眼蝶
♂. LIANJIANG Co., Beigan, Daqiu, 6. IX. 2014 (C. L. Huang & H. Y. Lee)
(genitalia preparation JYL934).
498. *Ypthima wenlungi* Takahashi, 2007 文龍波眼蝶
♂. KAOHSIUNG CITY [= KAOHSIUNG Co.], Taoyuan, Fenggangshan,
1300m, 24. IX. 2007 (Y. F. Hsu & G. P. Su) (genitalia preparation JYL977).
499. *Ypthima lisandra* (Cramer, [1780]) 圓翅波眼蝶
♂. JINMEN Co., Jinhua, Jianhua, 20. VI. 2010, reared from *Paspalum conjugatum*, emgd. 28. VII. 2010, HSU 10F29 (C. K. Wang) (genitalia preparation JYL936).
500. *Palaeonympha opalina macrophthalmia* Fruhstorfer, 1911 古眼蝶
♂. TAOYUAN CITY, Fuxing, Ronghua, 9. IV. 2016 (L. Huang) (genitalia preparation JYL861).



497



498



499

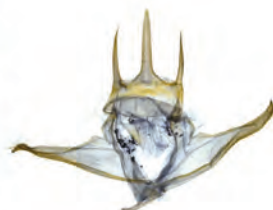


500

501. *Zophoessa dura neoclydes* (Fruhstorfer, 1909) 大幽眼蝶
♂. TAIDONG Co., Haiduan, Wulu Forest Trail, 30. IV. 2019 (L. H. Wang) (genitalia preparation JYL902).
502. *Zophoessa siderea kanoi* (Esaki & Nomura, 1937) 圓翅幽眼蝶
♂. XINBEI CITY [= TAIPEI Co.], Sanxia, Beichatianshan, 1500/1727m, 25/26. V. 2002 (C. L. Huang, L. H. Wang & C. R. Chen) (genitalia preparation JYL1018).
503. *Zophoessa niitakana* (Matsumura, 1906) 玉山幽眼蝶
♂. NANTOU Co., Renai, Songquangang, 16. VIII. 2018 (C. W. Huang) (genitalia preparation JYL914).
504. *Lethe europa pavida* Fruhstorfer, 1908 長紋黛眼蝶
♂. TAIDONG Co., Beinan, Zhiben Forest Trail, 31. X. 2015 (H. C. Huang) (genitalia preparation JYL813).



501



502



503



504

505. *Lethe rohria daemoniaca* Fruhstorfer, 1908 波紋黛眼蝶
♂. TAIPEI CITY, Wenshan, Gongguan campus, NTNU, 17. VI. 2018 (C. J. Chang) (genitalia preparation JYL822).
506. *Lethe verma cintamani* Fruhstorfer, 1909 玉帶黛眼蝶
♂. HUALIAN Co., Xiulin, Bilu, 6. VII. 2015 (L. Huang) (genitalia preparation JYL823).
507. *Lethe hyrania formosana* Fruhstorfer, 1908 深山黛眼蝶
♂. XINBEI CITY, Sanzhi, Eiziping, 15. VI. 2011 (C. L. Huang) (genitalia preparation JYL821).
508. *Lethe chandica ratnacri* Fruhstorfer, 1908 曲紋黛眼蝶
♂. HUALIAN Co., Guangfu, Taibawang Elementary School, 6. VI. 2018 (J. Y. Liang) (genitalia preparation JYL810).



505



506



507



508

509. *Lethe mataja* Fruhstorfer, 1908 臺灣黛眼蝶
♂. PINGDONG Co., Chunri, Dahan Forest Trail, 21K+, 20. VII. 2020 (C. W. Huang, C. J. Chang & J. Y. Liang) (genitalia preparation JYL921).
510. *Lethe christophi hanako* Fruhstorfer, 1908 柯氏黛眼蝶
♂. HUALIAN Co., Xiulin, Bilu, 5. VII. 2015 (L. Huang) (genitalia preparation JYL811).
511. *Lethe butleri periscelis* (Fruhstorfer, 1908) 巴氏黛眼蝶
♂. NANTOU Co., Renai, Wushe, 18. VIII. 2018 (L. Huang) (genitalia preparation JYL965).
512. *Lethe gemina zaitha* Fruhstorfer, 1914 孿斑黛眼蝶
♂. NANTOU Co., Renai, Beidongyanshan, 1600m, 17. IX. 2018 (Y. F. Hsu) (genitalia preparation JYL1022).



509



510



511



512

513. *Neope pulaha didia* (Fruhstorfer, 1909) 黃斑蔭眼蝶
♂. HUALIAN Co., Xiulin, Bilu, 5. VII. 2015 (L. Huang) (genitalia preparation JYL845).
514. *Neope bremeri watanabei* Matsumura, 1909 布氏蔭眼蝶
♂. PINGDONG Co., Wutai, Xiaoguihu Forest Trail, 0K, 2. VI. 2014, reared from *Miscanthus* sp., emgd. 18. VII. 2014 (Y. H. Lin, L. H. Wang, C. L. Huang & J. Y. Liang) (genitalia preparation JYL842).
515. *Neope arandii lacticolora* (Fruhstorfer, 1908) 白斑蔭眼蝶
♂. YILAN Co., Nanao, Dabaishan, 1260m, 21. IV. 2016 (L. Huang) (genitalia preparation JYL991).
516. *Neope muirheadii nagasawae* Matsumura, 1919 褐翅蔭眼蝶
♂. XINBEI CITY, Bali, Guanyinshan, 16. VI. 2011 (J. H. Yen) (genitalia preparation JYL843).



513



514



515



516



517. *Mycalesis francisca formosana* Fruhstorfer, 1908 眉眼蝶

♂. XINBEI CITY, Shimen, Qingshan Spring, 30. III. 2015 (genitalia preparation JYL834).

518. *Mycalesis gotama nanda* Fruhstorfer, 1908 稻眉眼蝶

♂. TAIPEI CITY, Shilin, Pingding Ancient Canal, 1. VI. 2017 (L. Huang) (genitalia preparation JYL932).

519. *Mycalesis kagina* Fruhstorfer, 1908 嘉義眉眼蝶

♂. TAINAN Co., Dongshan, Kantoushan, 26. IV. 2016 (L. Huang) (genitalia preparation JYL837).

520. *Mycalesis perseus blasius* (Fabricius, 1798) 曲斑眉眼蝶

♂. KAOHSIUNG CITY, Tianliao, 14. VI. 2013 (Y. F. Hsu) (genitalia preparation JYL916).



517



518



519



520

521. *Mycalesis mucianus zonatus* Matsumura, 1909 切翅眉眼蝶
♂. TAIPEI CITY, Shilin, Zhishanyan, 8. V. 2015 (L. Huang) (genitalia preparation JYL838).
522. *Mycalesis mineus* (Linnaeus, 1758) 小眉眼蝶
♂. JIAYI Co., Lantan campus, NCYU, 30. VII. 2016 (L. Huang) (genitalia preparation JYL960).
523. *Mycalesis mineus* (Linnaeus, 1758) 小眉眼蝶
♂. JINMEN Co., Jinsha, Longlinghu, 4. XI. 2013 (genitalia preparation JYL962).
524. *Telinga mara* (Fruhstorfer, 1908) 淺色眉眼蝶
♂. NANTOU Co., Xinyi, Heshhe, 6. VII. 2015 (L. Huang) (genitalia preparation JYL835).



521



522



523



524

525. *Minois nagasawae* (Matsumura, 1906) 永澤蛇眼蝶

♂. TAIDONG Co., Haiduan, Xiangyang, 19. VIII. 2008 (genitalia preparation JYL832).

526. *Melanitis leda* (Linnaeus, 1758) 暮眼蝶

♂. MIAOLI Co., Sanyi, 13. IX. 2015 (L. Huang) (genitalia preparation JYL828).

527. *Melanitis phedima polishana* Fruhstorfer, 1908 森林暮眼蝶

♂. YILAN Co., Nanao, Dabaishan, 21. VII. 2016 (L. Huang) (genitalia preparation JYL830).

528. *PentHEMA formosanum* (Rothschild, 1898) 臺灣斑眼蝶

♂. MIAOLI Co., Sanyi, Guandaoshan, 4. VII. 2015 (L. Huang) (genitalia preparation JYL866).



525



526



527



528

529. *Elymnias hypermnestra hainana* Moore, 1878 藍紋鋸眼蝶

♂. XINBEI CITY, Ruifang, Sandiaoling, 12. IX. 2015 (L. Huang) (genitalia preparation JYL758).



529



FEMALE GENITALIA

Note. Scale bars represent 1 mm.

530. *Libythea lepita formosana* Fruhstorfer, 1909 東方喙蝶

♀. KAOHSIUNG CITY, Taoyuan, Baoshan, Erjitan, 27. VI. 2015 (R. Z. Chang) (genitalia preparation JYL825).

531. *Danaus plexippus* (Linnaeus, 1758) 帝王斑蝶

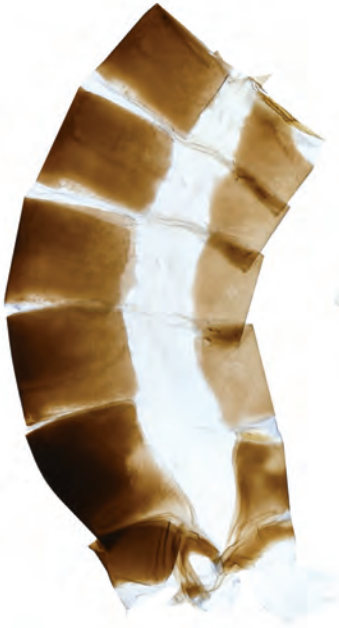
♀. USA: TX: Harris Co., Houston, IV. 2007, reared from *Asclepias curassavica*, emgd., 5. V. 2007, HSU 07D7 (H. H. Chuah) (genitalia preparation JYL1034).

532. *Danaus genutia* (Cramer, [1779]) 虎斑蝶

♀. TAINAN CITY, Xinhua, Zhiyi Forest Area, 28. X. 2016 (L. Huang) (genitalia preparation JYL982).

533. *Danaus melanippus edmondii* (Bougainville, 1837) 白虎斑蝶

♀. PHILIPPINES: BATANES PROV., Sabtang, Malakdang, 10. IV. 2013 (Y. F. Hsu) (genitalia preparation JYL1035).



530



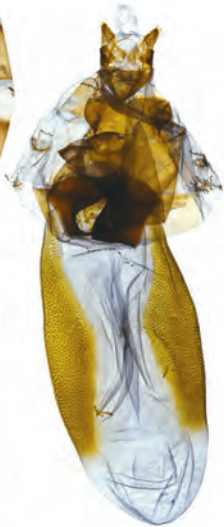
531



532



533



534. *Danaus chrysippus* (Linnaeus, 1758) 金斑蝶

♀. TAIPEI CITY, Wenshan, Gongguan campus, NTNU, 24. IX. 2015, emgd. 1. X. 2015 (L. Huang) (genitalia preparation JYL730).

535. *Tirumala limniace limniace* (Cramer, [1775]) 淡紋青斑蝶

♀. XINZHU Co., Beipu, 12. X. 2015, emgd. 18. XI. 2015 (H. C. Huang) (genitalia preparation JYL751).

536. *Tirumala septentrionis* (Butler, 1874) 小紋青斑蝶

♀. XINBEI CITY, Ruifang, Sandiaoling, 12. IX. 2015 (L. Huang) (genitalia preparation JYL748).

537. *Parantica aglea maghaba* (Fruhstorfer, 1909) 絹斑蝶

♀. JIAYI Co., Fanlu, Chukou, 300m, 11. X. 2004 (Y. F. Hsu) (genitalia preparation JYL1043).



534



535



536



537

538. *Parantica swinhoei* (Moore, 1883) 斯氏絹斑蝶

♀. PINGDONG Co., Chunri, Dahanshan, 2. IX. 2014 (C. L. Huang) (genitalia preparation JYL745).

539. *Parantica sita niponica* (Moore, 1883) 大絹斑蝶

♀. XINBEI CITY, Wulai, Fushan, 400m, 19. IV. 2017 (L. Huang) (genitalia preparation JYL1001).

540. *Ideopsis similis* (Linnaeus, 1758) 旖斑蝶

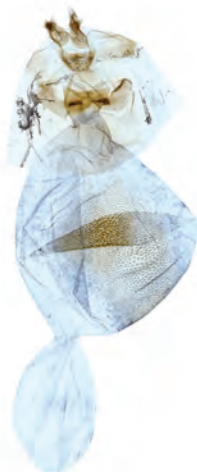
♀. TAINAN CITY, Zuozhen, Caoshan, 18. IX. 2018 (Y. F. Hsu) (genitalia preparation JYL753).

541. *Euploea sylvester swinhoei* Wallace, 1866 雙標紫斑蝶

♀. TAIPEI CITY, Shilin, Zhishanyan, 1. VI. 2015 (L. Huang) (genitalia preparation JYL731).



538



539



540



541



542. *Euploea midamus* (Linnaeus, 1758) 藍點紫斑蝶
♀. JINEMN Co., Jinning, Zhongshan Forest, 5. XI. 2015 (C. W. Huang) (genitalia preparation JYL741).
543. *Euploea mulciber barsine* Fruhstorfer, 1904 異紋紫斑蝶
♀. TAIPEI CITY, Beitou, Junjianyan, 11. VI. 2015, emgd. 29. VI. 2015 (H. C. Huang) (genitalia preparation JYL736).
544. *Euploea phaenareta juvia* Fruhstorfer, 1908 大紫斑蝶
♀. THAILAND: PHUKET PROV., Rt4020, Mu Ban Phuket Hopeland, 24. VIII. 2016, reared from *Cerbera* sp., emgd. 14. IX. 2016, HSU 16H50 (Y. F. Hsu & H. C. Huang) (genitalia preparation JYL1016).
545. *Euploea eunice hobsoni* (Butler, 1877) 圓翅紫斑蝶
♀. TAIPEI CITY, Wenshan, Gongguan campus. NTNU, 14. V. 2020 (Y. M. Hsu) (genitalia preparation JYL734).



542



543



544



545

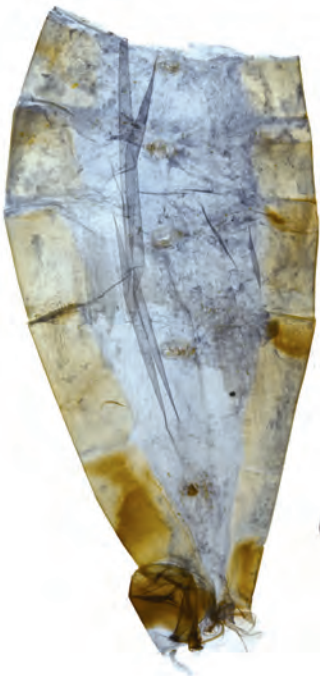
546. *Euploea tulliolus koxinga* Fruhstorfer, 1908 小紫斑蝶
♀. PINGDONG Co., Checheng, Sichongxi, 24. II. 2014 (C. L. Huang) (genitalia preparation JYL739).
547. *Euploea core amymone* (Godart, 1819) 幻紫斑蝶
♀. KAOHSIUNG CITY, Qijin, Dongsha Is., 2/7. X. 2008, reared from *Nerium indicum* [= *Nerium oleander*], emgd. 24. X. 2008, HSU 08K5(Y. F. Hsu) (genitalia preparation JYL1024).
548. *Euploea camaralzeman cratis* Butler, 1866 白列紫斑蝶
♀. PENGHU Co., Xiyu, East Fort, 11. VI. 2014 (C. W. Huang & J. Y. Liang) (genitalia preparation JYL1010).
549. *Idea leuconoe clara* (Butler, 1867) 大白斑蝶
♀. JILONG CITY, Zhongzheng, NTOU, 4. II. 2017, emgd. 28. III. 2017, HSU 17B05 (L. Huang) (genitalia preparation JYL1004).



546



547



548



549



550. *Idea leuconoe kwashotoensis* (Sonan, 1928) 大白斑蝶 (綠島亞種)
♀. TAIDONG Co., Ludao, 8/10. IX. 2009 (C. L. Huang & Y. C. Lin) (genitalia preparation JYL1042).
551. *Telchinia issoria formosana* (Fruhstorfer, 1914) 苧麻細蝶
♀. TAIZHONG CITY [= TAIZHONG Co.], Heping, Shangguguan, 800/900m, 28. VII. 2007, reared from *Debregeasia orientalis*, emgd. 3. VIII. 2007, HSU 07G41 (Y. F. Hsu) (genitalia preparation JYL1050).
552. *Argynnis paphia formosicola* Matsumura, 1927 綠豹蛺蝶
♀. HUALIAN Co., Xiulin, Guanyuan, 8. IX. 2020, reared from *Viola* sp., emgd. 13. III. 2021, HSU 20J4 (Y. F. Hsu) (genitalia preparation JYL1012).
553. *Argynnis hyperbius* (Linnaeus, 1763) 斐豹蛺蝶
♀. TAIPEI CITY, Beitou, Datunshan, 9. IX. 2014 (L. Huang) (genitalia preparation JYL777).



550



551



552



553

554. *Argynnis childreni* Gray, 1831 大豹蛺蝶

♀. LIANJIANG Co., Beigan, 19. XI. 2013, reared from *Viola* sp., emgd. 2/21.
II. 2014, HSU 13L63(L. H. Wang & H. Y. Lee) (genitalia preparation JYL926).

555. *Phalanta phalantha* (Drury, [1773]) 珙蛺蝶

♀. PINGDONG Co., Checheng, Sichongxi, 24. II. 2014 (C. L. Huang) (genitalia preparation JYL868).

556. *Cupha erymanthis* (Drury, [1773]) 黃襟蛺蝶

♀. TAIPEI CITY, Wenshan, Chanchushan, X. 2018, emgd. 14. X. 2018 (L. Huang) (genitalia preparation JYL984).

557. *Neptis hylas luculenta* Fruhstorfer, 1907 豆環蛺蝶

♀. TAIPEI CITY, Xinyi, Hushan, 8. IX. 2010 (C. L. Huang) (genitalia preparation JYL847).



554



555



556



557

558. *Neptis hylas hylas* (Linnaeus, 1758) 豆環蛺蝶
♀. JINMEN Co., Jinhu, Botanical Garden, 18. XI. 2013 (Y. F. Hsu) (genitalia preparation JYL922).
559. *Neptis sappho formosana* Fruhstorfer, 1908 小環蛺蝶
♀. NANTOU Co., Renai, Beidongyanshan, 1600m, 17. IX. 2018 (Y. F. Hsu) (genitalia preparation JYL858).
560. *Neptis soma tayalina* Murayama & Shimonoya, 1968 斷線環蛺蝶
♀. NANTOU Co., Renai, Beidongyanshan, 1600m, 17. IX. 2018 (Y. F. Hsu) (genitalia preparation JYL840).
561. *Neptis soma ominicola* Fruhstorfer, 1908 斷線環蛺蝶
♀. LIANJIANG Co., Beigan, Qinbi, 25. VI. 2019 (Y. Y. Lu) (genitalia preparation JYL839).



558



559



560



561

562. *Neptis nata lutatia* Fruhstorfer, 1913 細帶環蛺蝶

♀. XINBEI CITY, Shimen, Qingshan Spring, 30. III. 2015 (genitalia preparation JYL850).

563. *Neptis reducta* Fruhstorfer, 1908 無邊環蛺蝶

♀. TAIZHONG CITY, Heping, Guguan (Z. L. Chen) (genitalia preparation JYL860).

564. *Neptis taiwana* Fruhstorfer, 1908 蓬萊環蛺蝶

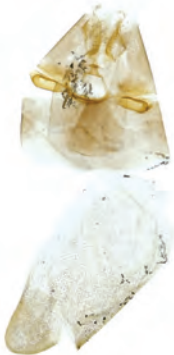
♀. TAIPEI CITY, Beitou, NYCU, 14. VI. 2015 (L. Huang) (genitalia preparation JYL856).

565. *Neptis noyala ikedai* Shirôzu, 1952 流紋環蛺蝶

♀. TAOYUAN CITY, Fuxing, Northern Cross-Island Highway, 56K, 30. IX. 2014, reared from *Castanopsis carlisii* [= *Castanopsis cuspidata* var. *carlesii*], emgd. 5. XII. 2014, HSU 14J88 (Y. M. Hsu & Y. F. Hsu) (genitalia preparation JYL981).



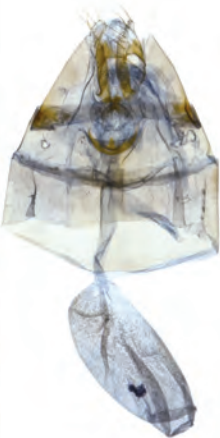
562



563



564



565



566. *Neptis sankara shirakiana* Matsumura, 1929 眉紋環蛺蝶

♀. TAOYUAN CITY, Fuxing, Kulushan, 8. VI. 2018 (C. W. Huang) (genitalia preparation JYL913).

567. *Neptis sylvana esakii* Nomura, 1935 深山環蛺蝶

♀. NANTOU Co., Renai, Hewang. 1600m, 22. VI. 2008 (R. K. Dong) (genitalia preparation JYL972).

568. *Neptis hesione podarces* Nire, 1920 蓮花環蛺蝶

♀. YILAN Co., Datong, Tuleng, 8. VIII. 2018 (L. H. Wang & C. W. Huang) (genitalia preparation JYL911).

569. *Neptis philyra splendens* Murayama, 1941 槭環蛺蝶

♀. TAOYUAN CITY, Fuxing, Dongyanshan, emgd. 20. IV. 2015 (X. Lee) (genitalia preparation JYL1031).



566



567



568



569



570. *Neptis philyroides sonani* Murayama, 1941 鑲紋環蛺蝶

♀. PINGDONG Co., Wutai, Yichangshan, 1100m, 23. III. 2010, reared from *Carpinus kawakamii*, emgd. 12. IV. 2010, HSU 10C26 (C. L. Huang) (genitalia preparation JYL1027).

571. *Neptis ilos nirei* Nomura, 1935 奇環蛺蝶

♀. HUALIAN Co., Xiulin, Bilu, 15/16. VII. 2019 (C. W. Huang) (genitalia preparation JYL946).

572. *Neptis pryeri jucundita* Fruhstorfer, 1908 黑星環蛺蝶

♀. PINGDONG Co., Chunri, Dahan Forest Trail, 15K, 5. VII. 2015 (C. W. Huang) (genitalia preparation JYL853)

573. *Pantoporia hordonia rihodona* (Moore, 1878) 金環蛺蝶

♀. KAOHSIUNG CITY, Taoyuan, Meishan, 27. X. 2016 (L. Huang) (genitalia preparation JYL986).



570



571



572



573

574. *Limenitis sulphitia tricola* Fruhstorfer, 1908 殘眉線蛺蝶
♀. TAIPEI CITY, Shilin, Pingding Ancient Canal, 15. VI. 2014 (L. Huang)
(genitalia preparation JYL827).
575. *Limenitis asura baelia* (Fruhstorfer, 1908) 白圈線蛺蝶
♀. XINBEI CITY, Pinglin, Shangde, 20. VIII. 2015 (C. W. Huang) (genitalia
preparation JYL768).
576. *Limenitis jina sauteri* (Fruhstorfer, 1913) 寬帶線蛺蝶
♀. XINZHU Co., Jianshi, Mamei, 1550m, 6. IX. 2005, reared from *Lonicera
hypoglauca*, emgd. 14/22. IX. 2005, HSU 05J22 (C. C. Lu) (genitalia preparation
JYL1028).
577. *Limenitis fortuna kodahirai* (Sonan, 1938) 幻紫線蛺蝶
♀. TAOYUAN CITY, Fuxing, Northern Cross-Island Highway, 14. VI. 2021,
reared from *Viburnum* sp., emgd. 20. VII. 2021, HSU 21F6 (Y. Q. Yeh) (genitalia
preparation JYL1021).



574



575



576



577



578. *Limenitis dudu jinamitra* Fruhstorfer, 1908 紫俳線蛺蝶

♀. TAIPEI CITY, Beitou, Sansheng Temple, 6. IV. 2009, reared from *Lonicera* sp., emgd. 8. V. 2009, HSU 09D13 (Y. F. Hsu, C. H. Lin, jr & M. S. Sun) (genitalia preparation JYL907).

579. *Athyma perius* (Linnaeus, 1758) 玄珠帶蛺蝶

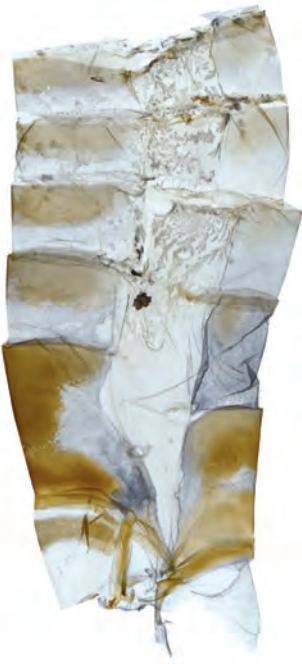
♀. HUALIAN Co., Fengbin, Baliwan, 29. VII. 2018 (J. Y. Liang) (genitalia preparation JYL782).

580. *Athyma selenophora laela* (Fruhstorfer, 1908) 異紋帶蛺蝶

♀. XINEBEI CITY [= TAIPEI Co.], Sanzhi, Erziping, 17. VIII. 2010 (C. L. Huang) (genitalia preparation JYL780).

581. *Athyma cama zoroastres* Butler, 1877 雙色帶蛺蝶

♀. NANTOU Co., Puli, Lingxiaodian, 14. VIII. 2019 (J. Y. Liang) (genitalia preparation JYL772).



578



579



580



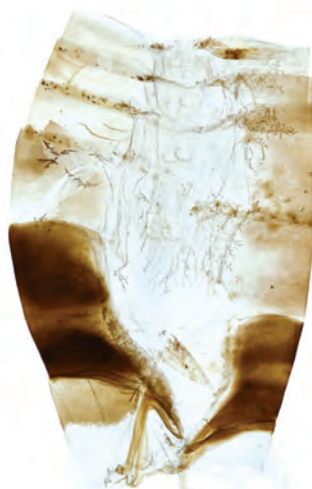
581



582. *Athyma opalina hirayamai* (Matsumura, 1935) 流帶蛺蝶
♀. TAIDONG Co., Haiduan, Liyuan, 1800m, 18/19. VI. 2020 (Y. F. Hsu & C. W. Huang) (genitalia preparation JYL969).
583. *Abrota ganga formosana* Fruhstorfer, 1909 璫蛺蝶
♀. TAOYUAN CITY, Fuxing, Northern Cross-Island Highway, 55.6K, 2. X. 2018 (C. W. Huang) (genitalia preparation JYL774).
584. *Euthalia irrubescens fulguralis* (Matsumura, 1909) 紅玉翠蛺蝶
♀. TAIZHONG CITY, Heping, Guguan, 10. VIII. 2018, emgd. 14. IX. 2018 (Z. L. Chen) (genitalia preparation JYL908).
585. *Euthalia phemius* (Doubleday, [1848]) 尖翅翠蛺蝶
♀. JILONG CITY, Nuannuan, 17. X. 2019, reared from *Mangifera indica*, emgd. 11. XII. 2019 (J. F. Shen) (genitalia preparation JYL1006).



582



583



584



585



586. *Euthalia kosempona* Fruhstorfer, 1908 甲仙綠蛺蝶
♀. TAIDONG Co., Yanping, Hongye, 22. IX. 2001 (L. W. Wu) (genitalia preparation JYL988).
587. *Euthalia malapana* Shirôzu & Chung, 1958 馬拉巴翠蛺蝶
♀. TAIZHONG CITY [= TAIZHONG Co.], Heping, Shishanxi, 5. IX. 2003 (J. L. Jan) (genitalia preparation YFH1581).
588. *Euthalia formosana* Fruhstorfer, 1908 臺灣翠蛺蝶
♀. TAOYUAN CITY, Fuxing, Xuanyuan, 2. VII. 2015 (L. Huang) (genitalia preparation JYL790).
589. *Euthalia insulae* Hall, 1930 窄帶翠蛺蝶
♀. YILAN Co., Yuanshan, Fushan Botanical Garden, 800m, 28. VIII. 2007 (Y. F. Hsu) (genitalia preparation JYL987).



586



587



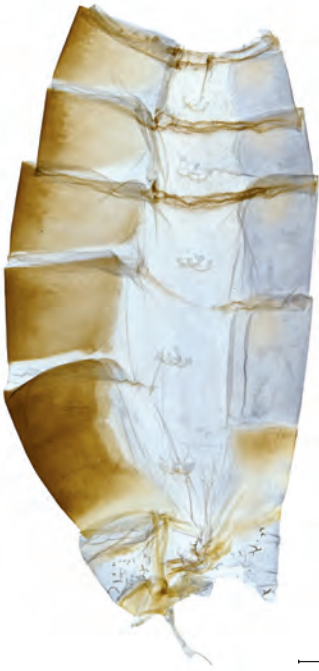
588



589



590. *Dichorragia nesimachus formosanus* Fruhstorfer, 1909 流星蛺蝶
♀. TAIPEI CITY, Neihu, Dagouxi, 30. X. 2018, emgd. 21. XI. 2018 (L. Huang)
(genitalia preparation JYL1046).
591. *Timelaea albescens formosana* Fruhstorfer, 1908 白裳貓蛺蝶
♀. XINBEI CITY [= TAIPEI Co.], Wulai, 1. V. 2010, reared from *Celtis formosana*, HSU 10E06 (J. H. Lin) (genitalia preparation JYL910).
592. *Chitoria chrysolora* (Fruhstorfer, 1908) 金鎧蛺蝶
♀. TAIDONG Co., Donghe, Dulanshan, 1000m, 29. VII. 2021 (J. Y. Liang)
(genitalia preparation JYL970).
593. *Chitoria ulupi arakii* Naritomi, 1959 武鎧蛺蝶
♀. NANTOU Co., Renai, Beidongyanshan, 1500m, 1. IX. 2006 (L. H. Wang)
(genitalia preparation JYL974).



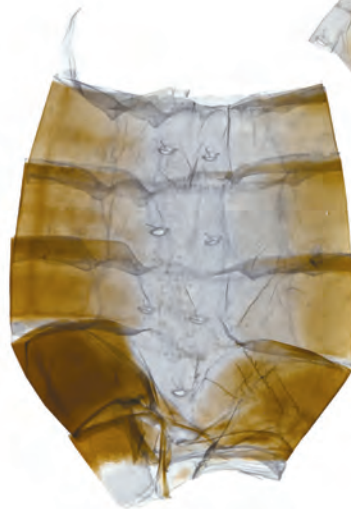
590



591



592



593



594. *Helcyra plesseni* (Fruhstorfer, 1913) 普氏白蛺蝶
♀. KAOHSIUNG CITY, Taoyuan, Meishan, 700m, 8. XI. 2011 (H. C. Huang)
(genitalia preparation JYL1037).
595. *Helcyra superba takamukui* Matsumura, 1919 白蛺蝶
♀. TAIZHONG CITY, Heping, Guguan, Shaolai Trail, 30. IX. 2018 (L. Huang)
(genitalia preparation JYL779).
596. *Sephisa chandra androdamas* Fruhstorfer, 1908 燦蛺蝶
♀. TAIPEI CITY, Beitou, Datunshan, 6. VII. 2016 (L. Huang) (genitalia preparation JYL875).
597. *Sephisa daimio* Matsumura, 1910 臺灣燦蛺蝶
♀. YILAN Co., Datong, Tuleng, 8. VIII. 2018 (L. H. Wang & C. W. Huang)
(genitalia preparation JYL909).



594



595

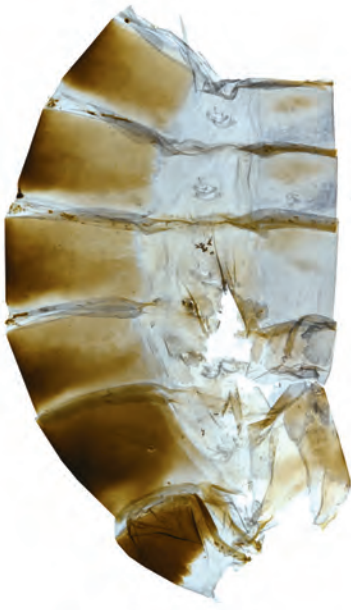


596



597

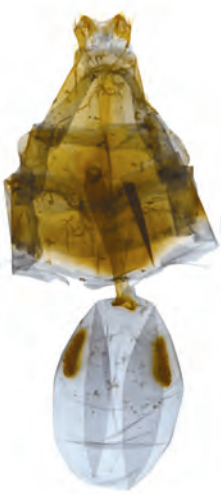
598. *Hestina assimilis formosana* (Moore, 1895) 紅斑脈蛺蝶
♀. TAIPEI CITY, Beitou, Datunshan, 19. VI. 2016 (L. Huang) (genitalia preparation JYL943).
599. *Hestina assimilis assimilis* (Linnaeus, 1758) 紅斑脈蛺蝶
♀. JINMEN Co., Jinhua, Shenshiqiao, 4. XI. 2015 (C. W. Huang) (genitalia preparation JYL796).
600. *Sasakia charonda formosana* Shirôzu, 1963 大紫蛺蝶
♀. TAOYUAN CITY, Fuxing, Northern Cross-Island Highway, 48.5K, 13. VII. 2015 (R. Z. Chang) (genitalia preparation JYL899).
601. *Ariadne ariadne pallidior* (Fruhstorfer, 1899) 波蛺蝶
♀. JINMEN Co., Jinning, Zhongshan Forest, 16. VIII. 2001, reared from *Ricinus communis*, emgd. 14. IX. 2001, HSU 01H20 (Y. T. Lo, L. W. Wu, Y. C. Yang & Y. C. Su) (genitalia preparation JYL1038).



598



599



600

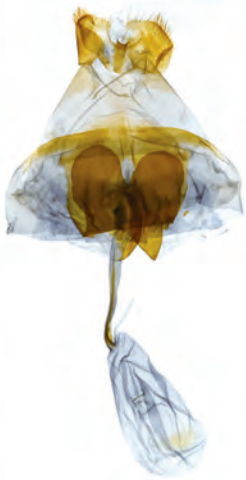


601

602. *Cyrestis thyodamas formosana* Fruhstorfer, 1898 網絲蛺蝶
♀. TAIPEI CITY, Beitou, Datunshan, 31. V. 2016 (H. C. Huang) (genitalia preparation JYL949).
603. *Cyrestis thyodamas chinensis* Martin, 1903 網絲蛺蝶
♀. LIANJIANG Co., Nangan, Tree Nursery, 11. X. 2014 (C. W. Huang & H. Y. Lee) (genitalia preparation JYL1029).
604. *Junonia almana* (Linnaeus, 1758) 眼蛺蝶
♀. TAINAN CITY, Xinhua, Zhiyi Forest Area, 25. XII. 2016 (L. Huang) (genitalia preparation JYL942).
605. *Junonia lemonias aenaria* (Fruhstorfer, 1912) 鱗紋眼蛺蝶
♀. PINGDONG Co., Checheng, Sichongxi, 24. II. 2014 (C. L. Huang) (genitalia preparation JYL804).



602



603



604



605

606. *Junonia orithya* (Linnaeus, 1758) 青眼蛺蝶
♀. MIAOLI Co., Taian, Dabucuo, 12. IV. 2015, emgd. 28. IV. 2015 (H. C. Huang) (genitalia preparation JYL765).
607. *Junonia iphita* (Cramer, [1779]) 黯眼蛺蝶
♀. PINGDONG Co., Chunri, Dahanshan, 2. IX. 2014 (C. L. Huang) (genitalia preparation JYL802).
608. *Junonia atlites* (Linnaeus, 1763) 波紋眼蛺蝶
♀. JINMEN Co., Jinhua, Taiwushan, 14. VIII. 2015, emgd. 7. IX. 2015 (L. Huang) (genitalia preparation JYL799).
609. *Kallima inachus formosana* Fruhstorfer, 1913 枯葉蝶
♀. XINZHU Co., Guanxi, Jinshanxi, 7. XII. 2005 (C. L. Huang) (genitalia preparation JYL769).



606



607



608



609

610. *Yoma sabina podium* Tsukada, 1985 黃帶隱蛺蝶
♀. PINGDONG Co., Shizi, Lilongshan, 500m, 23. VI. 2007, reared from *Ruellia prostrata*, emgd. 27. VII. 2007, HSU 07F40 (C. C. Lu, L. W. Wu & L. H. Wang) (genitalia preparation JYL1049).
611. *Vanessa indica* (Herbst, 1794) 大紅蛺蝶
♀. JILONG CITY, NTOU/Gangziliao, 5. II. 2017, reared from *Boehmeria nivea*, emgd. 16. II. 2017, HSU 17B17 (L. Huang & H. C. Huang) (genitalia preparation JYL958).
612. *Vanessa cardui* (Linnaeus, 1758) 小紅蛺蝶
♀. TAIPEI CITY, Wenshan, Gongguan campus, NTNU, 18. X. 2019, reared from *Artemisia indica*, emgd. 4. XI. 2019, HSU 19K16 (L. Huang) (genitalia preparation JYL997).
613. *Polygonia c-album asakurai* Nakahara, 1920 突尾鉤蛺蝶
♀. XINZHU Co., Jianshi, Lidongshan, 11. VI. 2018, emgd. 23. VI. 2018 (L. Huang) (genitalia preparation JYL967).



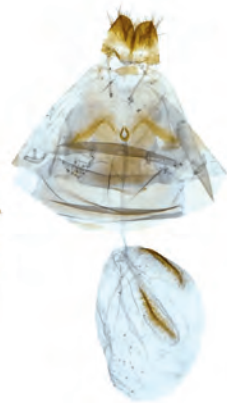
610



611



612



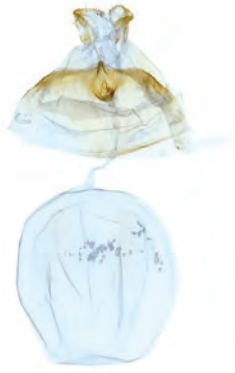
613



614. *Polygonia c-aureum lunulata* Esaki & Nakahara, 1924 黃鉤蛺蝶
♀. TAIPEI CITY, Wenshan, Gongguan campus, NTNU, 27. VI. 2015, emgd. 9.
VII. 2015 (L. Huang) (genitalia preparation JYL762).
615. *Polygonia c-aureum c-aureum* (Linnaeus, 1758) 黃鉤蛺蝶
♀. LIANJIANG Co., Beigan, Tangqi, 21. VII. 2020 (Y. F. Hsu) (genitalia preparation JYL951).
616. *Kaniska canace drilon* (Fruhstorfer, 1908) 琉璃蛺蝶
♀. TAIPEI CITY, Shilin, Pingding Ancient Canal, 1. XII. 2010 (genitalia preparation JYL726).
617. *Kaniska canace canace* (Linnaeus, 1763) 琉璃蛺蝶
♀. LIANJIANG Co., Beigan, Nigushan, 16. IV. 2014, reared from *Simlax china*,
emgd. 8. V. 2014, HSU 14D19 (Y. F. Hsu, H. C. Huang & C. L. Huang) (genitalia preparation JYL956).



614



615



616



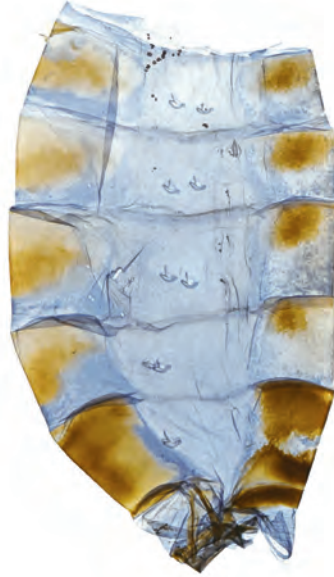
617



618. *Nymphalis xanthomelas formosana* (Matsumura, 1925) 緋蛺蝶
♀. TAOYUAN CITY, Fuxing, Baling, 23. IV. 2017, emgd. 3. V. 2017, HSU 17D60 (L. Huang) (genitalia preparation JYL957).
619. *Symbrenthia lilaea formosanus* Fruhstorfer, 1908 散紋盛蛺蝶
♀. TAIDONG Co., Haiduan, Liyuan, 7. VI. 2020 (Y. F. Hsu) (genitalia preparation JYL1036).
620. *Symbrenthia lilaea lunica* Bascombe, Johnston & Bascombe, 1999 散紋盛蛺蝶 (華南亞種)
♀. TAIPEI CITY, Wenshan, Gongguan campus, NTNU, 21. IV. 2015, emgd. 6. V. 2015 (L. Huang) (genitalia preparation JYL880).
621. *Symbrenthia brabira scatinia* Fruhstorfer, 1908 黃豹盛蛺蝶
♀. TAOYUAN CITY, Fuxing, Xuanyuan, 1000m, 5. IV. 2017 (L. Huang) (genitalia preparation JYL1000).



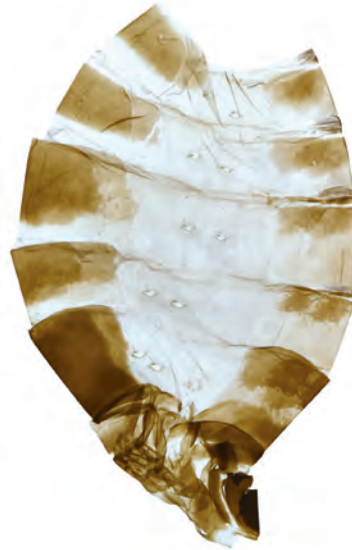
618



619



620



621

622. *Hypolimnas misippus* (Linnaeus, 1764) 雌擬幻蛺蝶
♀. XINBEI CITY, Yingge, 8. VII. 2015, emgd. 4. VIII. 2015 (H. C. Huang)
(genitalia preparation JYL757).
623. *Hypolimnas bolina kezia* (Butler, 1877) 幻蛺蝶
♀. XINBEI CITY, Pinglin, Bihu Temple, 4. VI. 2016 (L. Huang) (genitalia
preparation JYL756).
624. *Hypolimnas anomala truentus* Fruhstorfer, 1912 端紫幻蛺蝶
♀. TAIDONG Co., Lanyu, Central Transverse Road, 19. V. 2021 (Y. F. Hsu)
(genitalia preparation JYL950).
625. *Calinaga formosana* Fruhstorfer, 1908 臺灣絹蛺蝶
♀. XINBEI CITY, Wulai, Fushan, 19. IV. 2017 (L. Huang) (genitalia preparation
JYL999).



622



623



624



625



626. *Charaxes eudamippus formosanus* (Rothschild, 1899) 雙尾蛺蝶
♀. PINGDONG Co., Chunri, Qijia, 350m, 27. VII. 2018 (Y. T. Chung) (genitalia preparation JYL1007).
627. *Charaxes narcaea meghaduta* (Fruhstorfer, 1908) 小雙尾蛺蝶
♀. TAOYUAN CITY, Fuxing, Sanmin, Bianfudong, 29. V. 2016, emgd. 8. VI. 2016 (W. Y. Pan) (genitalia preparation JYL872).
628. *Charaxes bernardus* (Fabricius, 1793) 玉帶螯蛺蝶
♀. LIANJIANG Co., Beigan, Jinsha, 18. XI. 2013, reared from *Cinnamomum camphora*, emgd. 5. I. 2014 (L. H. Wang & H. Y. Lee) (genitalia preparation JYL1048).
629. *Stichophthalma howqua formosana* Fruhstorfer, 1908 箭環蝶
♀. MIAOLI Co., Sanyi, Guandaoshan, 1. VIII. 2020 (L. Huang) (genitalia preparation JYL941).



626



627



628



629

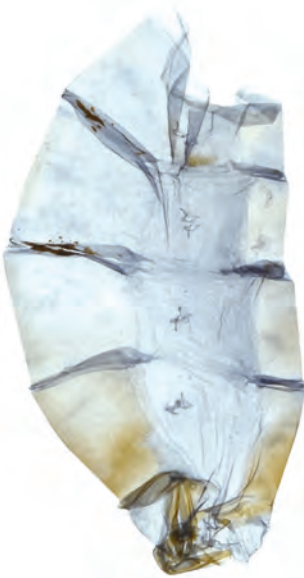
630. *Faunis eumeus* (Drury, 1770) 串珠環蝶
♀. JILONG CITY, Longgang Trail, 25. IV. 2015, emgd. 3. VI. 2015 (H. C. Huang) (genitalia preparation JYL795).
631. *Discophora sondaica tulliana* Stichel, 1905 方環蝶
♀. TAIPEI CITY, Wenshan, Gongguan campus, NTNU, 15. VI. 2015 (L. Huang) (genitalia preparation JYL764).
632. *Ypthima baldus zodina* Fruhstorfer, 1911 小波眼蝶
♀. XINBEI CITY, Ruifang, Sandiaoling, 12. IX. 2015 (L. Huang) (genitalia preparation JYL885).
633. *Ypthima okurai* Okano, 1962 大藏波眼蝶
♀. TAIDONG Co., Haiduan, Wulu Forest Trail, 30. IV. 2019 (L. H. Wang) (genitalia preparation JYL919).



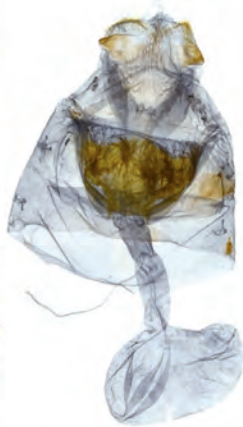
630



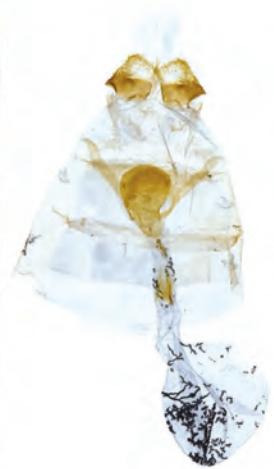
631



632



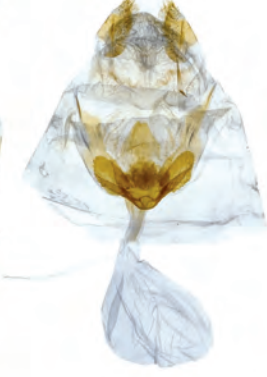
633



634. *Ypthima tappana* Matsumura, 1909 達邦波眼蝶
♀. TAIDONG Co., Beinan, Zhiben Forest Trail, 31. X. 2015 (H. C. Huang)
(genitalia preparation JYL898).
635. *Ypthima atra taiwana* Lamas, 2010 大波眼蝶
♀. TAIPEI CITY, Shilin, Pingding Ancient Canal, 7. IV. 2016 (L. Huang) (genitalia preparation JYL892).
636. *Ypthima yamanakai* Sonan, 1938 白漪波眼蝶
♀. KAOHSIUNG CITY, Taoyuan, Southern Cross-Island Highway, 130K, 3. VII. 2015 (C. W. Huang) (genitalia preparation JYL887).
637. *Ypthima angustipennis* Takahashi, 2000 狹翅波眼蝶
♀. TAIDONG Co., Haiduan, Lidao, 5. VI. 2020 (C. W. Huang) (genitalia preparation JYL917).



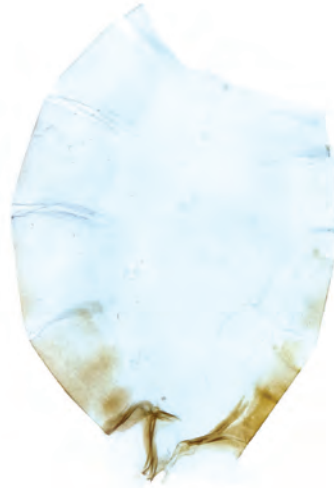
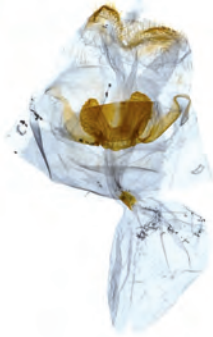
634



635



636



637



638. *Ypthima multistriata* Butler, 1883 密紋波眼蝶
♀. TAIPEI CITY, Neihu, Neigou, 10. II. 2016 (L. Huang) (genitalia preparation JYL895).
639. *Ypthima esakii esakii* Shirôzu, 1960 江崎波眼蝶
♀. NANTOU Co., Renai, Aowanda, 17/18. VIII. 2015, emgd. 30. IX. 2015 (H. C. Huang) (genitalia preparation JYL890).
640. *Ypthima esakii wangi* Lee, 1998 江崎波眼蝶北部亞種
♀. XINBEI CITY, Ruifang, Jiufen, 300m, 4. XI. 2011 (Y. F. Hsu) (genitalia preparation JYL979).
641. *Ypthima akragas* Fruhstorfer, 1911 白帶波眼蝶
♀. NANTOU Co., Renai, Qingjing, 1. VI. 2015 (C. L. Huang) (genitalia preparation JYL883).



638



639



640



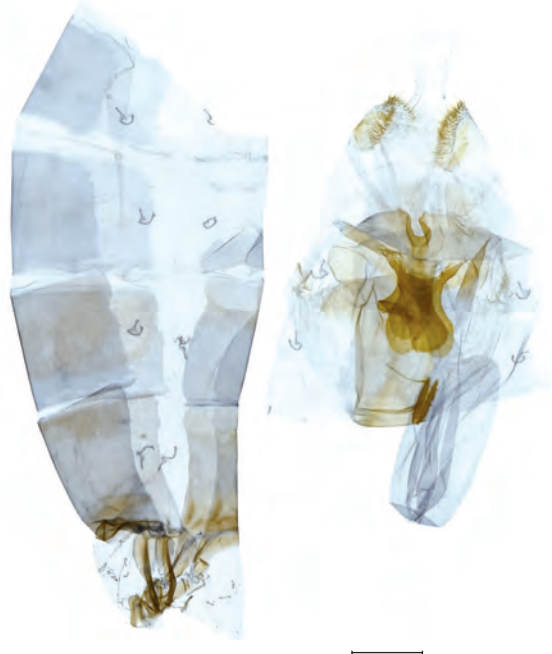
641



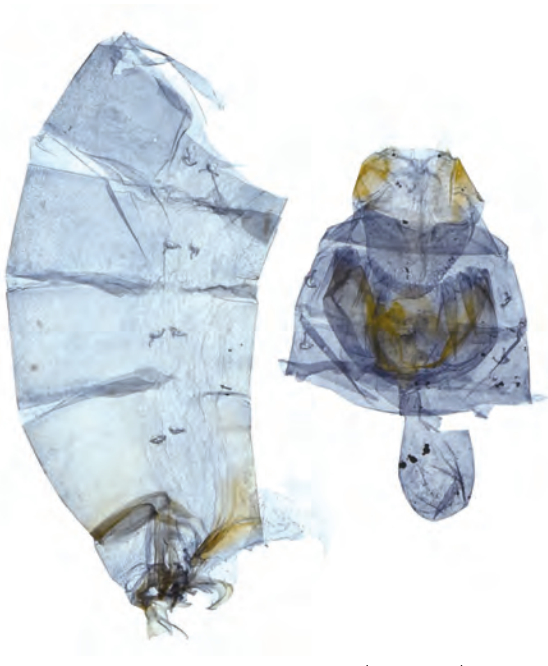
642. *Ypthima praenubila kanonis* Matsumura, 1929 巨波眼蝶 (臺灣北部亞種)
♀. TAIPEI CITY, Beitou, Datunshan, 12. VI. 2016 (H. C. Huang) (genitalia preparation JYL929).
643. *Ypthima praenubila neobilia* Murayama, 1980 巨波眼蝶 (臺灣中南部亞種)
♀. TAIDONG Co., Haiduan, Liyuan, 7/8. VII. 2021 (Z. L. Chen) (genitalia preparation JYL1044).
644. *Ypthima norma norma* Westwood, 1851 罕波眼蝶
♀. LIANJIANG Co., Beigan, Daqiu, 20. IV. 2007 (Y. F. Hsu & H. C. Huang) (genitalia preparation JYL937).
645. *Ypthima wenlungi* Takahashi, 2007 文龍波眼蝶
♀. KAOHSIUNG CITY [= KAOHSIUNG Co.], Taoyuan, Fenggangshan, 1300m, 24. IX. 2007 (Y. F. Hsu & G. P. Su) (genitalia preparation JYL976).



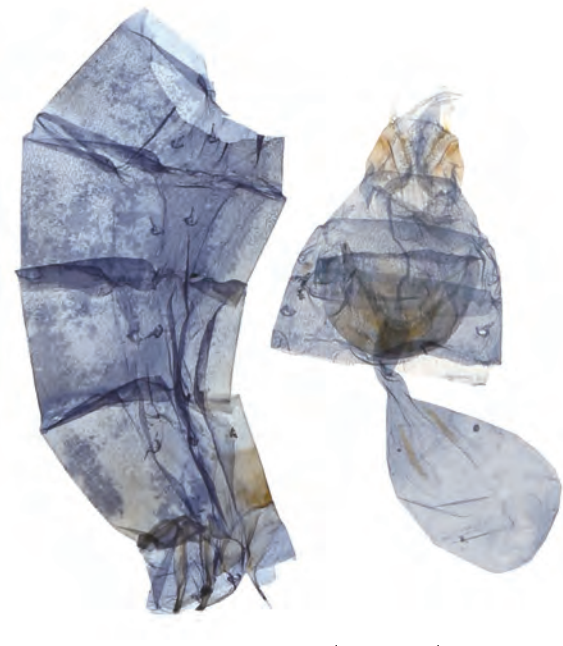
642



643



644



645

646. *Ypthima lisandra* (Cramer, [1780]) 圓翅波眼蝶

♀. JINMEN Co., Jinhu, Jianhua, 20. VI. 2010, reared from *Paspalum conjugatum*, emgd. 24. VII. 2010, HSU 10F29 (C. K. Wang) (genitalia preparation JYL935).

647. *Palaeonympha opalina macrophthalmia* Fruhstorfer, 1911 古眼蝶

♀. TAOYUAN CITY, Fuxing, Ronghua, 9. IV. 2016 (L. Huang) (genitalia preparation JYL862).

648. *Zophoessa dura neoclides* (Fruhstorfer, 1909) 大幽眼蝶

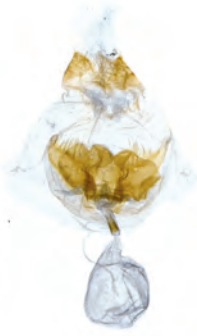
♀. HUALIAN Co., Xiulin, Guanyuan, 2200m, 7. VII. 2006 (L. H. Wang) (genitalia preparation JYL1032).

649. *Zophoessa siderea kanoi* (Esaki & Nomura, 1937) 圓翅幽眼蝶

♀. XINBEI CITY [= TAIPEI Co.], Sanxia, Beichatianshan, 1500/1700m, 7/10. VI. 2001 (Y. T. Lo) (genitalia preparation JYL1017).



646



647



648



649



650. *Zophoessa niitakana* (Matsumura, 1906) 玉山幽眼蝶
♀. NANTOU Co., Renai, Xiaofengkou, 8. VII. 2018 (C. W. Huang) (genitalia preparation JYL915).
651. *Lethe europa pavidata* Fruhstorfer, 1908 長紋黛眼蝶
♀. YUNLIN Co., Douliu, Hushan Dam, 2. XII. 2015 (L. Huang) (genitalia preparation JYL812).
652. *Lethe rohria daemoniaca* Fruhstorfer, 1908 波紋黛眼蝶
♀. TAOYUAN CITY, Fuxing, Baling Ancient Trail, 1. IV. 2015, reared from *Miscanthus sinensis*, HSU 15D01 (L. Huang) (genitalia preparation JYL928).
653. *Lethe verma cintamani* Fruhstorfer, 1909 玉帶黛眼蝶
♀. TAOYUAN CITY, Fuxing, Xuewunao, 7. VI. 2017 (L. Huang) (genitalia preparation JYL983).



650



651



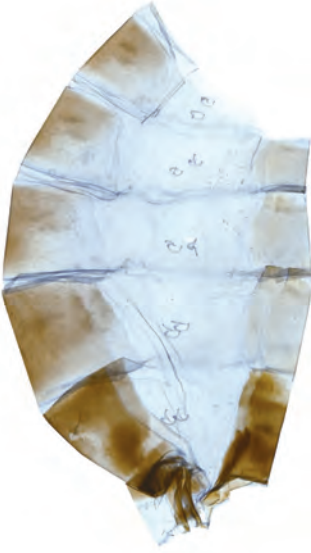
652



653



654. *Lethe hyrانيا formosana* Fruhstorfer, 1908 深山黛眼蝶
♀. TAINAN CITY, Nanxi, Meiling, 26. II. 2017 (C. W. Huang) (genitalia preparation JYL815).
655. *Lethe chandica ratnacri* Fruhstorfer, 1908 曲紋黛眼蝶
♀. YUNLIN Co., Douliu, Hushan Dam, 31. III. 2016 (L. Huang) (genitalia preparation JYL809).
656. *Lethe mataja* Fruhstorfer, 1908 臺灣黛眼蝶
♀. PINGDONG Co., Chunri, Dahanshan, 4. V. 2016, reared from *Miscanthus* sp., emgd. 20. VI. 2016, HSU 16F9 (Y. F. Hsu) (genitalia preparation JYL816).
657. *Lethe christophi hanako* Fruhstorfer, 1908 柯氏黛眼蝶
♀. HUALIAN Co., Xiulin, Guanyuan, 2200m, 7. VII. 2006 (L. H. Wang) (genitalia preparation JYL1019).



654



655



656



657

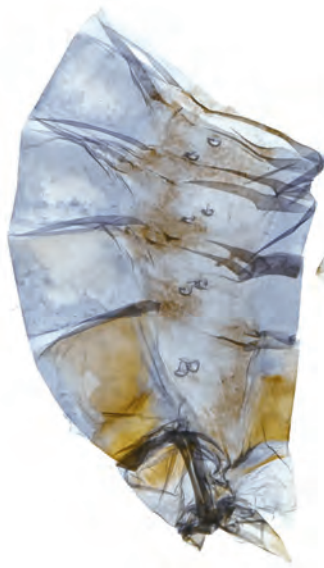
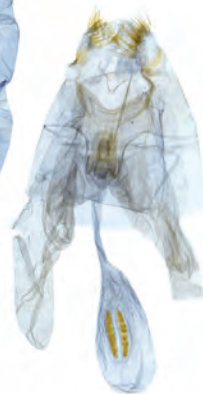
658. *Lethe butleri periscelis* (Fruhstorfer, 1908) 巴氏黛眼蝶
♀. NANTOU Co., Renai, Aowanda, 17. VII. 2018 (L. Huang) (genitalia preparation JYL808).
659. *Lethe gemina zaitha* Fruhstorfer, 1914 孿斑黛眼蝶
♀. NANTOU Co., Renai, Beidongyanshan, 1500m, 28. X. 2006, reared from *Miscanthus sinensis*, emgd. 25. IV. 2007, HSU 06L29 (Y. F. Hsu) (genitalia preparation JYL1023).
660. *Neope pulaha didia* (Fruhstorfer, 1909) 黃斑蔭眼蝶
♀. HUALIAN Co., Xiulin, Guanyuan, 2200m, 12. VII. 2009 (L. H. Wang) (genitalia preparation JYL1039).
661. *Neope bremeri watanabei* Matsumura, 1909 布氏蔭眼蝶
♀. TAOYUAN CITY, Fuxing, Xuewunao, 1430m, 7. VI. 2017 (L. Huang) (genitalia preparation JYL993).



658



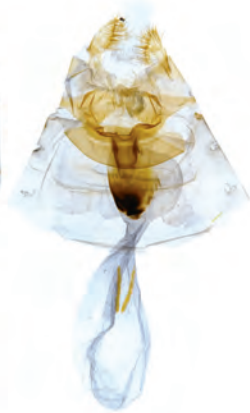
659



660



661



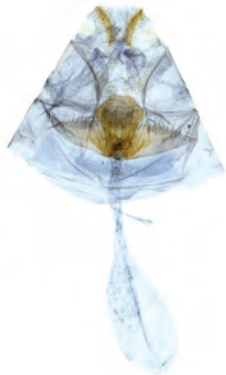
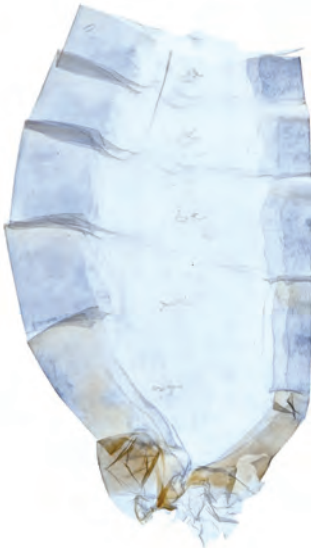
662. *Neope arandii laticolora* (Fruhstorfer, 1908) 白斑蔭眼蝶
♀. HUALIAN Co., Xiulin, Guanyuan, 13. VI. 2018 (C. W. Huang) (genitalia preparation JYL900).
663. *Neope muirheadii nagasawae* Matsumura, 1919 褐翅蔭眼蝶
♀. XINBEI CITY, Sanxia, Wuliao, 23. IX. 2015 (H. C. Huang) (genitalia preparation JYL844).
664. *Mycalesis francisca formosana* Fruhstorfer, 1908 眉眼蝶
♀. NANTOU Co., Xinyi, Heshhe, 5. VII. 2015 (L. Huang) (genitalia preparation JYL833).
665. *Mycalesis gotama nanda* Fruhstorfer, 1908 稻眉眼蝶
♀. YILAN Co., Suao, Houhoukeng, 18. VII. 2016 (L. Huang) (genitalia preparation JYL933).



662



663

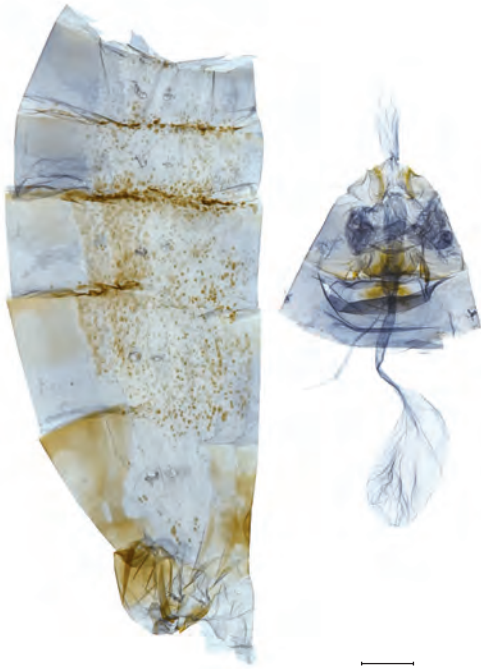


664



665

666. *Mycalesis kagina* Fruhstorfer, 1908 嘉義眉眼蝶
♀. TAINAN Co., Dongshan, Kantoushan, 23. X. 2019, reared from *Zingiber kawagoii*, emgd. 6. XII. 2019 (C. W. Huang & S. Y. Chen) (genitalia preparation JYL930).
667. *Mycalesis perseus blasius* (Fabricius, 1798) 曲斑眉眼蝶
♀. TAINAN CITY, Xinhua, Zhiyi Forest Area, 28. X. 2016 (L. Huang) (genitalia preparation JYL938).
668. *Mycalesis mucianus zonatus* Matsumura, 1909 切翅眉眼蝶
♀. TAINAN CITY, Xinhua, Zhiyi Forest Area, 30. XII. 2016 (L. Huang) (genitalia preparation JYL931).
669. *Mycalesis mineus* (Linnaeus, 1758) 小眉眼蝶
♀. TAINAN CITY, Xinhua, Zhiyi Forest Area, 30. XII. 2016 (L. Huang) (genitalia preparation JYL959).



666



667



668



669

670. *Mycalesis mineus* (Linnaeus, 1758) 小眉眼蝶

♀. JINMEN Co., Jinsha, Ronghu Constructed Wetland, 8. VI. 2014 (C. L. Huang & H. C. Huang) (genitalia preparation JYL961).

671. *Telinga mara* (Fruhstorfer, 1908) 淺色眉眼蝶

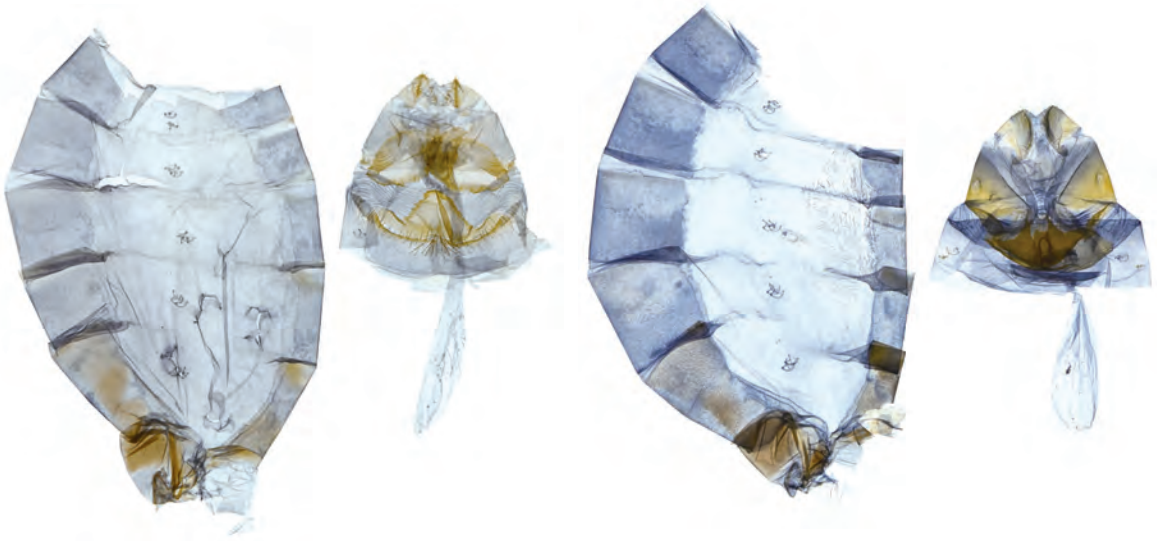
♀. NANTOU Co., Xinyi, Heshu, 5. VII. 2015 (L. Huang) (genitalia preparation JYL836).

672. *Minois nagasawae* (Matsumura, 1906) 永澤蛇眼蝶

♀. HUALIAN Co., Zhuoxi, Dashuikushan, 3. IX. 2008 (C. L. Huang) (genitalia preparation JYL973).

673. *Melanitis leda* (Linnaeus, 1758) 暮眼蝶

♀. MIAOLI Co., Sanyi, 13. IX. 2015 (L. Huang) (genitalia preparation JYL829).



670

671



672

673

674. *Melanitis phedima polishana* Fruhstorfer, 1908 森林暮眼蝶

♀. TAOYUAN CITY, Fuxing, Xuanyuan, 29. VI. 2015 (L. Huang) (genitalia preparation JYL831).

675. *PentHEMA formosanum* (Rothschild, 1898) 臺灣斑眼蝶

♀. TAIZHONG CITY, Heping, Malunshan, 30. X. 2016, reared from *Bambusa* sp., emgd. 15. III. 2017 (H. C. Huang) (genitalia preparation JYL1002).

676. *Elymnia hypermnestra hainana* Moore, 1878 藍紋鋸眼蝶

♀. TAIDONG Co., Beinan, Zhiben Forest Trail, 31. X. 2015 (L. Huang) (genitalia preparation JYL791).



674



675



676

國家圖書館出版品預行編目 (CIP) 資料

臺灣蝶類誌. 第五卷, 蛺蝶科 / 徐堉峰, 梁家源, 黃智偉,
沈宗諭作. -- 初版. -- 臺北市: 農委會林務局, 民 110.12

面; 公分

中英對照

ISBN XXX-XXX-XXXX-XX-X

(精裝) 1. 蝴蝶 2. 臺灣

XXX.XX

00000000

臺灣蝶類誌第五卷蛺蝶科

Butterfly Fauna of Taiwan Volume V Nymphalidae

- 著 者 —— 徐堉峰、梁家源、黃智偉、沈宗諭
發行人 —— 林華慶
總策劃 —— 楊宏志、廖一光、邱立文
策 劃 —— 夏榮生、羅尤娟、許曉華、楊育昌、王守民
出版機關 —— 行政院農業委員會林務局
地 址 —— 100 台北市中正區杭州南路一段 2 號
網 址 —— <http://www.forest.gov.tw/>
電 話 —— +886-2-23515441
設計顧問 —— 陳姿伶
美術設計 —— 伯驊印刷有限公司
印 刷 —— 伯驊印刷有限公司
出版日期 —— 中華民國 110 年 12 月初版一刷
定 價 —— NT\$ 650
展 售 處 —— 國家書店 臺北市松江路 209 號 1 樓 +886-2-25150207
五南文化書局 臺中市山中路 6 號 +886-4-22260330

著作財產權人保留對本書依法享有之所有著作權利。擬重製、改作、編輯或公開口述本書全部或部份內容者，須先徵得著作財產權管理機關之同意或授權。

ISBN 000-000-0000-00-0

GPN 0000000000

